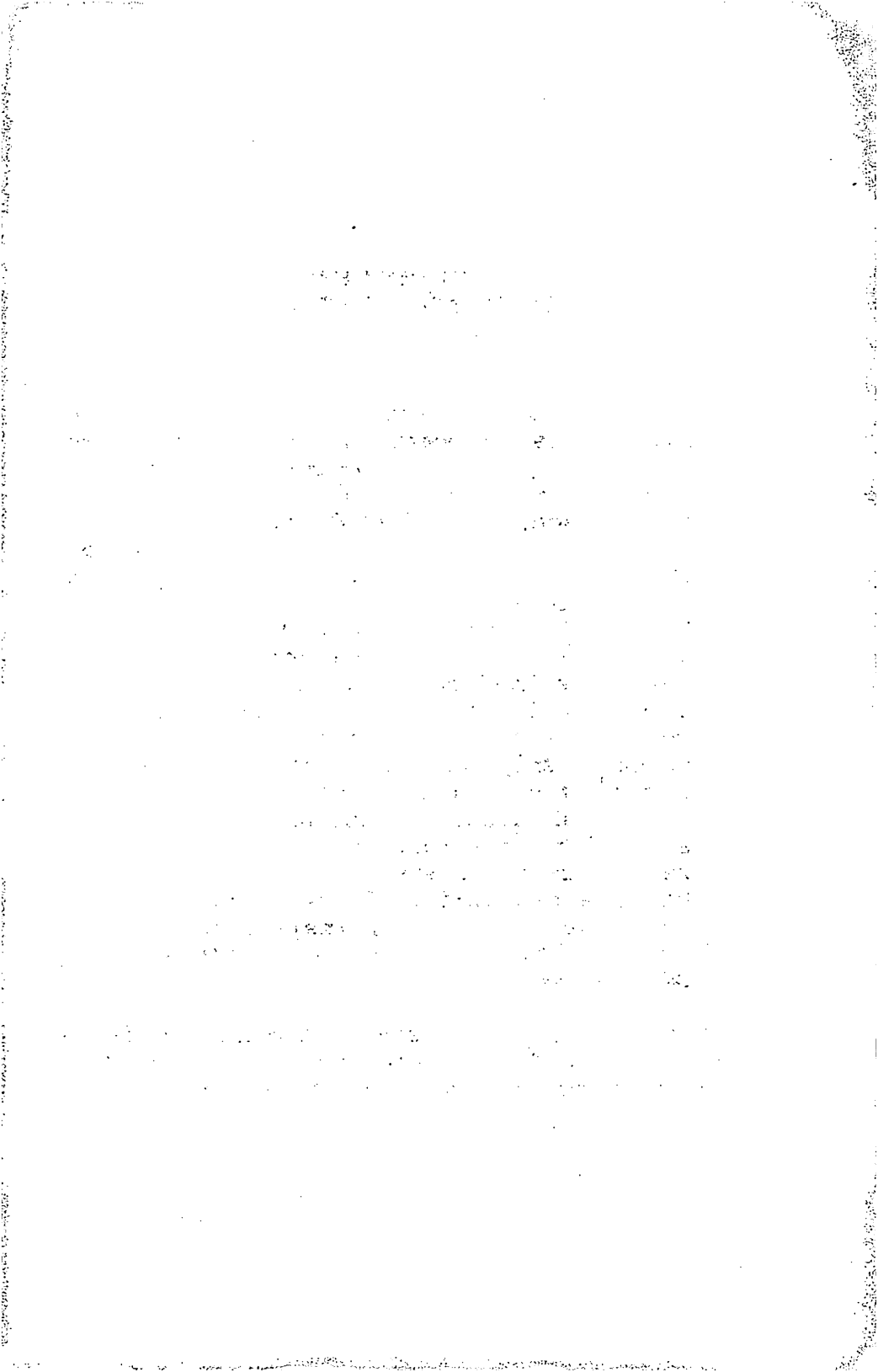


ADDENDUM FOR  
INSTALLATION INSTRUCTIONS  
(Cat. No. 26-5164)

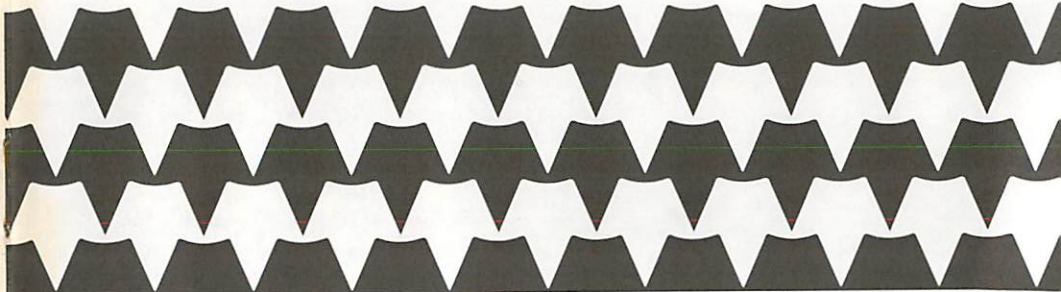
The mounting method for this option board has been improved. Please disregard references to the nylon locking devices. Two #12 X 3/8 screws are supplied for the purpose of securing the option board assembly in place. When installing the assembly, follow all directions given in the installation instruction guide for selecting the proper expansion slot, then proceed as follows:

1. Be sure the assembly is properly aligned in the guide rails and gently slide toward the front of the computer.
2. The assembly will stop when the mating connectors contact each other. At this point a "snap" action should be used to properly seat the connectors. This action should leave the holes at each side of the assembly properly aligned to receive the #12 screws.
3. Using a standard Phillips screwdriver (not the small one), install the two screws to a snug fit. **DO NOT OVERTIGHTEN.**

If later removal of the assembly is necessary, first remove the two #12 screws and then follow the instruction guide for removal of the assembly.



Tandy 2000  
**Serial Expansion Board**  
Installation Instructions



**RADIO SHACK, A DIVISION OF TANDY CORPORATION**

**U.S.A.: FORT WORTH, TEXAS 76102**  
**CANADA: BARRIE, ONTARIO L4M 4W5**

**TANDY CORPORATION**

AUSTRALIA  
91 KURRAJONG AVENUE  
MOUNT DRUITT, N.S.W. 2770

BELGIUM  
PARC INDUSTRIEL  
5140 NANINNE (NAMUR)

U. K.  
BILSTON ROAD WEDNESBURY  
WEST MIDLANDS WS10 7JN

**TANDY®**

## SERVICE POLICY

Radio Shack's nationwide network of service facilities provides quick, convenient, and reliable repair services for all of its computer products, in most instances. Warranty service will be performed in accordance with Radio Shack's Limited Warranty. Non-warranty service will be provided at reasonable parts and labor costs.

Because of the sensitivity of computer products, and the problems which can result from improper servicing, the following limitations also apply to the services offered by Radio Shack:

1. If any of the warranty seals on any Radio Shack and Tandy computer products it sells are broken, Radio Shack reserves the right to refuse to service the product or to void any remaining warranty on the product.
2. If any computer product purchased from Radio Shack has been modified so that it is not within manufacturer's specifications, including, but not limited to, the installation of any non-Radio Shack parts, components, or replacement boards, then Radio Shack reserves the right to refuse to service the product, void any remaining warranty, remove and replace any non-Radio Shack part found in the product, and perform whatever modifications are necessary to return the product to original factory manufacturer's specifications.
3. The cost for the labor and parts required to return the computer product to original manufacturer's specifications will be charged to the customer in addition to the normal repair charge.

Write Control 2

| Bit | Signal Name |                                 |
|-----|-------------|---------------------------------|
| D0  | EXTXCKENA*  | EXternal TXClK ENable Channel A |
| D1  | EXTXCKENB*  | EXternal TXClK ENable Channel B |
| D2  | EXTXCKENC*  | EXternal TXClK ENable Channel C |
| D3  | EXTXCKEND*  | EXternal TXClK ENable Channel D |
| D4  | DMADEVSEL0  | DMA DEvice SElect 0             |
| D5  | Not Used    |                                 |
| D6  | DMACHANEN1  | DMA CHanel ENable 1             |
| D7  | DMACHANEN2  | DMA CHanel ENable 2             |

Write Control 1

| Bit   | Signal Name |                               |
|-------|-------------|-------------------------------|
| D0    | DTRA*       | Data Terminal Ready Channel A |
| D1    | DTRB*       | Data Terminal Ready Channel B |
| D2    | DTRC*       | Data Terminal Ready Channel C |
| D3    | DTRD*       | Data Terminal Ready Channel D |
| D4-D7 | Not Used    |                               |

TERMS AND CONDITIONS OF SALE AND LICENSE OF TANDY COMPUTER EQUIPMENT AND SOFTWARE PURCHASED FROM RADIO SHACK COMPANY-OWNED COMPUTER CENTERS, RETAIL STORES AND RADIO SHACK FRANCHISEES OR DEALERS AT THEIR AUTHORIZED LOCATIONS

**LIMITED WARRANTY**

**I. CUSTOMER OBLIGATIONS**

- A. CUSTOMER assumes full responsibility that this computer hardware purchased (the "Equipment"), and any copies of software included with the Equipment or licensed separately (the "Software") meets the specifications, capacity, capabilities, versatility, and other requirements of CUSTOMER.
- B. CUSTOMER assumes full responsibility for the condition and effectiveness of the operating environment in which the Equipment and Software are to function, and for its installation.

**II. LIMITED WARRANTIES AND CONDITIONS OF SALE**

- A. For a period of ninety (90) calendar days from the date of the Radio Shack sales document received upon purchase of the Equipment, RADIO SHACK warrants to the original CUSTOMER that the Equipment and the medium upon which the Software is stored is free from manufacturing defects. **This warranty is only applicable to purchases of Tandy Equipment by the original customer from Radio Shack company-owned computer centers, retail stores, and Radio Shack franchisees and dealers at their authorized locations.** The warranty is void if the Equipment's case or cabinet has been opened, or if the Equipment or Software has been subjected to improper or abnormal use. If a manufacturing defect is discovered during the stated warranty period, the defective Equipment must be returned to a Radio Shack Computer Center, a Radio Shack retail store, a participating Radio Shack franchisee or a participating Radio Shack dealer for repair, along with a copy of the sales document or lease agreement. The original CUSTOMER'S sole and exclusive remedy in the event of a defect is limited to the correction of the defect by repair, replacement, or refund of the purchase price, at RADIO SHACK'S election and sole expense. RADIO SHACK has no obligation to replace or repair expendable items.
- B. RADIO SHACK makes no warranty as to the design, capability, capacity, or suitability for use of the Software, except as provided in this paragraph. Software is licensed on an "AS IS" basis, without warranty. The original CUSTOMER'S exclusive remedy, in the event of a Software manufacturing defect, is its repair or replacement within thirty (30) calendar days of the date of the Radio Shack sales document received upon license of the Software. The defective Software shall be returned to a Radio Shack Computer Center, a Radio Shack retail store, a participating Radio Shack franchisee or Radio Shack dealer along with the sales document.
- C. Except as provided herein no employee, agent, franchisee, dealer or other person is authorized to give any warranties of any nature on behalf of RADIO SHACK.
- D. **EXCEPT AS PROVIDED HEREIN, RADIO SHACK MAKES NO EXPRESS WARRANTIES, AND ANY IMPLIED WARRANTY OF MERCHANTABILITY OR FITNESS FOR A PARTICULAR PURPOSE IS LIMITED IN ITS DURATION TO THE DURATION OF THE WRITTEN LIMITED WARRANTIES SET FORTH HEREIN.**
- E. Some states do not allow limitations on how long an implied warranty lasts, so the above limitation(s) may not apply to CUSTOMER.

**III. LIMITATION OF LIABILITY**

- A. **EXCEPT AS PROVIDED HEREIN, RADIO SHACK SHALL HAVE NO LIABILITY OR RESPONSIBILITY TO CUSTOMER OR ANY OTHER PERSON OR ENTITY WITH RESPECT TO ANY LIABILITY, LOSS OR DAMAGE CAUSED OR ALLEGED TO BE CAUSED DIRECTLY OR INDIRECTLY BY "EQUIPMENT" OR "SOFTWARE" SOLD, LEASED, LICENSED OR FURNISHED BY RADIO SHACK, INCLUDING, BUT NOT LIMITED TO, ANY INTERRUPTION OF SERVICE, LOSS OF BUSINESS OR ANTICIPATORY PROFITS OR CONSEQUENTIAL DAMAGES RESULTING FROM THE USE OR OPERATION OF THE "EQUIPMENT" OR "SOFTWARE." IN NO EVENT SHALL RADIO SHACK BE LIABLE FOR LOSS OF PROFITS, OR ANY INDIRECT, SPECIAL, OR CONSEQUENTIAL DAMAGES ARISING OUT OF ANY BREACH OF THIS WARRANTY OR IN ANY MANNER ARISING OUT OF OR CONNECTED WITH THE SALE, LEASE, LICENSE, USE OR ANTICIPATED USE OF THE "EQUIPMENT" OR "SOFTWARE."** NOTWITHSTANDING THE ABOVE LIMITATIONS AND WARRANTIES, RADIO SHACK'S LIABILITY HEREUNDER FOR DAMAGES INCURRED BY CUSTOMER OR OTHERS SHALL NOT EXCEED THE AMOUNT PAID BY CUSTOMER FOR THE PARTICULAR "EQUIPMENT" OR "SOFTWARE" INVOLVED.
- B. RADIO SHACK shall not be liable for any damages caused by delay in delivering or furnishing Equipment and/or Software.
- C. No action arising out of any claimed breach of this Warranty or transactions under this Warranty may be brought more than two (2) years after the cause of action has accrued or more than four (4) years after the date of the Radio Shack sales document for the Equipment or Software, whichever first occurs.
- D. Some states do not allow the limitation or exclusion of incidental or consequential damages, so the above limitation(s) or exclusion(s) may not apply to CUSTOMER.

**IV. SOFTWARE LICENSE**

- RADIO SHACK grants to CUSTOMER a non-exclusive, paid-up license to use the TANDY Software on one computer, subject to the following provisions:
- A. Except as otherwise provided in this Software License, applicable copyright laws shall apply to the Software.
  - B. Title to the medium on which the Software is recorded (cassette and/or diskette) or stored (ROM) is transferred to CUSTOMER, but not title to the Software.
  - C. CUSTOMER may use Software on one host computer and access that Software through one or more terminals if the Software permits this function.
  - D. CUSTOMER shall not use, make, manufacture, or reproduce copies of Software except for use on one computer and as is specifically provided in this Software License. Customer is expressly prohibited from disassembling the Software.
  - E. CUSTOMER is permitted to make additional copies of the Software **only** for backup or archival purposes or if additional copies are required in the operation of one computer with the Software, but only to the extent the Software allows a backup copy to be made. However, for TRSDOS Software, CUSTOMER is permitted to make a limited number of additional copies for CUSTOMER'S own use.
  - F. CUSTOMER may resell or distribute unmodified copies of the Software provided CUSTOMER has purchased one copy of the Software for each one sold or distributed. The provisions of this Software License shall also be applicable to third parties receiving copies of the Software from CUSTOMER.
  - G. All copyright notices shall be retained on all copies of the Software.

**V. APPLICABILITY OF WARRANTY**

- A. The terms and conditions of this Warranty are applicable as between RADIO SHACK and CUSTOMER to either a sale of the Equipment and/or Software License to CUSTOMER or to a transaction whereby Radio Shack sells or conveys such Equipment to a third party for lease to CUSTOMER.
- B. The limitations of liability and Warranty provisions herein shall inure to the benefit of RADIO SHACK, the author, owner and licensor of the Software and any manufacturer of the Equipment sold by Radio Shack.

**VI. STATE LAW RIGHTS**

The warranties granted herein give the **original** CUSTOMER specific legal rights, and the **original** CUSTOMER may have other rights which vary from state to state.

## Port and Register Definitions

The addresses and programming information for the input/output ports on the serial board and the addresses for the SCC registers are listed below. For SCC programming information, see the AMD programming manual.

### Board Number

| 1    | 2    |                              |
|------|------|------------------------------|
| 82C0 | 82D8 | Read Status 2 (read only)    |
| 82C2 | 82DA | Read Status 1 (read only)    |
| 82C4 | 82DC | Write Control 2 (write only) |
| 82C6 | 82DE | Write Control 1 (write only) |
| 82C8 | 82E0 | SCC1-Channel B Control       |
| 82CA | 82E2 | SCC1-Channel B Data          |
| 82CC | 82E2 | SCC1-Channel A Control       |
| 82CE | 82E6 | SCC1-Channel A Data          |
| 82D0 | 82E8 | SCC2-Channel B Control       |
| 82D2 | 82E8 | SCC2-Channel B Data          |
| 82D4 | 82EC | SCC2-Channel A Control       |
| 82D6 | 82EE | SCC2-Channel A Data          |

### Read Status 2

| Bit   | Signal Name     |   |
|-------|-----------------|---|
| D0    | Board 1 - INT 1 | The status of the interrupt depends on jumper options J29 and J30 |
| D1    | Board 1 - INT 2 |   |
| D2    | Board 2 - INT 1 |   |
| D3    | Board 2 - INT 2 |   |
| D4-D7 | Not Used        |   |

### Read Status 1

| Bit | Signal Name |                          |
|-----|-------------|--------------------------|
| D0  | RIA*        | Ring Indicator Channel A |
| D1  | RIB*        | Ring Indicator Channel B |
| D2  | RIC*        | Ring Indicator Channel C |
| D3  | RID*        | Ring Indicator Channel D |
| D4  | DSRA*       | Data Set Ready Channel A |
| D5  | DSRB*       | Data Set Ready Channel B |
| D6  | DSRC*       | Data Set Ready Channel C |
| D7  | DSRD*       | Data Set Ready Channel D |

The 4 channels on this board (A, B, C, D) connect to devices through a DB-25. The pinouts of the DB-25 are listed below:

| Pin Number | Sig-DTE | Sig-DCE |
|------------|---------|---------|
| 1          | GND     | GND     |
| 2          | TXD     | RXD     |
| 3          | RXD     | TXD     |
| 4          | RTS     | CTS     |
| 5          | CTS     | RTS     |
| 8          | DCD     | DTR     |
| 20         | DTR     | DCD     |
| 6          | DSR     | DSR     |
| 7          | GND     | GND     |
| 15         | EX CLK  | EX CLK  |
| 17         | EX CLK  | EX CLK  |
| 22         | RI      | RI      |
| 24         | CLK OUT | CLK OUT |

The selection of DTE versus DCE is done with jumper plugs for each channel. With all six jumper plugs in the 1-2 position, the channel is configured for DTE operation. In the 2-3 position, the channel is configured for DCE operation.

## Installation

Thank you for purchasing the Tandy 2000 Serial Expansion Board. If this is your second board, some modifications will be necessary to the Main Logic Board; therefore, the second Serial Expansion Board **MUST** be installed by the service technicians at your Radio Shack Service Center.

1. **Warning: Turn off all equipment.** If it is on, you could damage the central processing unit, as well as the option board.
2. To avoid possible static charge buildup, touch a metal object to ground yourself before you begin.
3. If you have a monochrome Graphics Option board (Catalog #26-5140), do not install the expansion board in the lowest slot. The graphics board must go there. If you have a Hard Disk Controller board (Catalog #26-5125), do not install the expansion board in the top slot. After selecting a slot, "unlock" the panel covering it. Do this by pulling the buttons on either side of the panel. (See Figure 1. Do not try to remove the buttons.) Remove the panel.

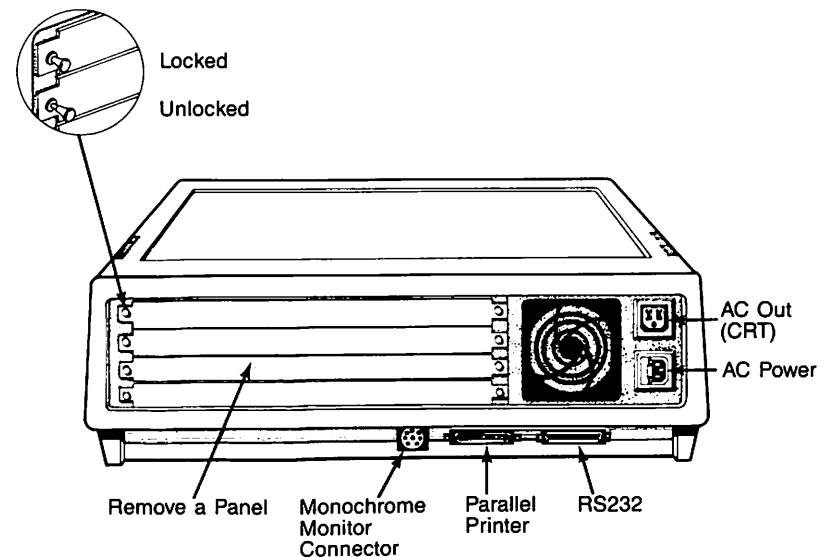
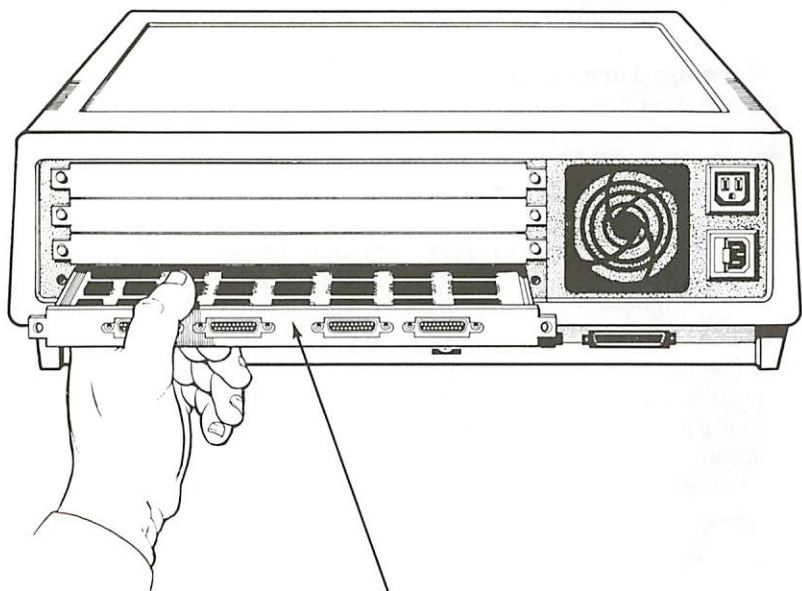


Figure 1

4. Unlock the buttons on the Serial Expansion Board's panel. (Note: Handle the pan containing the board, **not** the board itself.) Slowly slide the pan between the guides along the sides of the card slot until the board meets the connector. (See Figure 2.)



Serial Expansion Board  
Figure 2

5. Then apply steady, equal pressure to both edges of the panel (near the buttons) to push the pan all the way in and "seat" the connector. Push the buttons in to lock the board into position.

The Tandy 2000 Serial Expansion Board has many user selectable options. The next few pages will describe these options. If you have any questions concerning these, please contact your nearest Radio Shack Service Center.

## Serial Communications Chip

**Data Lines**—The internal 8-bit data bus connects directly to the data lines of the SCC.

**Control Lines**—IORD\*, IOWR\*, RESET\*, CE1\*, and CE2\* connect to a PAL (U28). The C1RD\*, C1WR\*, C2RD\*, and C2WR\* outputs are tied to the respective read and write inputs on SCC1 and SCC2. Addresses A1 and A2 drive the D/C\* and A/B\* inputs. CE1\* and CE2\* connect to CE\* on its respective SCC. The vectored interrupts feature is not used, so IEI, IEO, and INTNAK\* are ignored. The INT\* output is pulled up and fed to a LS08.

**DMA Control Lines**—The W/REQ\* outputs are fed to the LS153 as receive requests and the DTR/REQ\* outputs as transmit requests.

**Clocks**—The 8 MHz input from the bus is divided by two and fed to the PCLK (Peripheral Clock) input.

**Channel Data and Control**—The TXD, RXD, RTS\*, CTS\* and DCD\* lines connect through 1488 and 1489 (E1A buffers) to the channel input/output connector.

**Channel Clocks**—The RXC and TXC connect through 1488 and 1489 (E1A buffers to the channel input/output connector).

### Jumper Options

|         |  |
|---------|--|
| E1-E2   | Enables DMA TX requests to bus.<br>(Channels A and B only)   |
| E3-E4   | Enables DMA RX requests to bus.<br>(Channels A and B only)   |
| E5-E6   | Selects board as first board in system.  |
| E6-E7   | Selects board as second board in system.   |
| E8-E9   | High active BUSINT03.  |
| E8-E10  | Low active BUSINT03.   |
| J5-J28  | Jumper channel for DTE or DCE.<br>Jumper 1-2 for DCE<br>Jumper 2-3 for DTE   |
| J29-J30 | Selects Data bits that Interrupt Status will appear on:<br>J29 & J30 1 to 2 for the first board<br>J29 & J30 2 to 3 for the second board |