

3D REVELATOR

Quick Start



ELSA

THE GLASSES FOR TRUE DEPTH OF VISION

You've already made your purchase decision, so it's too late now—you're already convinced that you bought the right product. It doesn't matter who convinced you, they were right!

We can only attempt to describe the *ELSA 3D REVELATOR* experience on paper. Instead, we'd like to concentrate on giving you effective guidelines to help you install and set up the glasses correctly as quickly as possible. Everything else can be found in the online help. The hardware installation is straightforward. You should devote a bit of attention to setting the software up correctly, however.



In some individuals, flash effects may trigger epileptic seizures or sensory disturbances. Please consult your physician before using the 3D REVELATOR in the event that you've experienced similar problems in the past. Should you experience queasiness, involuntary muscle contractions or cramps while using the glasses, take them off immediately.

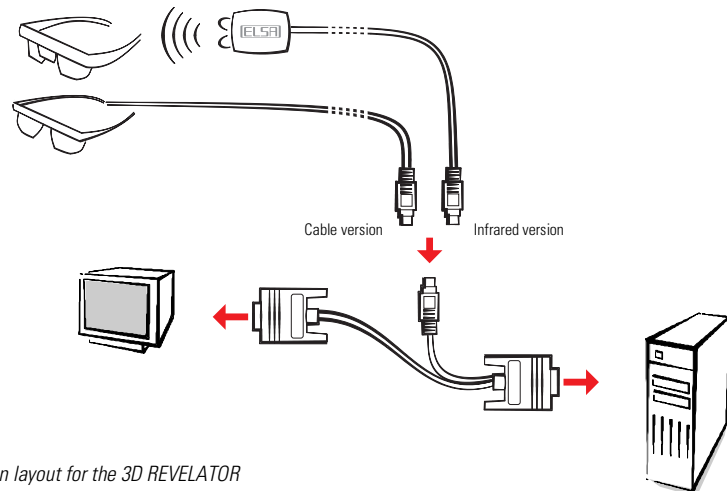
ESSENTIAL HARDWARE AND SOFTWARE

- An *ELSA ERAZOR II*, an *ELSA ERAZOR III*, an *ELSA VICTORY II* or an *ELSA WINNER II* and other graphics cards* with the TNT or TNT2 chip from NVIDIA.
- A monitor capable of refresh rates of at least 100 – 140Hz.
- Any 3D game that uses Direct3D and delivers valid Z data—nearly all current games are suitable.
- Windows 95 or Windows 98 with DirectX from Version 6.0!

* Also tested are the Diamond Viper V550, Viper 770 Ultra and Creative Labs Graphics Blaster TNT, TNT2 Ultra. Problem-free functionality with other graphics boards cannot be guaranteed. This driver is based on the latest NVIDIA ULTRA DETONATOR drivers and includes all the latest NVIDIA utilities. This replaces the manufacturer's own supplied drivers and utilities. Special functions such as TV out may no longer be available!

CONNECTIONS TO THE COMPUTER

A connection adapter for the *ELSA 3D REVELATOR* glasses and monitor is included, as well as a CD containing the *ELSA 3D REVELATOR* software. For the infrared version, connect the plug of the transmitter module to the socket on the adapter; plug the cable version directly into the adapter.



Connection layout for the 3D REVELATOR

CONNECTIONS TO THE SYSTEM

In addition to the hardware requirements described above, ensure that the drivers for your graphics board and the *3D REVELATOR* are installed.

Insert the included CD in your CD-ROM drive. If the ELSA setup does not start automatically, run SETUP in the root folder of the CD. The rest almost takes care of itself—the ELSA setup will guide you through the installation step by step.

FOUR STEPS FOR FAST RESULTS

Now that the glasses are connected and the drivers are installed, we bet that you're already dying of impatience. Here—in a nutshell—is how to continue:

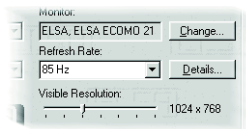
If you are using an ELSA graphics card, you must select your monitor model in the Windows Display Properties and increase the refresh rate. If your monitor is not listed in the Windows database, you should request the monitor manufacturer to provide the installation file (INF file) for your monitor.

1

Is your monitor known?

This step is only required if your monitor isn't registered under Windows! If you are using an ELSA graphics board, then the driver software helps you to enter the monitor information.

Windows needs to "know" your monitor before it can set a high refresh rate. All common manufacturers and monitor types are already contained in the Windows data-



base. Here's how to check whether your monitor is registered under Windows:

- WIN95: Start
Settings ► Control Panel ► Display ► Settings
- WIN98: Start
Settings ► Control Panel ► Display ► Settings ► Advanced... ► Settings

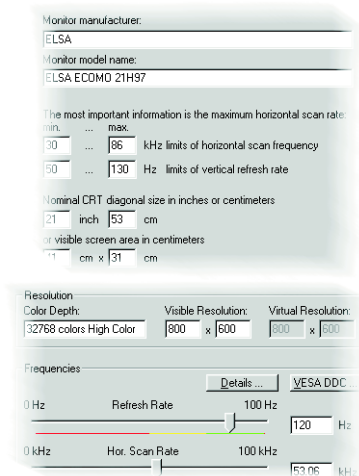
If your monitor hasn't been specified and isn't listed in the Windows database, your monitor handbook and the ELSA graphics driver will help you to make the entries yourself. Be sure to enter the monitor specifications correctly, otherwise you may damage your monitor!

In the ' Settings' dialog box, click **Change...**, and enter the horizontal and vertical values, as well as the diagonal size of your monitor, as stated in the monitor manual.

2

Increasing the refresh rate

Go to the settings of the graphics board and select a resolution that permits a refresh rate of at least 100Hz (or better 120Hz). It's possible to enter the resolution into the dialog box directly—e.g. 800x600—and use the slider to check the maximum refresh rate your monitor



is capable of displaying. Perform this step for every resolution that you would like to use later with Direct3D. Windows will retain these settings.

■ WIN95: Start
Settings ► Control Panel ► Display ► Settings ► Details

■ WIN98: Start
Settings ► Control Panel ► Display ► Settings ► Advanced... ► Settings ► Details

3

Enabling the stereo driver

Next, activate the stereo driver. You can then enable and disable the driver with the '-' hotkey on the numeric keypad.

■ WIN9x: Start
Settings ► Control Panel ► Display ► Stereo



4

Game start!

Put on the glasses! Go for it!

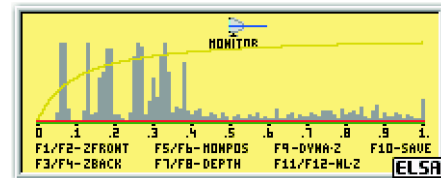
Some games must first be switched to Direct3D. You can check this in the Options of the game.

**SEEING CORRECTLY**

The Windows help file under ' Stereo' covers the possible settings in detail, so let's concentrate on the in-game control panel. As soon as you've activated the stereo effect and started a game, you can call up the in-game control panel with the * key on the numeric keypad.

Note: The function keys of the game are disabled as long as the in-game control panel is active.

The control panel histogram illustrates the distribution of Z values in the scene. The relative position of the monitor and viewing plane are also symbolized.



- Reduce the minimum Z value
- Increase the minimum Z value
- Reduce the maximum Z value
- Increase the maximum Z value
- Move scene out from the monitor
- Move scene in towards the monitor

- Reduce the stereo width
- Increase the stereo width
- Enable and disable Dyna-Z™
- Save the current settings for the game
- Reduce nonlinear Z-mapping factor
- Increase nonlinear Z-mapping factor

As a general rule, don't hesitate to experiment with the settings! Check the values in the stereo-width calculator and adapt them as required. Manipulate the values using the function keys in the control panel and observe the effects.

THE 3D REVELATOR SUITE

After the installation you will find a new symbol in the task bar of Windows. Behind this symbol there is the *3D REVELATOR Suite*, which you can open with one mouse-click. All the important functions are deposited here centrally and can be easily adjusted.



With the driver switch function of the 3D REVELATOR Suite you can switch between the original drivers and tools for the installed graphics card, and the 3D REVELATOR drivers. After switching Windows must be started again.

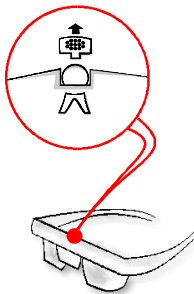
FOR CORDLESS USERS ONLY:

Just above the nose pads of the infrared model, you'll find a cover plate for the battery compartment of the *3D REVELATOR*. Two CR2032 batteries will be required if you ever need to replace them. Please note that when inserting that the plus pole of the battery must point to the cover plate.

Remember: be sure to dispose of the old batteries correctly. Batteries do not belong in your regular household trash.



When taking the infrared version of the 3D REVELATOR off briefly or setting it aside for longer periods of time, don't forget to fold up at least the right-hand earpiece. The on/off switch of the glasses is linked to the hinge mechanism. The glasses are ready to receive in their open state and are thus drawing power from the batteries.



OPERATING NOTICE

You think everything should be working by now, but you are having problems? The causes arise mostly from the system environment or even from certain input devices. For example, connect the glasses before starting the operating system and make sure that the power-saving mode for your monitor is switched off. Also make sure that the vertical synchronization (V-sync) for your graphics board is activated.



With the infrared version of the 3D REVELATOR, interference can be created by the special wave characteristic of fluorescent tubes and the Infrared transfer can be disturbed. In such case you should alter the lighting environment.

You can find responses to most questions in the FAQs on the *3D REVELATOR* CD. Just start the Setup program, click on the button **Support** and choose **FAQs**.

Or visit ELSA on the Internet at www.elsa.com. Our Support pages has an area where frequently asked questions (FAQs) are covered in detail and many useful tips can be found.

HOW TO CONTACT ELSA

Support-Hotline	+44-171294 0114
Internet	www.3drevelator.com/support