

Welcome!

The latest Microtek scanners are equipped with smart-buttons for easier access to scanner functions. Scanners with the smart-buttons have these configurations:

- 3 one-touch buttons: Scan, Copy, and E-mail.
- 5 one-touch buttons: Scan, Copy, E-mail, OCR, and Scan-to-Web or Scan, Copy, E-mail, Setup, and Cancel.
- 7 one-touch buttons: Cancel/Setup, Scan, Copy, E-mail, OCR, Scan-to-Web, and Custom.

Microtek scanners assist users by simplifying scanning tasks and increasing productivity with just the touch of a button. These "smart buttons" provide an intuitive and easy method to quickly and easily scan images.

For example, to copy a stack of documents, simply place the first page on the scanner bed, and press the **Copy** button. Once the first page has been scanned, place the next page and press the **Copy** button again. The scanner will work like a copier with your printer, printing the documents one after another with no interruption.


The parameters for each button can be defined through the [Microtek Scanner Configuration \(MSC\) utility](#). When you have completed specifying your scan setting requirements, you can then perform several tasks continuously with just a simple touch.

[Launching and exiting the Microtek Scanner Configuration \(MSC\) utility](#)


[How the scanner buttons work](#)

Launching and Exiting the MSC utility

Launch your Microtek Scanner Configuration (MSC) utility by:

- Double-clicking the Microtek Scanner Configuration (MSC) icon  from the desktop.
- Pressing the Cancel/Setup button on your scanner (if your scanner is not working).

To exit the Microtek Scanner Configuration (MSC) utility:

- Click the Exit  button located at the top-right corner (OK button on the bottom-right corner for the Mac) of the Microtek Scanner Configuration (MSC) panel.

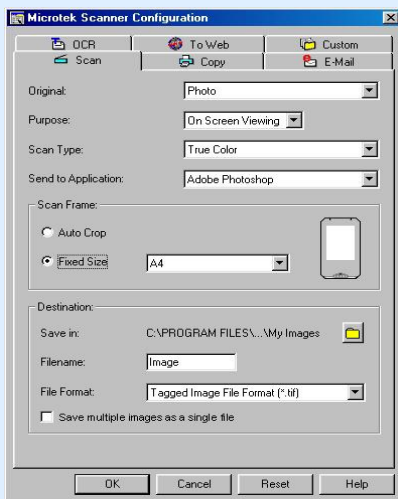
[Using the Microtek Scanner Configuration \(MSC\) utility](#)

Using the MSC utility

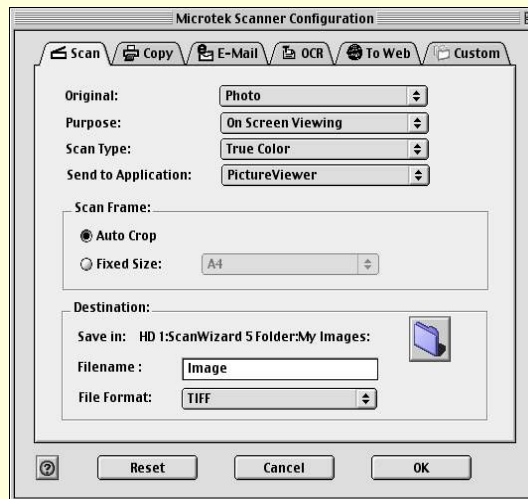
When you launch the MSC, the **Microtek Scanner Configuration (MSC)** panel appears. Depending on the scanner model you are using, you will see 3 tabs ([Scan](#), [Copy](#) or [E-mail](#)), 5 tabs ([Scan](#), [Copy](#), [E-mail](#), [OCR](#), or [To Web](#)), or 6 tabs ([Scan](#), [Copy](#), [E-mail](#), [OCR](#), [To Web](#), or [Custom](#)). Click any of the tabs to view or customize the button settings according to your specific requirements.

Click either of the thumbnails below to get a closer view of the Microtek Scanner Configuration (MSC) panel.

Windows



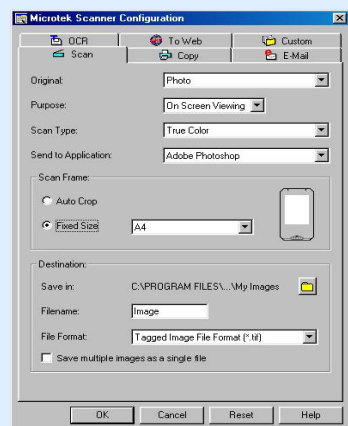
Macintosh



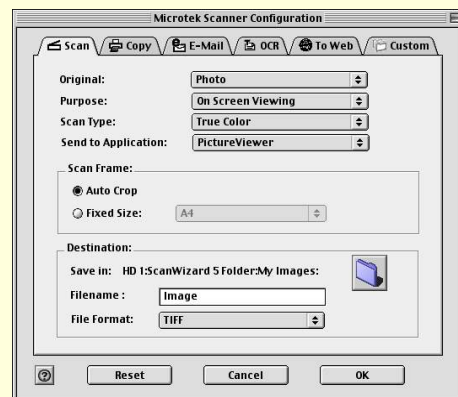
Customizing the Scan panel

To obtain a larger view of the Scan panel, click either of the thumbnails below:

Windows



Macintosh



Select the topic you wish to view from the links below:

[Original](#)

[Purpose](#)

[Scan Type](#)

[Send to Application](#)

[Scan Frame](#)

[Destination](#)

[OK button](#)

[Cancel button](#)

[Reset button](#)

[Help button](#)

Original

Defines the type of your scan material. To scan printed matter (e.g., newspapers, art books, flyers, or magazines), choose Magazine. To scan graphics, choose Illustration.

Purpose

Defines the destination of the scanner output. For viewing purposes alone, choose On Screen Viewing. Choose Custom if you want to set a specific resolution. It is recommended that the resolution not be set higher than the scanner's optical resolution.

Scan Type

Defines the color output for your document. Make sure you choose the correct image type; it is always best to choose the right image type. For instance, if you choose True Color to scan a gray-level image, a bigger file size and longer scanning time results with little improvement to image quality. Likewise, if your original is text only without images, choose Black & White to achieve better quality than Gray.

Some scanner models support JPEG output color format. Take note that for JPEG image format, the better the image quality, the greater the disk space required. If your Microtek scanner does not support the JPEG format, the JPEG selections will not appear under Scan Type.

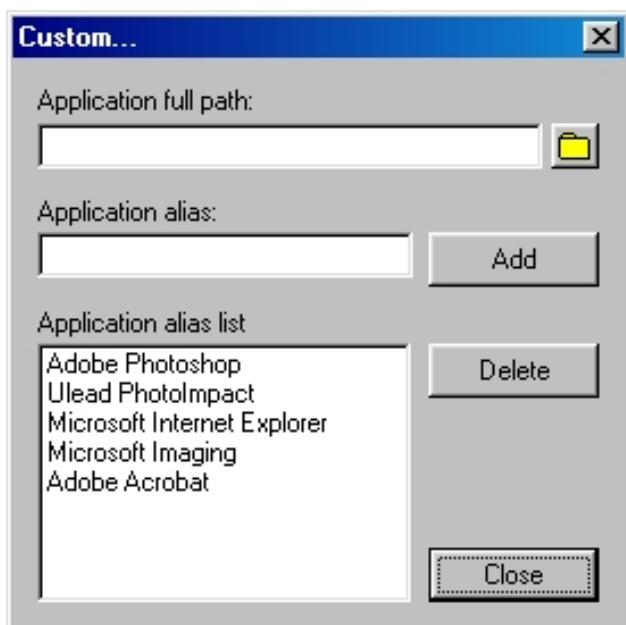
Send to Application

Defines the application that will edit and save the scanned image; the application can be an image editor, web browser, or Acrobat program available on your disk.

If the application you prefer to use is not shown on the list yet, add it to the list by –

For Windows users:

Choose Custom from the bottom of the list. Use the resulting dialog box to search and add the new application to the list.



Application full path: Enter the full path name, or click the yellow folder icon to browse and search for the new application.

Application alias: Enter an alias for the application to be added.

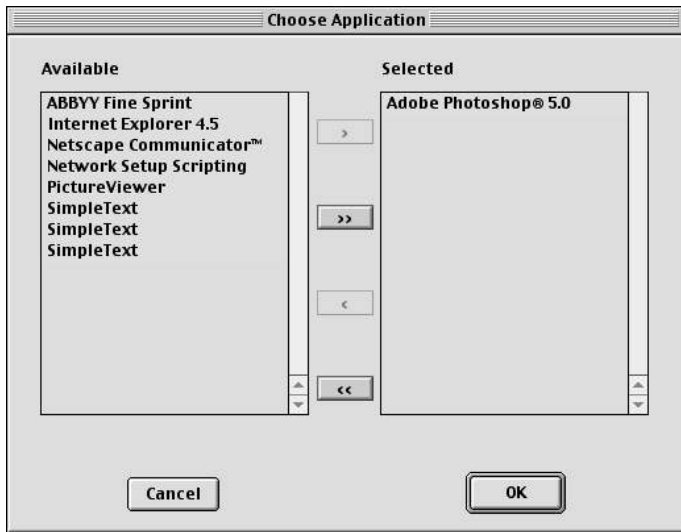
Add: When you have located your new application, click Add to include the new application to the Application alias list. Then click Close.

Delete: If you want to remove an existing application from the Application alias list,

select the application, then click Delete.

For Macintosh users:

Choose Custom from the bottom of the list to bring up "Choose Application" window. The MSC utility starts to search for the available software programs in your disk and displays them on the left panel of the window.



> **or** >> : Select and Add a particular software or all the available software from the "Available" panel to the "Selected" panel.

< **or** << : Select and Delete a particular software or all the software from the "Selected" panel to the "Available" panel.

When you are done with your software selection. click OK to update the changes made, or Cancel to abandon the selection you've just made.

Scan Frame

Select either Auto Crop or Fixed Size.

Auto Crop: If Auto Crop is selected, the scanner first executes a preview, tries to determine the size of the original image, then performs the scan and crops the full scan frame to fit the image automatically.

Fixed Size: If Fixed Sized is selected, the Auto Crop function is disabled and instead, you select the image size from the list. When a scan is performed, the selected scan frame size is framed on the top-center of the glass bed. Thus, it is the important that you position the original on the top-center of the glass bed. A centering marker is provided on the top ruler to guide you with alignment.

Thumbnail of the Scan frame: Shows the selected scan frame. If Auto Crop is selected, the selected scan frame of the thumbnail is disabled.

Destination

Defines the folder for saving and storing the scanned images.

Save in: Saves the image to the current folder destination. To change the folder location, click the folder icon at the right end of the existing path.

Filename: Refers to the prefix or root name in a series of filenames. By default, the root filename is "Image". If the TIFF file format is selected, the scanned images will be automatically identified as "Image001.tif", "Image002.tif", etc. You can change the default root filename to uniquely label your scan jobs.

File Format: PDF is the default image file format.

Save multiple images as a single file: Allows you to save the scanned images into a single file. You can enable this option if the scan frame is "Fixed Size" and the output image file format is DCX, PDF, or TIF. When enabled, MSC will prompt you to place the next page as you scan from the scanner bed, then click the Continue button to scan; or click the Close button to save multiple images as a single file. If you scan through ADF, the scanning originals are sequentially scanned until paper out; when finished, all the scanned images are saved as a single file.

OK button

Confirms and saves the parameters currently specified for the Scan Smart-Touch button on your scanner. The next time you press the Scan button, the defined and saved settings are retrieved as your current settings.

Cancel button

Abandons the parameters you have just made under the Scan tab panels; all the parameters are restored to their previous settings.

Reset button

Clears all the parameters you have just made under the Scan tab panel; all the parameters are reset to their default settings.

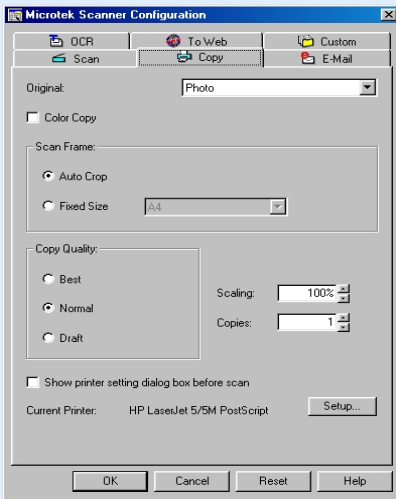
Help (?) button

Provides answers to any queries regarding the MSC utility and scanner button functions. Simply click the Help (?) button located at the bottom right (bottom left for Mac) corner of the MSC panel. To search for a topic, click the Index tab, then type a word associated with your question. You will be prompted for a short definition that will link you to a related topic.

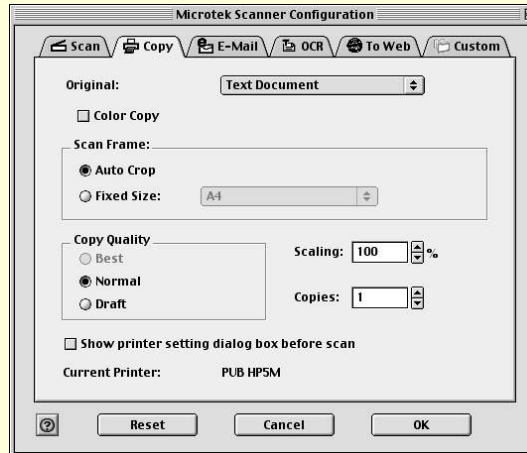
Customizing the Copy panel

To obtain a larger view of the panel, click either of the thumbnails below:

Windows



Macintosh



Select the topic you wish to view from the links below:

[Original](#)

[Color Copy](#)

[Scan Frame](#)

[Copy Quality](#)

[Scaling](#)

[Copies](#)

[Show printer setting dialog box before scan](#)

[Setup button \(Windows only\)](#)

[OK button](#)

[Cancel button](#)

[Reset button](#)

[Help button](#)

Original

Defines the type of your scan material. To scan printed matter (e.g., newspapers, art books, flyers, or magazines), choose Magazine. To scan graphics, choose Illustration.

Color Copy

Check this option if you are using color printer to print your scanned images.

Scan Frame

Selects either Auto Crop or Fixed Size.

Auto Crop: If Auto Crop is selected, the scanner first executes a preview, tries to determine the size of the original image, then performs the scan and crops the full scan frame to fit the image automatically.

Fixed Size: If Fixed Sized is selected, the Auto Crop function is disabled instead, you select the image size from the list. When a scan is performed, the selected scan frame size is framed on the center-top of the glass bed. Thus, it is the important that you position the original on the top-center of the glass bed. A centering marker is provided on the top ruler to guide you with alignment.

Thumbnail of the Scan frame: Shows the selected scan frame. If Auto Crop is selected, the selected scan frame of the thumbnail is disabled.

Copy Quality

Selects your printout quality. The higher the image quality, the longer the scanning time and the greater disk space required. Microtek recommends

that you to choose "Normal" quality for 150 dpi printing, "Best" for 600 or 300 dpi printing, and "Draft" for 100 dpi printing.

Scaling

Enlarges or reduces an image. Specifying scaling parameters above 100% will enlarge the scanned image, while specifying scaling parameters below 100% will reduce the scanned image. Scaling range is between 25% and 400%.

Copies

Defines the number of printout (1 to 99) copies required for a current scan job. This setting can be superseded with setting in your Printer Setup dialog box if you have checked the check box on "Show printer setting dialog box before scan."

Show printer setting dialog box before scan

Check this option if you want to display the printer dialog box before you start to print. Number of printout copies may be redefined in this dialog box. Uncheck this option if you do not want to bring up the printer dialog box and make printout quantity based on "Copies" setting.

Current Printer: Displays the currently selected printer.

Setup button (Windows only)

Selects one of the installed printer drivers as your default printer driver, or changes the currently selected printer driver.

OK button

Confirms and saves the parameters currently specified for the Copy Smart-Touch button on your scanner. The next time you press the Copy button, the defined and saved settings are retrieved as your current settings.

Cancel button

Abandons the parameters you have just made under the Copy tab panels; all the parameters are restored to their previous settings.

Reset button

Clears all the parameters you have just made under the Copy tab panel; all the parameters are reset to their default settings.

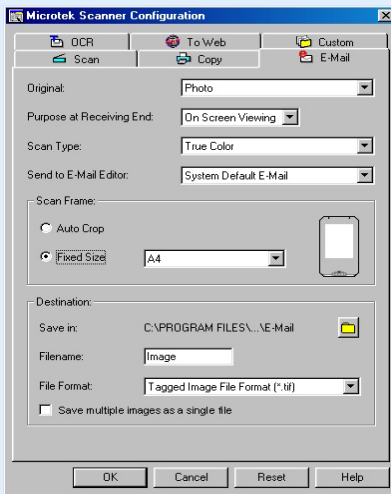
Help (?) button

Provides answers to any queries regarding the MSC utility and scanner button functions. Simply click the Help (?) button located at the bottom right (bottom left for Mac) corner of the MSC panel. To search for a topic, click the Index tab, then type a word associated with your question. You will be prompted for a short definition that will link you to a related topic.

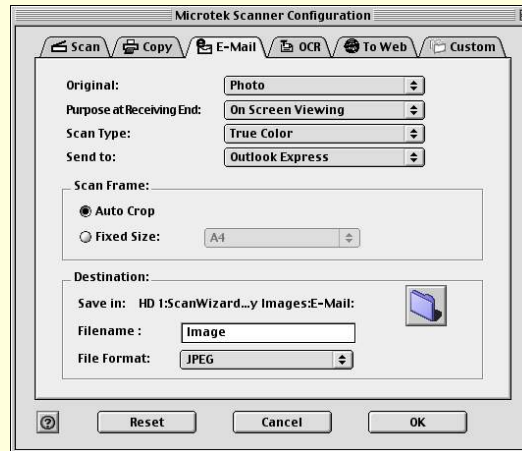
Customizing the E-mail panel

To obtain a larger view of the panel, click either of the thumbnails below:

Windows



Macintosh



Select the topic you wish to view from the links below:

[Original](#)

[Purpose at Receiving End](#)

[Scan Type](#)

[Send to E-Mail Editor/Send to](#)

[Scan Frame](#)

[Destination](#)

[OK button](#)

[Cancel button](#)

[Reset button](#)

Original

Defines the type of your scan material. To scan printed matter (e.g., newspapers, art books, flyers, or magazines), choose Magazine. To scan graphics, choose Illustration.

Purpose

Defines the ultimate disposition of the scanned image by the email recipient. For email-viewing purposes alone, choose On-Screen Viewing. Choose Custom if you want to set the resolution by yourself. It is recommended that the resolution not be set higher than the scanner's optical resolution.

Scan Type

Defines the color output for your document. Make sure you choose the correct image type; it is always best to choose the right image type. For instance, if you choose True Color to scan a gray-level image, a bigger file size and longer scanning time results with little improvement to image quality. Likewise, if your original is text only without images, choose Black & White to achieve better quality than Gray.

Some scanner models support JPEG output color format. Take note that for JPEG image format, the better the image quality, the greater the disk space required. If your Microtek scanner does not support the JPEG format, the JPEG selections will not appear under Scan Type.

Send to E-Mail Editor

Sets the E-Mail editor that will send the scanned image. The application is the E-Mail editor currently available in your disk.

Scan Frame

Select either Auto Crop or Fixed Size.

Auto Crop: If Auto Crop is selected, the scanner first executes a preview,

tries to determine the size of the original image, then performs the scan and crops the full scan frame to fit the image automatically.

Fixed Size: If Fixed Sized is selected, the Auto Crop function is disabled and instead, you select the image size from the list. When a scan is performed, the selected scan frame size is framed on the top-center of the glass bed. Thus, it is the important that you position the original on the top-center of the glass bed. A centering marker is provided on the top ruler to guide you with alignment.

Thumbnail of the Scan Frame: Shows the selected scan frame. If Auto Crop is selected, the selected scan frame of the thumbnail is disabled.

Destination

Defines the folder for saving and storing the scanned images.

Save in: Saves the image to the current folder destination. To change the folder location, click the folder icon at the right end of the existing path.

Filename: Refers to the prefix or root name in a series of filenames. By default, the root filename is "Image". If the TIFF file format is selected, the scanned images will be automatically identified as "Image001.tif", "Image002.tif", etc. You can change the default root filename to uniquely label your scan jobs.

File Format: TIFF is the default image file format.

Save multiple images as a single file: Allows you to save the scanned images into a single file. You can enable this option if the scan frame is "Fixed Size" and the output image file format is DCX, PDF, or TIF. When enabled, MSC will prompt you to place the next page as you scan from the scanner bed, then click the Continue button to scan; or click the Close button to save multiple images as a single file. If you scan through ADF, the scanning originals are sequentially scanned until paper out; when finished, all the scanned images are saved as a single file.

OK button

Confirms and saves the parameters currently specified for the E-mail Smart-

Touch button on your scanner. The next time you press the E-mail button, the defined and saved settings are retrieved as your current settings.

Cancel button

Abandons the parameters you have just made under the E-mail tab panels; all the parameters are restored to their previous settings.

Reset button

Clears all the parameters you have just made under the E-mail tab panel; all the parameters are reset to their default settings.

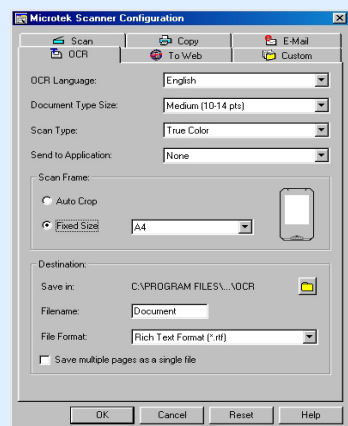
Help (?) button

Provides answers to any queries regarding the MSC utility and scanner button functions. Simply click the Help (?) button located at the bottom right (bottom left for Mac) corner of the MSC panel. To search for a topic, click the Index tab, then type a word associated with your question. You will be prompted for a short definition that will link you to a related topic.

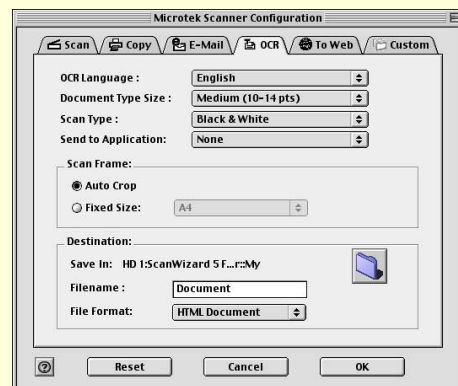
Customizing the OCR panel

To obtain a larger view of the panel, click either of the thumbnails below:

Windows



Macintosh



Select the topic you wish to view from the links below:

[OCR Language](#)

[Document Type Size](#)

[Scan Type](#)

[Send to Application](#)

[Scan Frame](#)

[Destination](#)

[OK button](#)

[Cancel button](#)

[Reset button](#)

[Help button](#)

OCR Language

The language with which the original text document is written. Options consist of major selection for multi-lingual formats. There are a number of languages available to choose

from, i.e., English, French, German, Italian, Spanish.

Document Type Size

Defines the font size of your final output – available selections include : Small (6-9 pts.), Medium - Default (10-14 pts.), and Large (15 pts and above).

Scan Type

Defines the color output for your document. Make sure you choose the correct image type; it is always best to choose the right image type. For instance, if you choose True Color to scan a gray-level image, a bigger file size and longer scanning time results with little improvement to image quality. Likewise, if your original is text only without images, choose Black & White to achieve better quality than Gray.

Send to Application

Defines the application that will edit and save the scanned document. .RTF, .XLS, or .TXT format is used if an "extensive text editing" is required. It will automatically open your default or selected word processing application after scanning.

If .PDF with hidden text is selected from the list – it will directly open Adobe Acrobat Reader, allowing you to view and print the scanned material in its original form. Plain .PDF supports viewing, printing, and minor editing.

.HTM is another file format also available from the list – this supports standard web formatting especially when incorporating scanned materials to a website.

If the application you prefer to use is not shown on the list yet, add it to the list by –

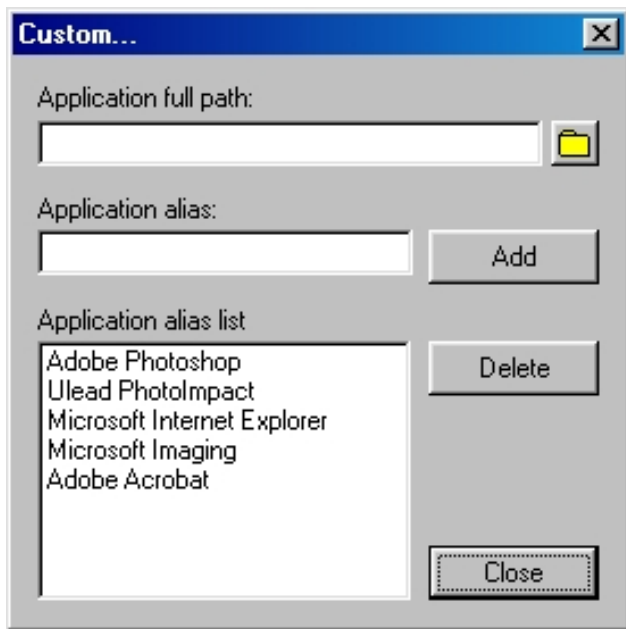
For Windows users:

Choose Custom from the bottom of the list. Use the resulting dialog box to search and add the new application to the list.

Application full path: Enter the full path name, or click the yellow folder icon to browse and search for the new application.

Application alias: Enter an alias for the application to be added.

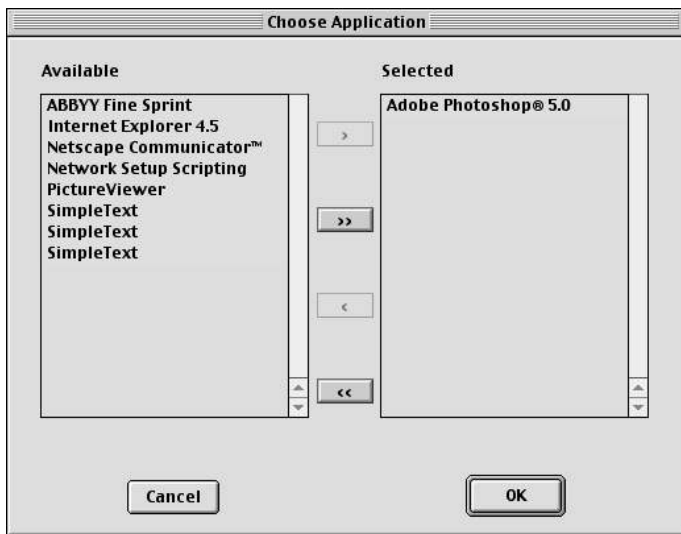
Add: When you have located your new application, click Add to include the new application to the Application alias list. Then click Close.



Delete: If you want to remove an existing application from the Alias List, select the application, then click Delete.

For Macintosh users:

Choose Custom from the bottom of the list to bring up "Choose Application" window. The MSC utility starts to search for the available software programs on your disk and then displays them on the left panel of the window.



> **or** >> : Select and Add a particular software or all the available software from the "Available" panel to the "Selected" panel.

< **or** << : Select and Delete a particular software or all the software from the "Selected" panel to the "Available" panel.

When you are done with your software selection. click OK to update the changes made, or Cancel to abandon the selection you've just made.

Scan Frame

Select either Auto Crop or Fixed Size.

Auto Crop: If Auto Crop is selected, the scanner first executes a preview, tries to determine the size of the original image, then performs the scan and crops the full scan frame to fit the image automatically.

Fixed Size: If Fixed Sized is selected, the Auto Crop function is disabled and instead, you select the image size from the list. When a scan is performed, the selected scan

frame size is framed on the top-center of the glass bed. Thus, it is the important that you position the original on the top-center of the glass bed. A centering marker is provided on the top ruler to guide you with alignment.

Thumbnail of the Scan Frame: Shows the selected scan frame. If Auto Crop is selected, the selected scan frame of the thumbnail is disabled.

Destination

Defines the folder for saving and storing the scanned images.

Save in: Save the document to the current folder destination. To change the folder location, click the folder icon at the right end of the existing path.

Filename: Refers to the prefix or root name in a series of filenames. By default, the root filename is "Document". If the .RTF file format is selected, the scanned images will be automatically identified as "Document001.rtf", "Document002.rtf", etc. You can change the default root file name to uniquely label your scan jobs.

File Format: RTF is the default file format for OCR.

Save multiple pages as a single file: Allows you to save the scanned pages into a single file. You can enable this option if the scan frame is "Fixed Size" and the output document file format is RTF, TXT, XLS, or HTM. When enabled, MSC will prompt you to place the next page as you scan from the scanner bed, then click the Continue button to scan; or click the Close button to save multiple pages as a single file. If you scan through ADF, the scanning originals are sequentially scanned until paper out; when finished, all the scanned images are saved as a single file.

OK button

Confirms and saves the parameters currently specified for the OCR Smart-Touch button on your scanner. The next time you press the OCR button, the defined and saved settings are retrieved as your current settings.

Cancel button

Abandons the parameters you have just made under the OCR tab panels; all the parameters are restored to their previous settings.

Reset button

Clears all the parameters you have just made under the OCR tab panel; all the parameters are reset to their default settings.

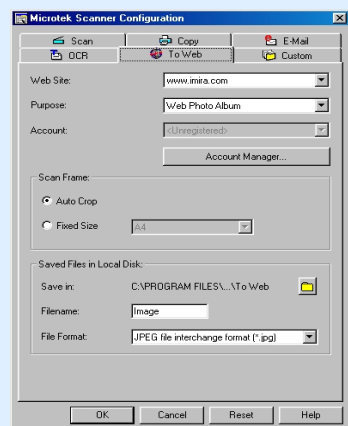
Help (?) button

Provides answers to any queries regarding the MSC utility and scanner button functions. Simply click the Help (?) button located at the bottom right (bottom left for Mac) corner of the MSC panel. To search for a topic, click the Index tab, then type a word associated with your question. You will be prompted for a short definition that will link you to a related topic.

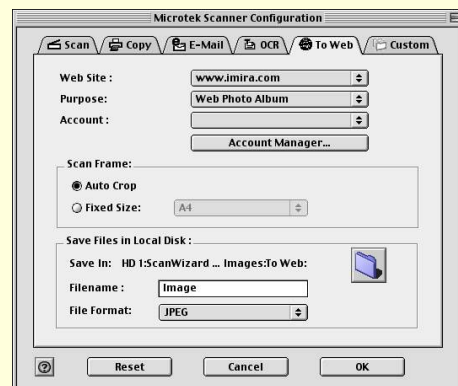
Customizing the To Web panel

To obtain a larger view of the panel, click either of the thumbnails below:

Windows



Macintosh



Select the topic you wish to view from the links below:

[Web Site](#)

[Purpose](#)

[Account](#)

[Account Manager button](#)

[Scan Frame](#)

[Saved Files in Local Disk](#)

[OK button](#)

[Cancel button](#)

[Reset button](#)

[Help button](#)

Note: Make sure that you are currently connected to the Internet (connection is active/operational), before you attempt to activate the actual Scan-to-Web button.

[Web Site](#)

Options for selecting your Photo-Sharing website where you can directly upload your scanned images into the Internet website photo album and/or order for prints.

Purpose

Defines the purpose of uploading the scanned image into the Web. If you want to place or add the scanned image into your website photo album for viewing, choose Web Photo Album. If you wish to order prints for the scanned image, choose Photo Printing.

Account

If you have an existing account and/or a registered member of any Microtek provided Photo-sharing website -- select your current user name under this option.

If you are a new user, the option box is grayed. You need to register in order to access the Photo-Sharing website. To register, click on the Account Manager button.

Account Manager

The **Account Manager** button is used for managing your exclusive photo-sharing account from a Microtek provided website.

To register for a free photo-sharing account, click the **Account Manager** button. When the Account Manager dialog box appears, select a photo-sharing website from the Web Site option, then click the **Create a new account** button. Follow the online registration, then close the Internet browser after you have completed the registration process and you will return to the Account Manager dialog box. You will need to activate your photo-sharing account (under the Account Settings) pane after you have successfully completed the online registration.

To activate a new account and/or add an existing account, click the Add button, key in your username and password, and then click Close. When you return to the MSC panel's "To Web" tab -- click OK to apply the settings that you have just made.

Windows

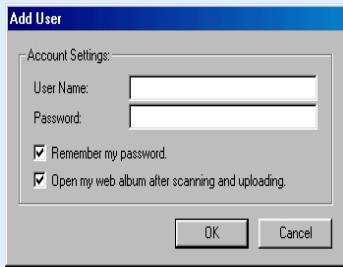
Web Site

Options for selecting your Internet Photo-Sharing website for uploading images directly to a specific website photo album.

Create a new account

If you do not have an existing Microtek provided photo-sharing account, you are required to register before you can upload images to this website. Simply click the "Create a new account" button, and then follow the online registration instructions.

Add



To add an existing account and/or activate a new account, click the Add button, key in your username and password, and then click OK in the dialog box that follows.

Edit

Click this button if you need to change/modify your current username and password.

Delete

Click this button to delete a particular account previously added under the Account Settings.

Macintosh



Scan Frame

Select either Auto Crop or Fixed Size.

Auto Crop: If Auto Crop is selected, the scanner first executes a preview, tries to determine the size of the original image, then performs the scan and crops the full scan frame to fit the image automatically.

Fixed Size: If Fixed Sized is selected, the Auto Crop function is disabled instead, you select the image size from the list. When a scan is performed, the selected scan frame size is framed on the top-center of the glass bed. Thus, it is the important that you position the original on the top-center of the glass bed. A centering marker is provided on the top ruler to guide you with alignment.

Thumbnail of the Scan Frame: Shows the selected scan frame. If Auto Crop is selected, the selected scan frame of the thumbnail is disabled.

Saved files in Local Disk

Scanned image(s) will be saved under the default "My Images" folder or a specified local disk first before it is uploaded to the Photo-Sharing website.

Save In: Saves the image to the current folder destination. To change the folder location, click the folder icon at the right end of the existing path.

Filename: Refers to the prefix or root name in a series of filenames. By default, the root filename is "Image" and default format is JPEG. The scanned images will be automatically identified as "Image001.jpg", "Image002. jpg ", etc. You can change the default root file name to uniquely label your scan jobs.

File Format: JPEG is the file format available -- as this is the standard image format widely used on the web.

OK button

Confirms and saves the parameters currently specified for the Scan-to-Web Smart-Touch button on your scanner. The next time you press the Scan-to-Web button, the defined and saved settings are retrieved as your current settings.

Cancel button

Abandons the parameters you have just made under the To Web tab panels; all the parameters are restored to their previous settings.

Reset button

Clears all the parameters you have just made under the To Web tab panel; all the parameters are reset to their default settings.

Help (?) button

Provides answers to any queries regarding the MSC utility and scanner button functions. Simply click the Help (?) button located at the bottom right (bottom left for Mac) corner of the MSC panel. To search for a topic, click the Index tab, then type a word associated with your question. You will be prompted for a short definition that will link you to a

related topic.

Customizing the Custom panel

The Custom panel provides 4 custom functions (**Power Saving, Scan, Fax, Launch Application**) allowing you to specify the **Custom** button function on the scanner. The Power Saving page is the default page of Custom panel. For more details on each function, see the function page you wish to view from the links below.

[Power Saving](#)

[Scan](#)

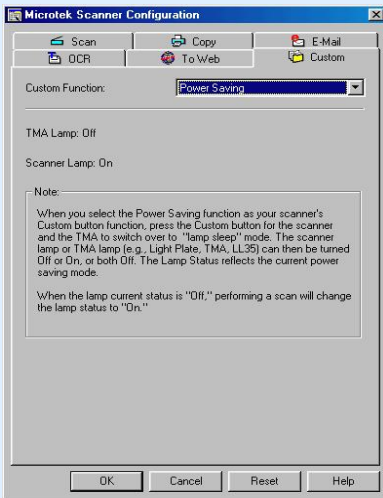
[Fax](#)

[Launch Application](#)

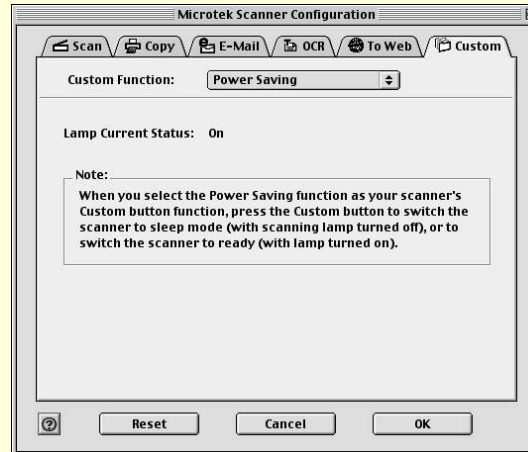
Power Saving page

Select "Power Saving" from the Custom Function option menu. The **Power Saving** function allows you to select the sleep mode of the scanning lamp by pressing the Custom button on your scanner.

Windows



Macintosh



Lamp Status

For Windows: When you select the Power Saving function as your scanner's Custom button function, press the Custom button for the scanner and the TMA to switch over to "lamp sleep" mode. The scanner lamp or TMA lamp (e.g., Light Plate, TMA, LL35) can then be turned Off or On, or both Off. The Lamp Status reflects the current power saving mode.

For Macintosh: When you select the Power Saving function as your scanner's Custom button function, press the Custom button on the scanner to switch the scanner to the sleep mode (scanning lamp turned off), or ready for scanning (scanning lamp turned on).

Note: When the lamp status is "Off," performing a scan will change the lamp status to "On."

OK button

Confirms and saves the parameters currently specified for the Custom

Smart-Touch button on your scanner. The next time you press the Custom button, the defined and saved settings are retrieved as your current settings.

Cancel button

Abandons the parameters you have just made under the Custom tab panels; all the parameters are restored to their previous settings.

Reset button

Clears all the parameters you have just made under the Custom tab panel; all the parameters are reset to their default settings.

Help (?) button

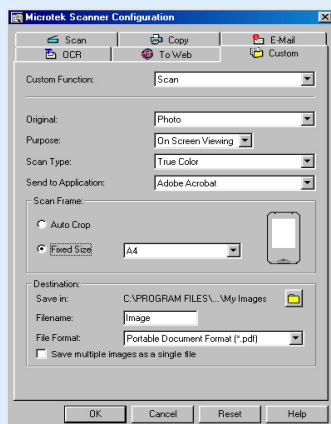
Provides answers to any queries regarding the MSC utility and scanner button functions. Simply click the Help (?) button located at the bottom right (bottom left for Mac) corner of the MSC panel. To search for a topic, click the Index tab, then type a word associated with your question. You will be prompted for a short definition that will link you to a related topic.

Scan page

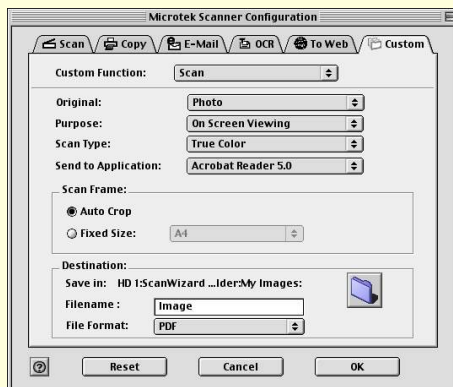
Select "Scan" from the Custom Function option menu. The **Scan** function allows you to define the Custom button as another set of scan settings that is different from the settings of the Scan panel of the MSC utility. This function is helpful if you require an additional Scan button that will be using a different set of scan attributes.

To obtain a larger view of the page, click either of the thumbnails below:

Windows



Macintosh



Select the topic you wish to view from the links below:

[Original](#)

[Purpose](#)

[Scan Type](#)

[Send to Application](#)

[Scan Frame](#)

[Destination](#)

[OK button](#)

[Cancel button](#)

[Reset button](#)

[Help button](#)

Original

Defines the type of your scan material. To scan printed matter (e.g., newspapers, art books, flyers, or magazines), choose Magazine. To scan graphics, choose Illustration.

Purpose

Defines the destination of the scanner output. For viewing purposes alone, choose On Screen Viewing. Choose Custom if you want to set a specific resolution. It is recommended that the resolution not be set higher than the scanner's optical resolution.

Scan Type

Defines the color output for your document. Make sure you choose the correct image type; it is always best to choose the right image type. For instance, if you choose True Color to scan a gray-level image, a bigger file size and longer scanning time results with little improvement to image quality. Likewise, if your original is text only without images, choose Black & White to achieve better quality than Gray.

Some scanner models support JPEG output color format. Take note that for JPEG image format, the better the image quality, the greater the disk space required. If your Microtek scanner does not support the JPEG format, the JPEG selections will not appear under Scan Type.

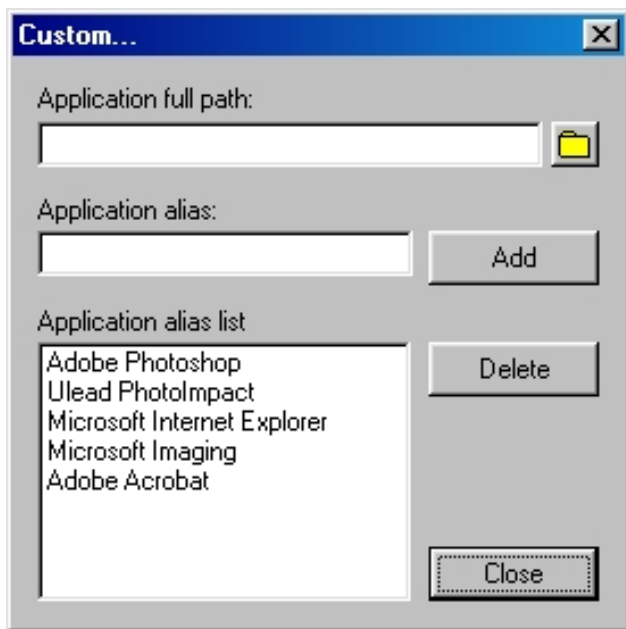
Send to Application

Defines the application that will edit and save the scanned image; the application can be an image editor, web browser, or Acrobat program available on your disk.

If the application you prefer to use is not shown on the list yet, add it to the list by –

For Windows users:

Choose Custom from the bottom of the list. Use the resulting dialog box to search and add the new application to the list.



Application full path: Enter the full path name, or click the yellow folder icon to browse and search for the new application.

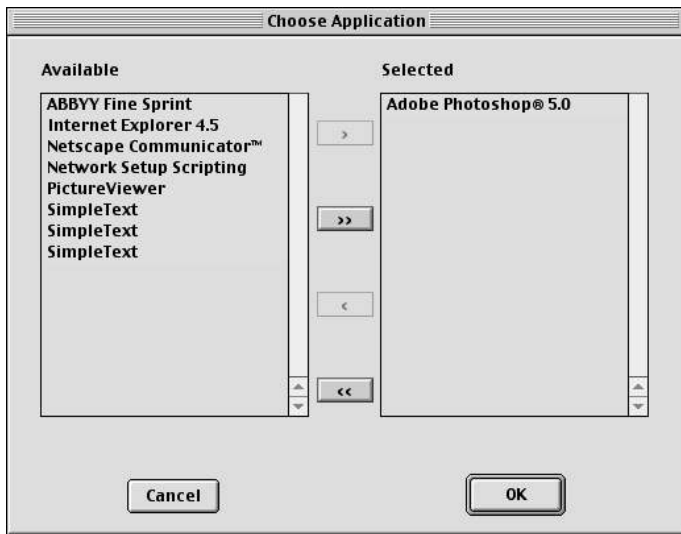
Application alias: Enter an alias for the application to be added.

Add: When you have located your new application, click Add to include the new application to the Application alias list. Then click Close.

Delete: If you want to remove an existing application from the Application alias list, select the application, then click Delete.

For Macintosh users:

Choose Custom from the bottom of the list to bring up "Choose Application" window. The MSC utility starts to search for the available software programs on your disk and then displays them on the left panel of the window.



> **or** >> : Select and Add a particular software or all the available software from the "Available" panel to the "Selected" panel.

< **or** << : Select and Delete a particular software or all the software from the "Selected" panel to the "Available" panel.

When you are done with your software selection, click OK to update the changes made, or Cancel to abandon the selection you've just made.

Scan Frame

Select either Auto Crop or Fixed Size.

Auto Crop: If Auto Crop is selected, the scanner first executes a preview, tries to determine the size of the original image, then performs the scan and crops the full scan frame to fit the image automatically.

Fixed Size: If Fixed Sized is selected, the Auto Crop function is disabled and instead, you select the image size from the list. When a scan is performed, the selected scan

frame size is framed on the top-center of the glass bed. Thus, it is the important that you position the original on the top-center of the glass bed. A centering marker is provided on the top ruler to guide you with alignment.

Thumbnail of the Scan frame: Shows the selected scan frame. If Auto Crop is selected, the selected scan frame of the thumbnail is disabled.

Destination

Defines the folder for saving and storing the scanned images.

Save in: Saves the image to the current folder destination. To change the folder location, click the folder icon at the right end of the existing path.

Filename: Refers to the prefix or root name in a series of filenames. By default, the root filename is "Image". If the TIFF file format is selected, the scanned images will be automatically identified as "Image001.tif", "Image002.tif", etc. You can change the default root filename to label your scan jobs uniquely.

File Format: PDF is the default image file format.

Save multiple images as a single file: Allows you to save the scanned images into a single file. You can enable this option if the scan frame is "Fixed Size" and the output image file format is DCX, PDF, or TIF. When enabled, MSC will prompt you to place the next page as you scan from the scanner bed, then click the Continue button to scan; or click the Close button to save multiple images as a single file. If you scan through ADF, the scanning originals are sequentially scanned until paper out; when finished, all the scanned images are saved as a single file.

OK button

Confirms and saves the parameters currently specified for the Custom Smart-Touch button on your scanner. The next time you press the Custom button, the defined and saved settings are retrieved as your current settings.

Cancel button

Abandons the parameters you have just made under the Custom tab panels; all the parameters are restored to their previous settings.

Reset button

Clears all the parameters you have just made under the Custom tab panel; all the parameters are reset to their default settings.

Help (?) button

Provides answers to any queries regarding the MSC utility and scanner button functions. Simply click the Help (?) button located at the bottom right (bottom left for Mac) corner of the MSC panel. To search for a topic, click the Index tab, then type a word associated with your question. You will be prompted for a short definition that will link you to a related topic.

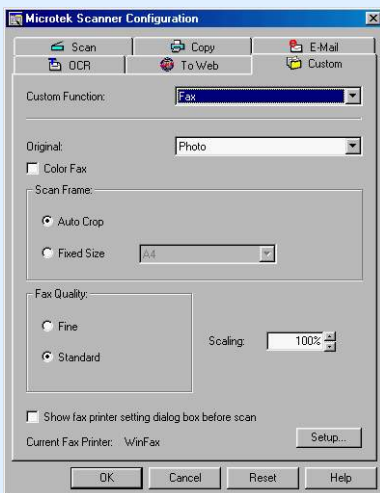
Fax page

Select "Fax" from the Custom Function option menu. The **Fax** function allows you to launch an installed fax driver by pressing the scanner's Custom button.

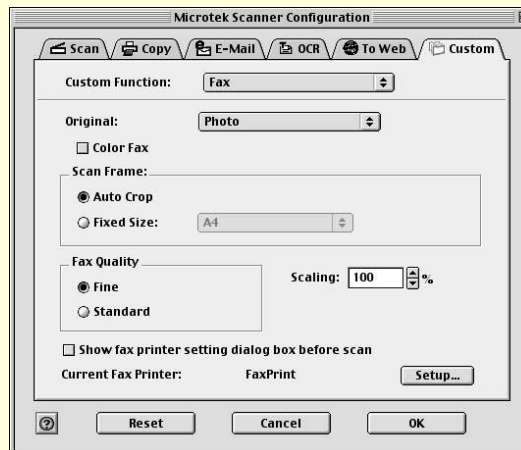
If you have already installed the fax driver in your computer but the fax driver cannot be found, or if the fax driver has never been installed in your computer, please follow the on-screen message to complete the fax driver setup.

To obtain a larger view of the page, click either of the thumbnails below:

Windows



Macintosh



Select the topic you wish to view from the links below:

[Original](#)

[Color Fax](#)

[Scan Frame](#)

[Fax Quality](#)

[Scaling](#)

Show fax printer setting dialog box before scan

Setup button

OK button

Cancel button

Reset button

Help button

Original

Defines the type of your scan material. To scan printed matter (e.g., newspapers, art books, flyers, or magazines), choose Magazine. To scan graphics, choose Illustration.

Color Fax

Check this option if both you and your fax receiver use color fax to transmit color images.

Scan Frame

Selects either Auto Crop or Fixed Size.

Auto Crop: If Auto Crop is selected, the scanner first executes a preview, tries to determine the size of the original image, then performs the scan and crops the full scan frame to fit the image size automatically.

Fixed Size: If Fixed Sized is selected, the Auto Crop function is disabled and instead, you select the image size from the list. When a scan is performed, the selected scan frame size is framed on the center-top of the glass bed. Thus, it is the important that you position the original on the top-center of the glass bed. A centering marker is provided on the top ruler to guide you with alignment.

Thumbnail of the Scan frame: Shows the selected scan frame. If Auto

Crop is selected, the selected scan frame of the thumbnail is disabled.

Fax Quality

Selects your printout quality. The higher the image quality, the longer the scanning time and the greater disk space required. Microtek recommends that you to choose "Fine" quality for 200-dpi faxing and "Standard" for 100-dpi faxing.

Scaling

Enlarges or reduces an image. Specifying scaling parameters above 100% will enlarge the scanned image, while specifying scaling parameters below 100% will reduce the scanned image. Scaling range is between 25% and 400%.

Show fax printer setting dialog box before scan

Check this option if you want to display the printer dialog box before you start to fax. Uncheck this option if you do not want to bring up the printer dialog box.

Current Fax Printer: Displays the currently selected fax driver.

Setup button

Selects one of the installed fax drivers as your default fax driver, or changes the currently selected fax driver.

OK button

Confirms and saves the parameters currently specified for the Custom Smart-Touch button on your scanner. The next time you press the Custom button, the defined and saved settings are retrieved as current settings.

Cancel button

Abandons the parameters you have just made under the Custom tab panels; all the parameters are restored to their previous settings.

Reset button

Clears all the parameters you have just made under the Custom tab panel; all the parameters are reset to their default settings.

Help (?) button

Provides answers to any queries regarding the MSC utility and scanner button functions. Simply click the Help (?) button located at the bottom right (bottom left for Mac) corner of the MSC panel. To search for a topic, click the Index tab, then type a word associated with your question. You will be prompted for a short definition that will link you to a related topic.

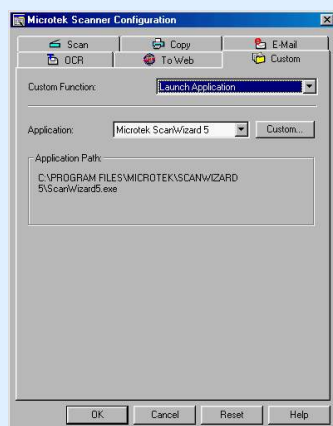
Launch Application page

Select "Launch Application" from the Custom Function option menu. The **Launch Application** function allows you to launch the installed application by pressing the scanner's Custom button.

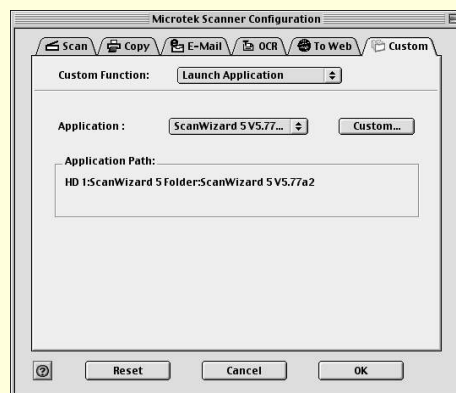
Your application for launching can be an image editor, web browser, Acrobat program or any other application available on your disk. The default application for launching is ScanWizard 5.

To obtain a larger view of the page, click either of the thumbnails below:

Windows



Macintosh



Application

Shows the selected application for launching.

Application Path

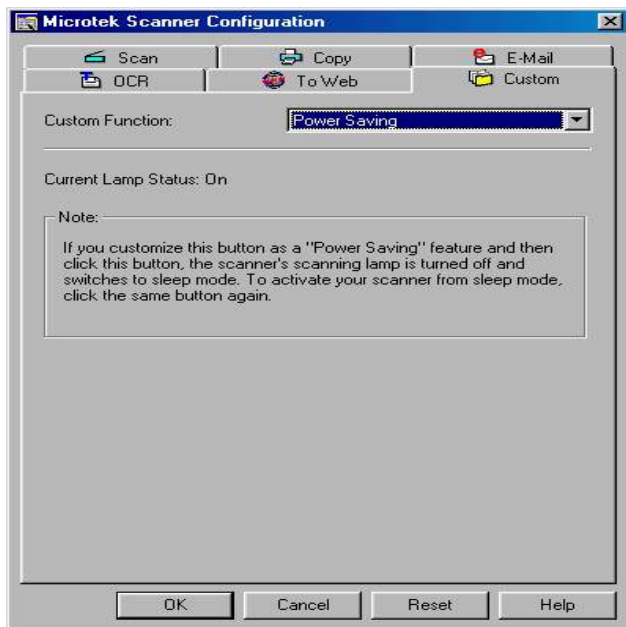
Shows the application's file location in your computer.

Custom button

Adds or deletes the application from the Application alias list. Please take note that you should retain at least one application on the list; otherwise, the Custom button on the scanner will not work.

For Windows users:

Click the Custom button. Use the resulting dialog box to search and add the new applications to the list.



Application full path: Enter the full path name, or click the yellow folder icon to browse and search for the new application.

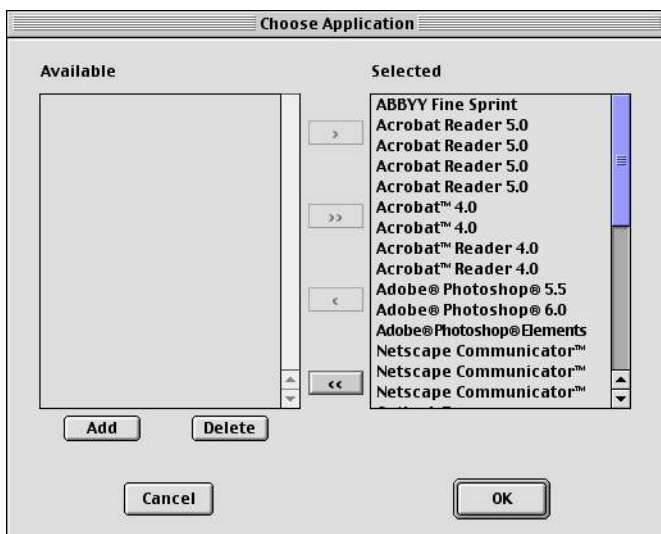
Application alias: Enter an alias for the application to be added.

Add: When you have located your new application, click Add to include the new application to the Application alias list. Then click Close.

Delete: If you want to remove an existing application from the Application alias list, select the application, then click Delete.

For Macintosh users:

Click the Custom button to bring up the "Choose Application" window. The MSC utility starts to search for the available software programs on your hard disk and displays them in the left panel of the window.



> **or** >> : Select and Add a particular software or all the available software from the "Available" panel to the "Selected" panel.

< **or** << : Select and Delete a particular software or all the software from the "Selected" panel to the "Available" panel.

When you are done with your software selection, click OK to update the changes made, or Cancel to abandon the selection you've just made.

OK button

Confirms and saves the parameters currently specified for the Custom Smart-Touch button on your scanner. The next time you press the Custom button, the defined and saved settings are retrieved as current settings.

Cancel button

Abandons the parameters you have just made under the Custom tab panels; all the parameters are restored to their previous settings.

Reset button

Clears all the parameters you have just made under the Custom tab panel; all the parameters are reset to their default settings.

Help (?) button

Provides answers to any queries regarding the MSC utility and scanner button functions. Simply click the Help (?) button located at the bottom right (bottom left for Mac) corner of the MSC panel. To search for a topic, click the Index tab, then type a word associated with your question. You will be prompted for a short definition that will link you to a related topic.

How the scanner buttons work

Microtek's smart-touch scanning buttons provide an intuitive and easy method to quickly and easily scan images through one-touch scanning:

1. Place your image on the scanner bed.
2. Press the **Scan** button -- scans an image to a file; **Copy** -- sends an image to a printer; **E-mail** -- attaches an image to an E-mail message; **OCR** -- scans a document and converts it to editable text; or **Scan-to-Web** -- uploads a scanned image directly to the web; **Custom** -- customizes 4 commonly used functions: Power Saving, Fax, Scan, and Launch Application.
3. To restore the default settings for each button, launch your Microtek Scanner Configuration (MSC) utility, and then click the Reset button on your MSC panel. Specify and customize a brand new configuration for your next scanning task.

[Back to Welcome](#)

[Using the Microtek Scanner Configuration](#)

Button Configuration

The operational parameters for each button can be set through the [Microtek Scanner Configuration \(MSC\) Utility](#).

To carry out a specific action (Scan, Copy, E-mail, OCR, Scan-to-Web or Custom), press the corresponding button on the scanner. The scan will be performed in accordance with the designated button function using the parameters configured in this MSC utility.

[Scan button](#) - How it works

Captures high resolution images with outstanding quality that can automatically be saved as files or sent to another application for further processing.

[Copy button](#) - How to make copies

Scans the image and sends it to your printer, transforming your scanner and printer into a convenient copy station. Simply specify the number of copies you want.

[E-mail button](#) - How to send an image

Scans the image and delivers it directly to your email editor.

[OCR button](#) - How to scan and turn documents into editable files

The built-in OCR (Optical Character Recognition) is capable of recognizing multilingual documents and converting it into fully editable digital files.

[Scan-to-Web button](#) - How to scan and upload images on the web

Scans the image and posts it instantly onto a Photo-Sharing website.

[Cancel/Setup](#) - How to abort scanning or launch the MSC utility

Cancels an ongoing scan job, or launches the MSC utility when the scanner is idle.

[Custom](#) - How to customize the four most commonly used functions

Power Saving - defines the on/off status for the scanning lamp

Scan - defines another Scan button on your scanner

Fax - launches a fax driver installed in your computer

Launch Application - defines an application to be launched.

Scan button

1. Press the **Scan** button on your scanner. This will automatically scan and save your image, based on the MSC settings. The saved images are stored in your local disk. They also appears as a shortcut under My Images folder on your desktop.
2. To scan another image or successive images using the same setting, press the **Scan** button again. Repeat this until all scanning tasks are completed, or until you need to specify new settings for the next job.
3. To customize the parameters for the Scan button, specify your settings (Scan Type, Purpose, Destination, etc.) under the [Scan tab](#) of this MSC utility.

Copy button

1. Click the **Copy** button on your scanner. This will scan the image and send it directly to your default printer for printing a "hard copy" similar to what a photocopier does.
2. To customize the parameters for the Copy button, specify your preferred settings (No. of copies, Printer destination, etc.) under the [Copy tab](#) of this MSC utility.

E-mail button

1. Press the **E-mail** button on your scanner. This will automatically scan and deliver your image(s) to your e-mail editor, based on the MSC settings. The saved images are stored in your local disk. They also appears as a shortcut under My Images folder on your desktop.
2. To scan another image or successive images using the same setting, press the **E-mail** button again. Repeat this until all scanning tasks are completed, or until you need to specify the settings for the next job.
3. To customize the parameters for the E-mail button, specify your settings (Scan Type, Purpose, Destination, etc.) under the [E-mail tab](#) of this MSC utility.

OCR button

1. Press the **OCR** button on your scanner. This will automatically scan, recognize and convert the document, save it to a file, and delivers it to a specified application for editing -- fully based on the MSC settings. The saved images are stored in your local disk. They also appears as a shortcut under My Images folder on your desktop.
2. To OCR another document or multiple documents/pages using the same setting, press the **OCR** button again. Repeat this until all OCR tasks are completed, or until you need to specify new settings for the next job.
3. To customize the parameters for the OCR button, specify your settings (OCR Language, Document Type Size, Scan Type, Application, Destination, File Format etc.) under the [OCR tab](#) of this MSC utility.

Scan-to-Web button

1. Make sure that you are connected to the Internet and you have already registered/sign-in for a free photo-sharing account from a Microtek provided website, before pressing the **Scan-to-Web** button on your scanner.
2. Press the **Scan-to-Web** button on your scanner -- this will automatically scan, save the scanned image to file, connect, and instantly upload it to your Photo-sharing website – fully based on the MSC settings. The saved images are stored in your local disk. You can also retrieve the saved images by double-clicking the default folder icon labeled "My Images" on your Windows desktop.
3. To upload another image or several images using the same setting, press the **Scan-to-Web** button again. Repeat this until all the photos have been uploaded to your web album, or until you need to specify new settings for the next job. Note that all uploaded photos are automatically saved in your hard disk before they are sent to website.
4. To customize the parameters for the Scan-to-Web button, specify your settings (Web Site, Purpose, Scan Frame, Filename, File Format etc.) under the tab "[To Web](#)" of this MSC utility.

Setup button

1. Press the **Setup*** button on your scanner. This will automatically launch Microtek Scanner Configuration (MSC) utility.
2. When you launch the MSC, the **Microtek Scanner Configuration (MSC)** panel appears. Click any of the tabs to view or customize the button settings according to your respective requirements.

*The Setup (not Cancel/Setup) button is applicable only to earlier Microtek scanner models.

Cancel button

Press the **Cancel*** button on your scanner. This will quickly stop and abandon any scan job action and exit ScanWizard 5. While activating the MSC, pressing this button will exit the MSC utility.

*The Cancel (not Cancel/Setup) button is applicable only to earlier Microtek scanner models.

Cancel/Setup button

Press the **Cancel/Setup** button on your scanner. This will automatically launch Microtek Scanner Configuration (MSC) utility when the scanner is not performing any scan job, or it stops and abandons any scan job.

Custom button

When you press the **Custom** button on your scanner, your scanner starts to perform the function that was previously defined in the Custom Panel of the MSC utility.

Note: Make sure that you have closed and exited ScanWizard 5 before pressing the Custom button to carry out a specific task you defined on the Custom button.

Power Saving function button

Press the **Custom** button on your scanner. This will change the lamp current status. The lamp current status can be checked by choosing the "[Power Saving](#)" function under "Custom" in the MSC utility.

Scan function button

1. Press the **Custom** button on your scanner. This will automatically scan and save your image, based on the "Scan" function settings under "Custom" in the MSC utility.
2. To customize the parameters for the **Custom** button - Scan function, specify your "[Scan](#)" function settings under "Custom" in the MSC utility.

Fax function button

1. Press the **Custom** button on your scanner. This will scan the image and send it directly to your default installed fax for faxing similar to what a fax machine does.
2. To customize the parameters for the **Custom** button - Fax function, specify your "[Fax](#)" function settings under "Custom" in the MSC utility.

Launch Application function button

1. Press the **Custom** button on your scanner. This will automatically launch an installed application, based on the "Launch Application" function settings under "Custom" in the MSC utility.
2. To customize the parameters for the **Custom** button - Launch Application function, specify your "[Launch Application](#)" function settings under "Custom" in the MSC utility.

How to setup MAPI application as your system default E-mail (for Windows only)

Setting Microsoft Outlook Express

1. Launch Outlook Express.
2. On the Tools menu, click Options. When the Options dialog box appears, click the General tab.
3. From the General tab, select the check boxes: Make Outlook Express my default e-mail program and Make Outlook Express my default Simple MAPI, then click Apply and OK to save the settings made.

Setting Microsoft Outlook 97

1. Microsoft Outlook 97 doesn't have the option for setting MAPI application.
2. ScanWizard 5 will send the scanned image to Microsoft Outlook 97 if it is the default MAPI application in your system. For example, if you have two MAPI-compatible applications, Outlook Express and Microsoft Outlook 97, in your system, but Outlook Express was not set as your default MAPI application, therefore; ScanWizard 5 will send the image(s) to Microsoft Outlook 97.

Setting Netscape Messenger

ScanWizard 5 only supports Netscape version 4.5 or later.

1. Launch Netscape Messenger.
2. On the Edit menu, select the Preferences item. The Preferences dialog box appears.
3. In this dialog box, select Use Netscape Messenger from MAPI-based applications checkbox, then click OK.

Setting Eudora Light/Qualcomm Eudora Pro 3.x

1. Launch Eudora Light.
2. From the Tools menu, click Options. The Options dialog box appears.
3. In the Category list select (highlight) MAPI, then under Use Eudora MAPI server select Always and then click OK.

When I chose Auto Crop under the MSC utility, the scanner was unable to recognize or detect my scan material.

Rather than using the “Auto Crop” function under the Scan Frame category, you can select Fixed Frame instead, and choose the closest size that matches your scan material from the Fixed frame options. If you can’t find anything from the list of options, Microtek recommends that you close the MSC utility and launch ScanWizard 5.

When I first connected my scanner, I got a message that said ScanWizard cannot find the scanner.

If you encounter an error message like this, the connection between your scanner and PC may not be secure. This causes the system not to “see” the scanner. In this case, check all cables and make sure your scanner is on. You may also want to turn the scanner and computer off, wait for 5 seconds, then turn them on again to reset everything OR follow these simple steps:

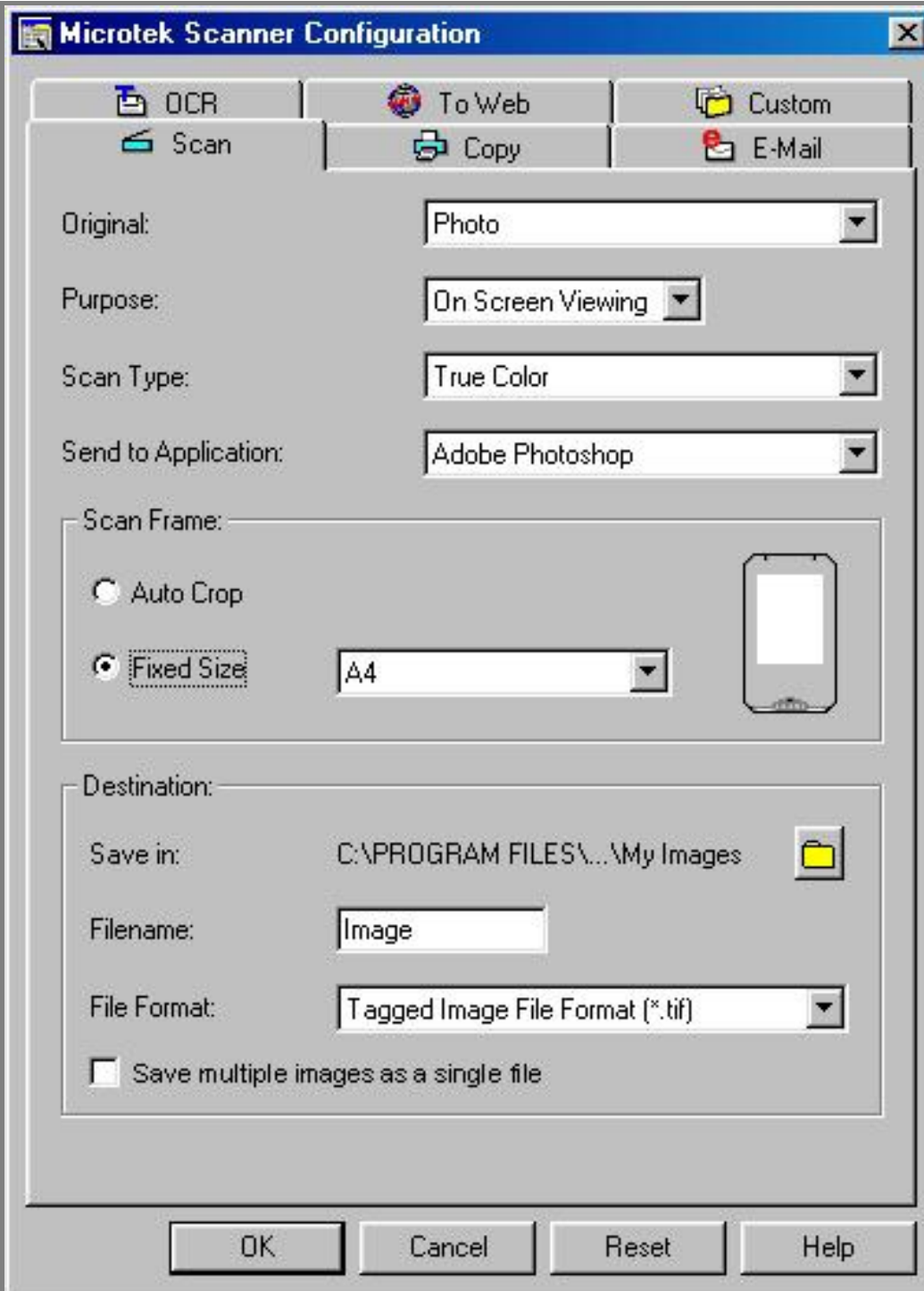
1. Turn your scanner on.
2. For windows 95/98: Right click My Computer, then select Properties.
3. For Windows 2000: Double click the following in succession: My Computer--Control Panel—System, Select the Hardware tab, then click the Device Manager button.
4. Click the Refresh button
5. To verify proper connection has been accomplished between scanner and ScanWizard 5, right click the scanner icon in the Status Bar. From the resulting menu, click "Find Scanners". Then click "Next>" button from the "Scanner Finder" dialog box that follows. If your scanner is listed in the resulting "Scanners found" list box, then you have a successful connection.

You may also use the Scanner Test utility from ScanWizard 5 folder to verify proper linkage of your scanner to the ScanWizard 5. The utility can also be used to test serviceability of your scanner at the same time.

My printer keeps on producing the wrong number of copies. What should I do?

Your MSC Copy tab panel setting for number of copies is in conflict with that of your printer's setup dialog box. If you want your printer to follow the MSC setting for number of copies, then do NOT check the "Show printer setting dialog box before scan" check box in the Copy tab panel. Otherwise, check the check box and your printer will ignore your MSC settings and follow the number of copies set in the printer setup dialog box.

Scan panel



For more details, select the topic you wish to view from the links below:

[Original](#)

[Purpose](#)

[Scan Type](#)

[Send to Application](#)

[Scan Frame](#)

[Destination](#)

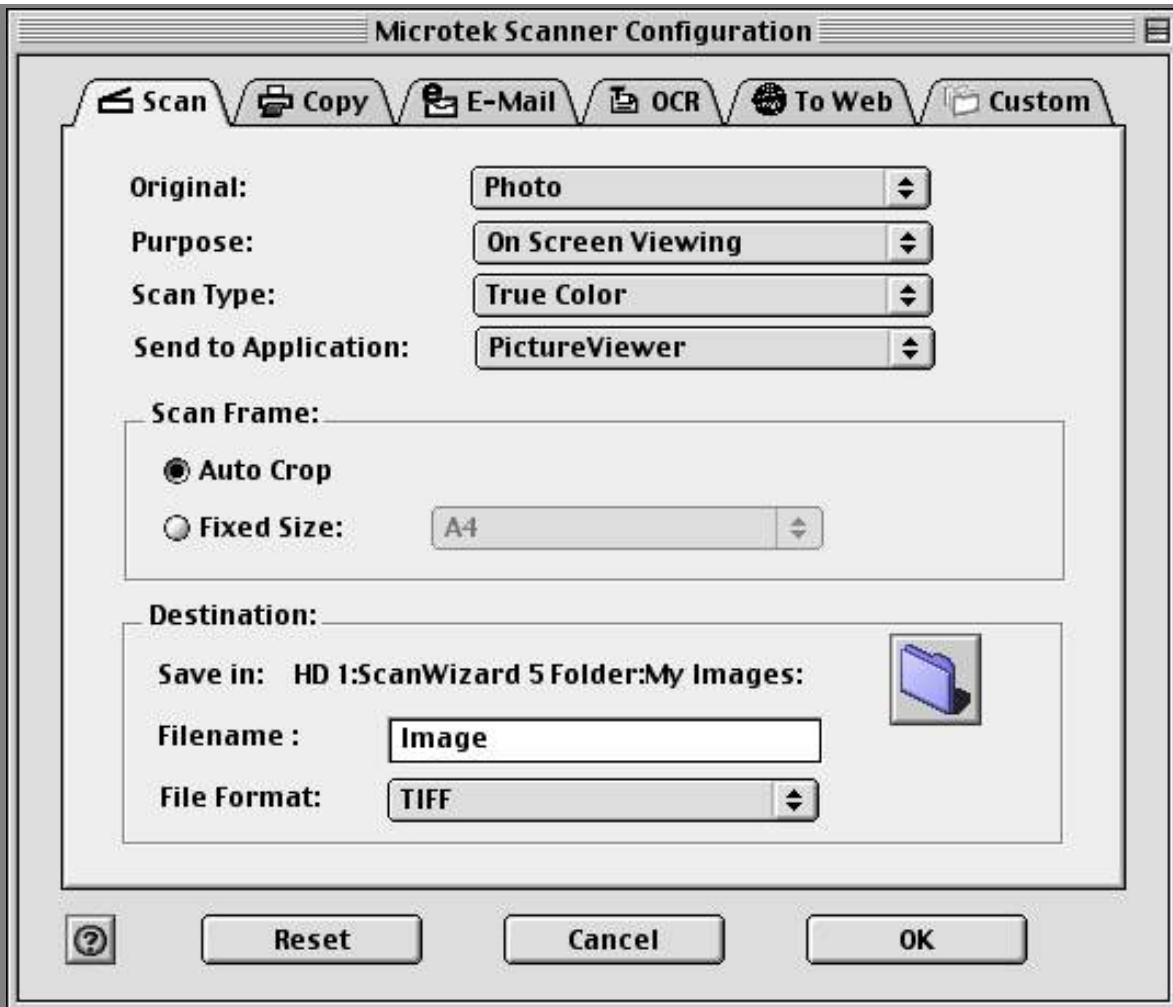
[OK button](#)

[Cancel button](#)

[Reset button](#)

[Help button](#)

Scan panel



For more details, select the topic you wish to view from the links below:

[Original](#)

[Purpose](#)

[Scan Type](#)

[Send to Application](#)

[Scan Frame](#)

[Destination](#)

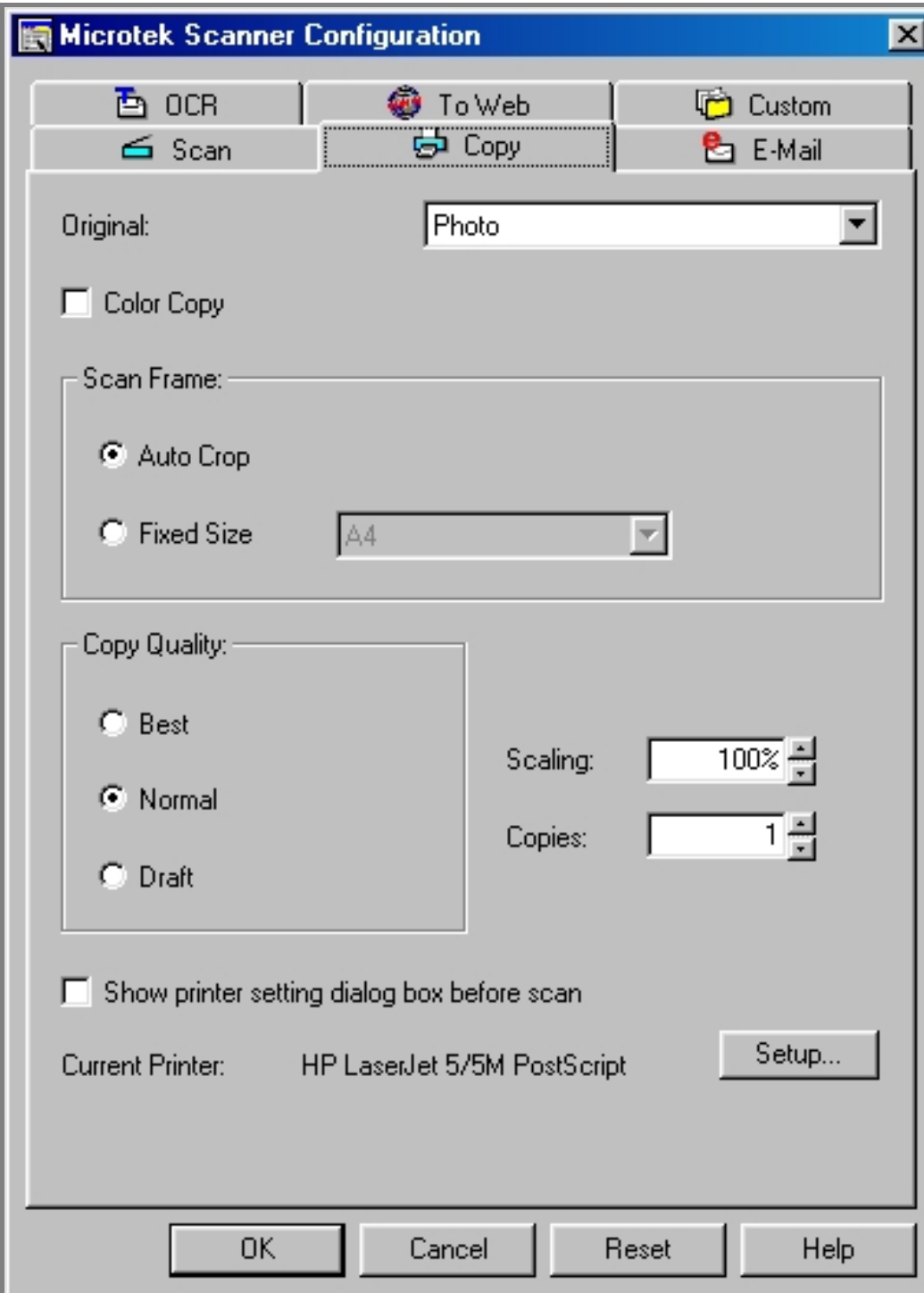
[OK button](#)

[Cancel button](#)

[Reset button](#)

[Help button](#)

Copy panel



For more details, select the topic you wish to view from the links below:

[Original](#)

[Color Copy](#)

[Scan Frame](#)

[Copy Quality](#)

[Scaling](#)

[Copies](#)

[Show printer setting dialog box before scan](#)

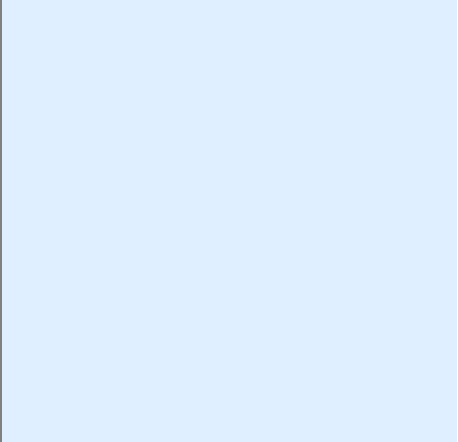
[Setup button](#)

[OK button](#)

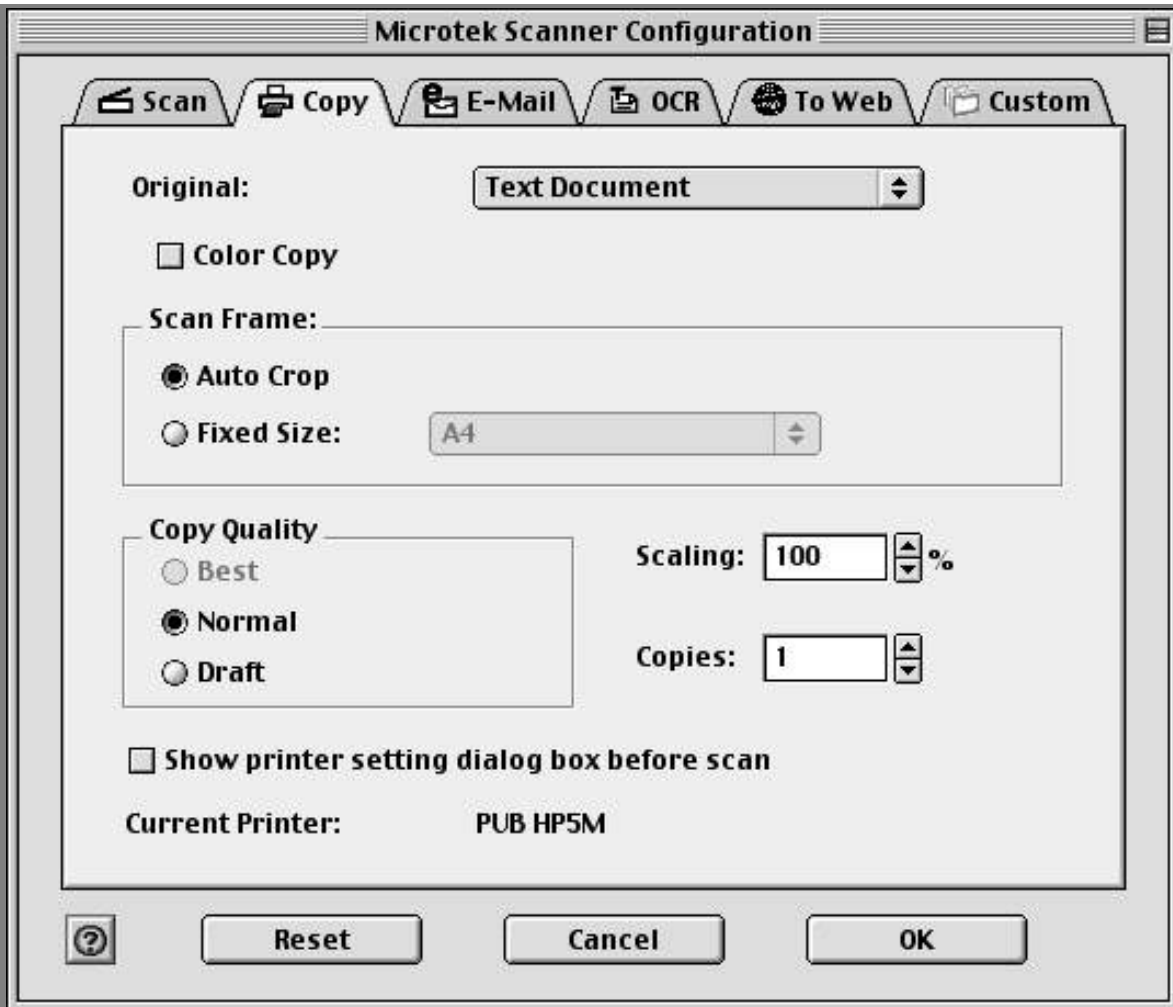
[Cancel button](#)

[Reset button](#)

[Help button](#)



Copy panel



For more details, select the topic you wish to view from the links below:

[Original](#)

[Color Copy](#)

[Scan Frame](#)

[Copy Quality](#)

[Scaling](#)

[Copies](#)

[Show printer setting dialog box before scan](#)

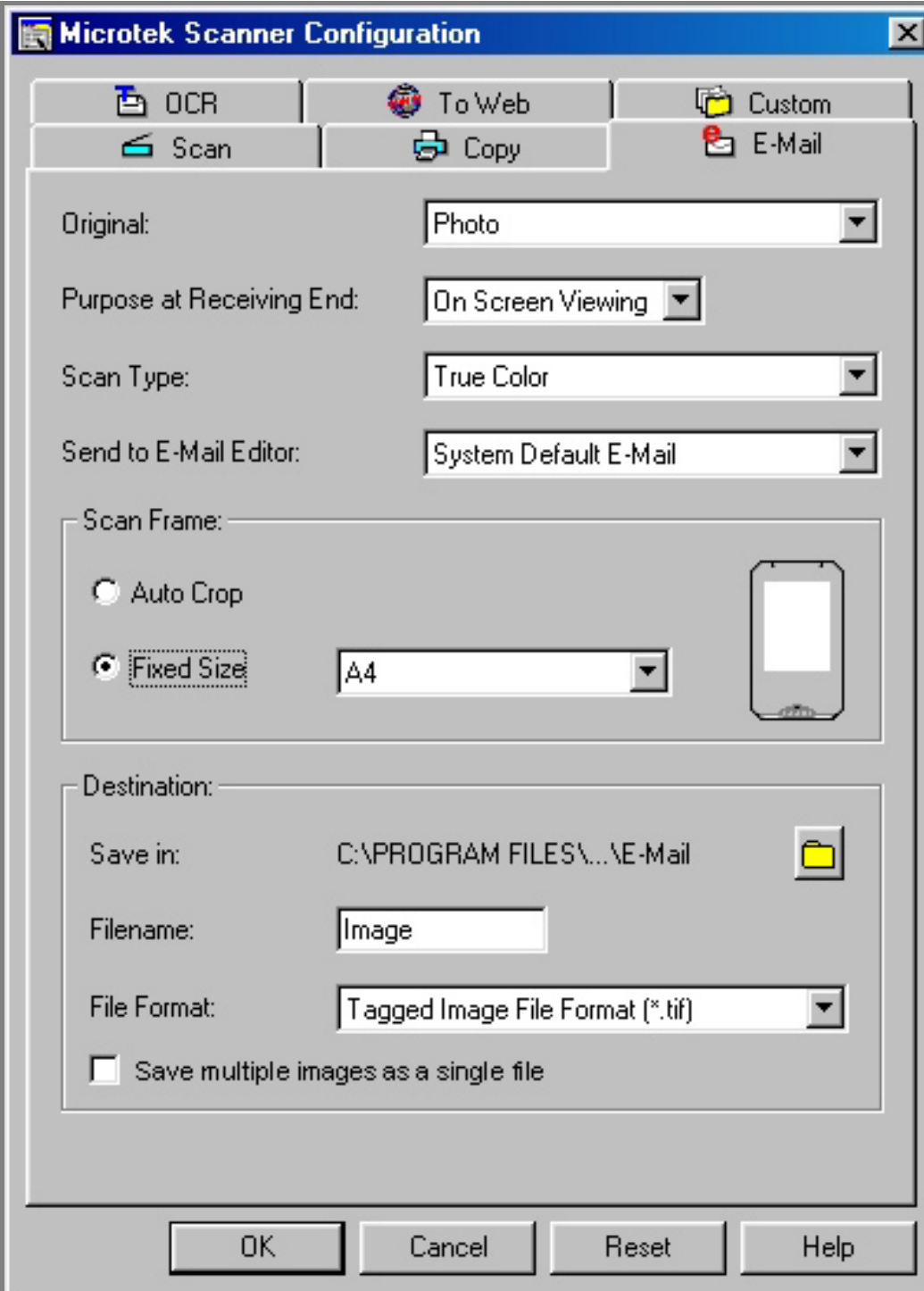
[OK button](#)

[Cancel button](#)

[Reset button](#)

[Help button](#)

E-mail panel



For more details, select the topic you wish to view from the links below:

[Original](#)

[Purpose at Receiving End](#)

[Scan Type](#)

[Send to E-Mail Editor](#)

[Scan Frame](#)

[Destination](#)

[OK button](#)

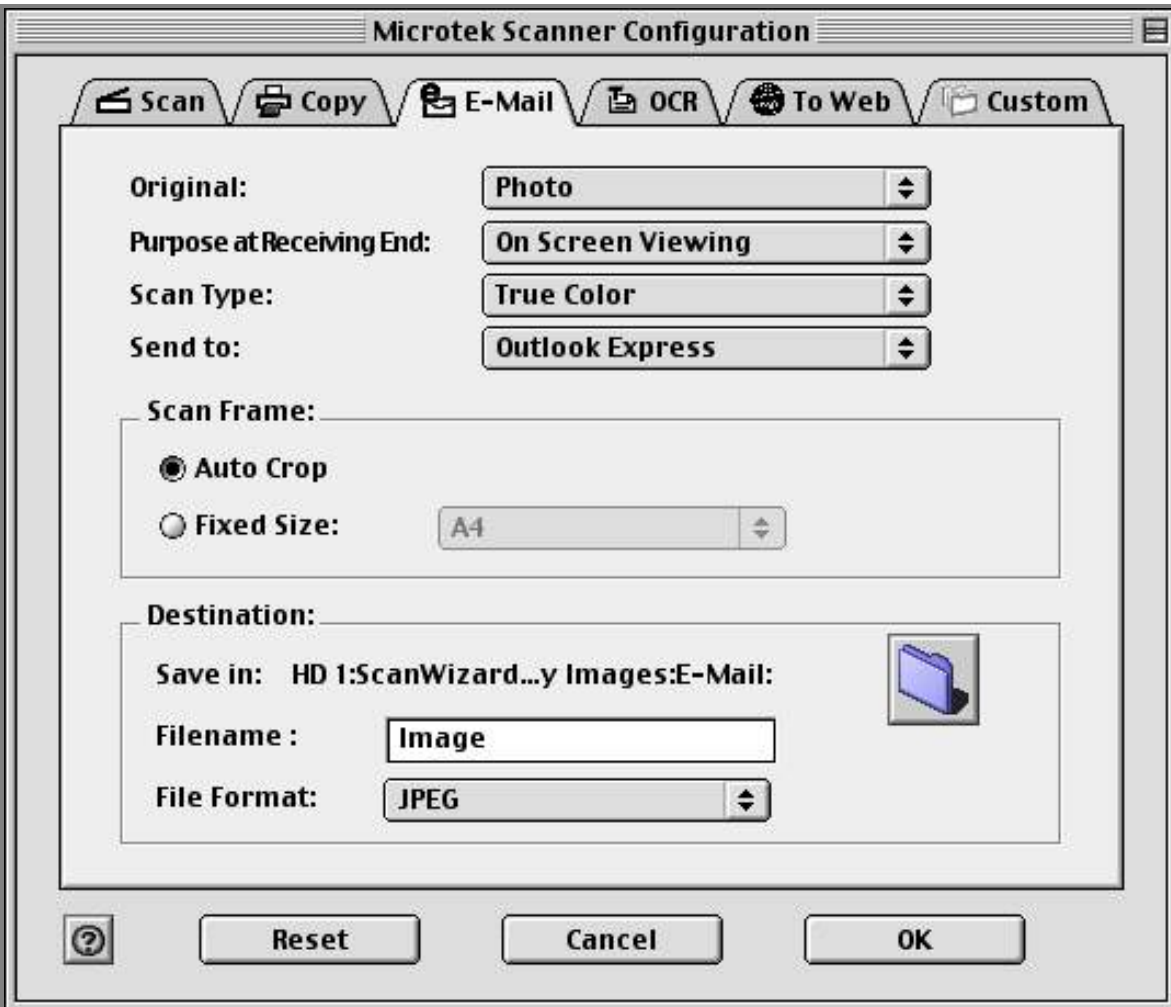
[Cancel button](#)

[Reset button](#)

[Help button](#)



E-mail panel



For more details, select the topic you wish to view from the links below:

[Original](#)

[Purpose at Receiving End](#)

[Scan Type](#)

[Send to](#)

[Scan Frame](#)

[Destination](#)

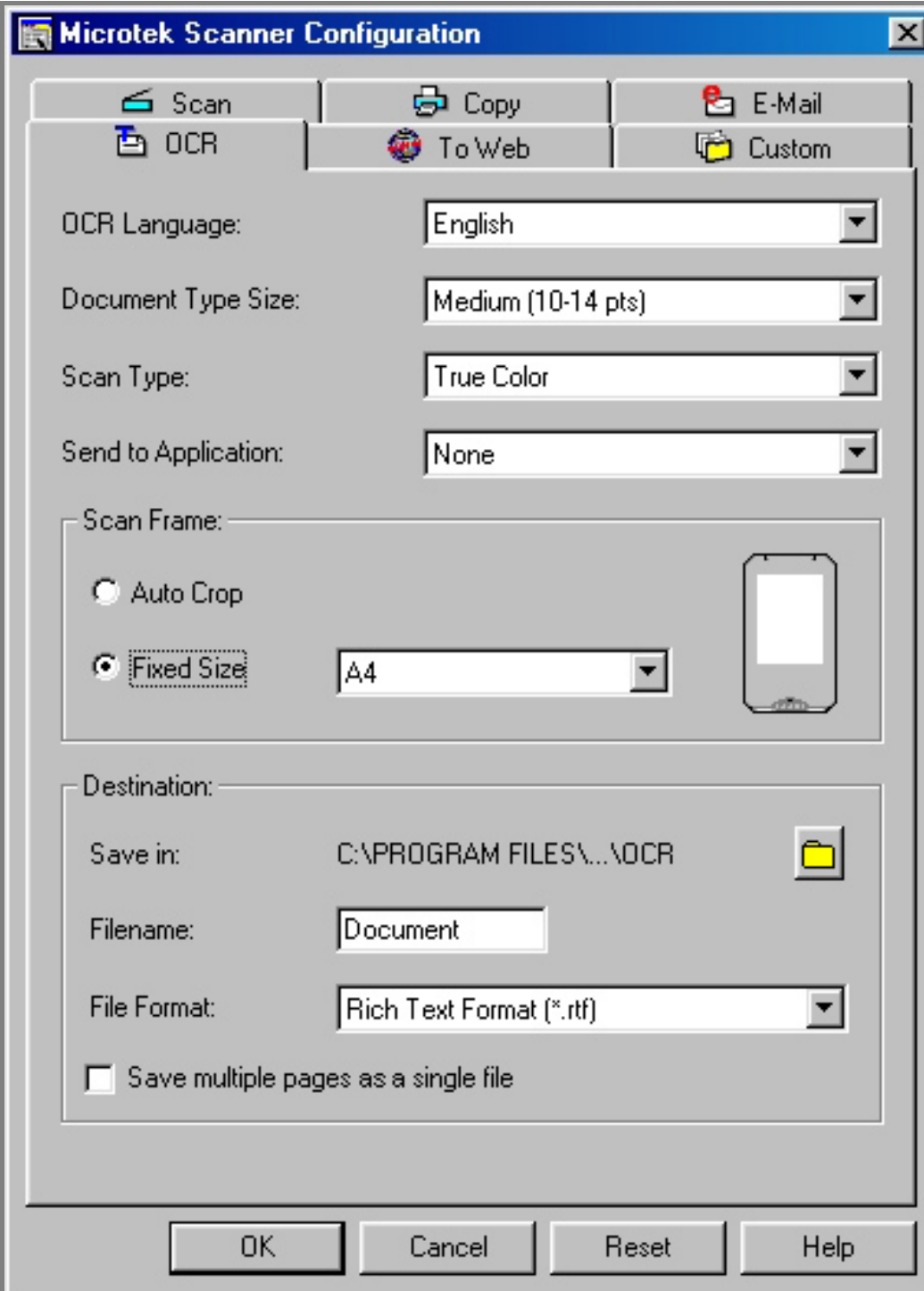
[OK button](#)

[Cancel button](#)

[Reset button](#)

[Help button](#)

OCR panel



For more details, select the topic you wish to view from the links below:

[OCR Language](#)

[Document Type Size](#)

[Scan Type](#)

[Send to Application](#)

[Scan Frame](#)

[Destination](#)

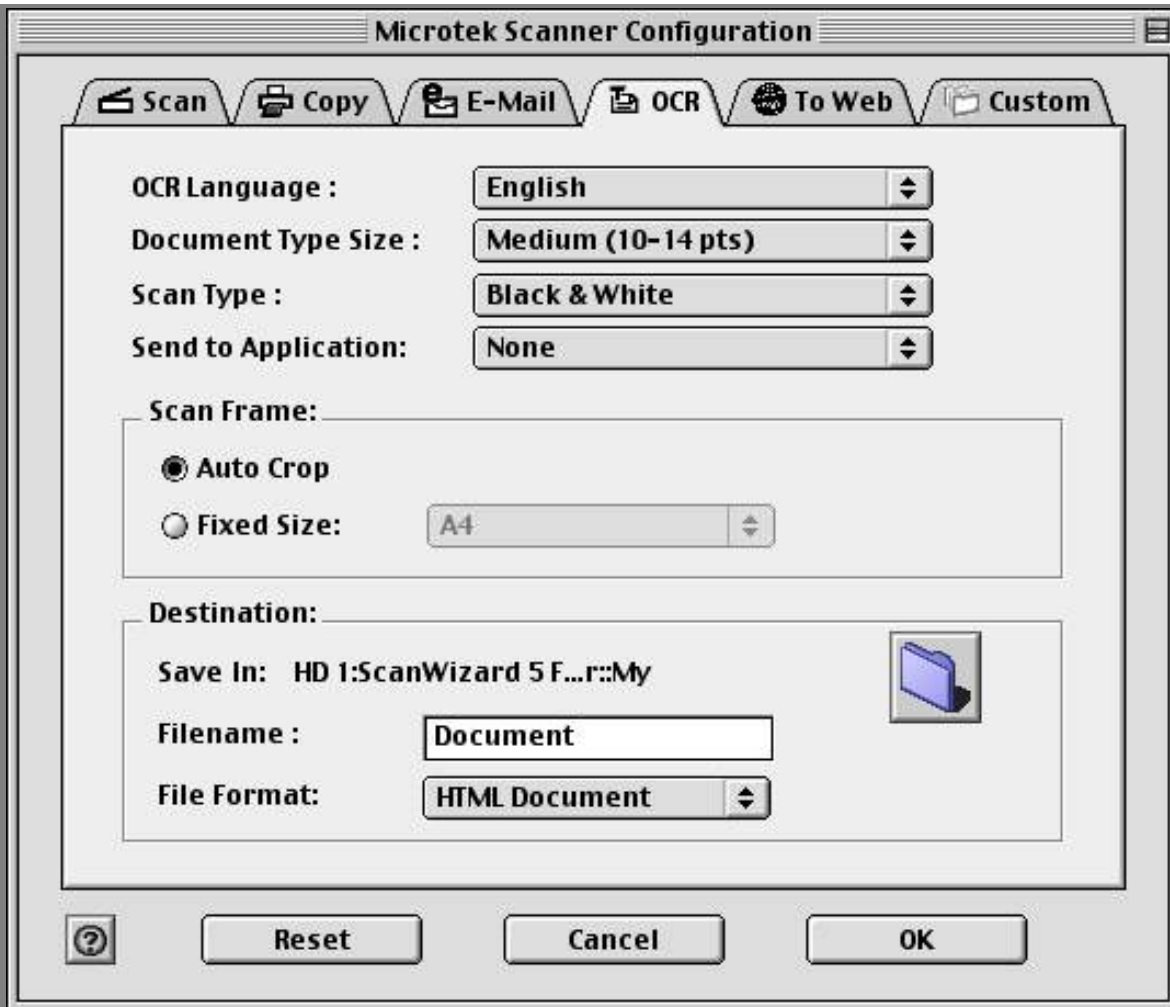
[OK button](#)

[Cancel button](#)

[Reset button](#)

[Help button](#)

OCR panel



For more details, select the topic you wish to view from the links below:

[OCR Language](#)

[Document Type Size](#)

[Scan Type](#)

[Send to Application](#)

[Scan Frame](#)

[Destination](#)

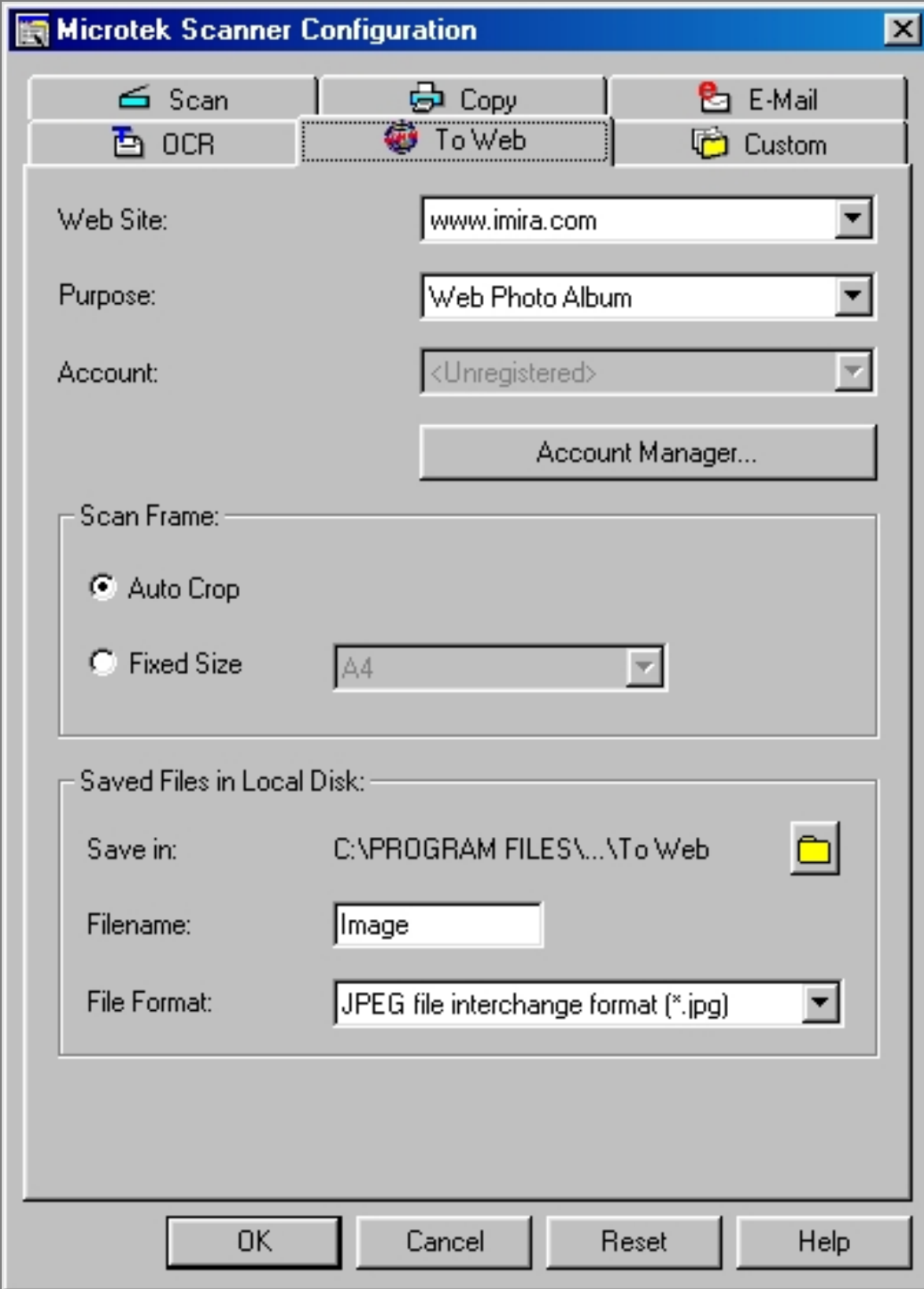
[OK button](#)

[Cancel button](#)

[Reset button](#)

[Help button](#)

To Web panel



For more details, select the topic you wish to view from the links below:

[Web Site](#)

[Purpose](#)

[Account](#)

[Account Manager button](#)

[Scan Frame](#)

[Saved Files in Local Disk](#)

[OK button](#)

[Cancel button](#)

[Reset button](#)

[Help button](#)

To Web panel



For more details, select the topic you wish to view from the links below:

[Web Site](#)

[Purpose](#)

[Account](#)

[Account Manager button](#)

[Scan Frame](#)

[Saved Files in Local Disk](#)

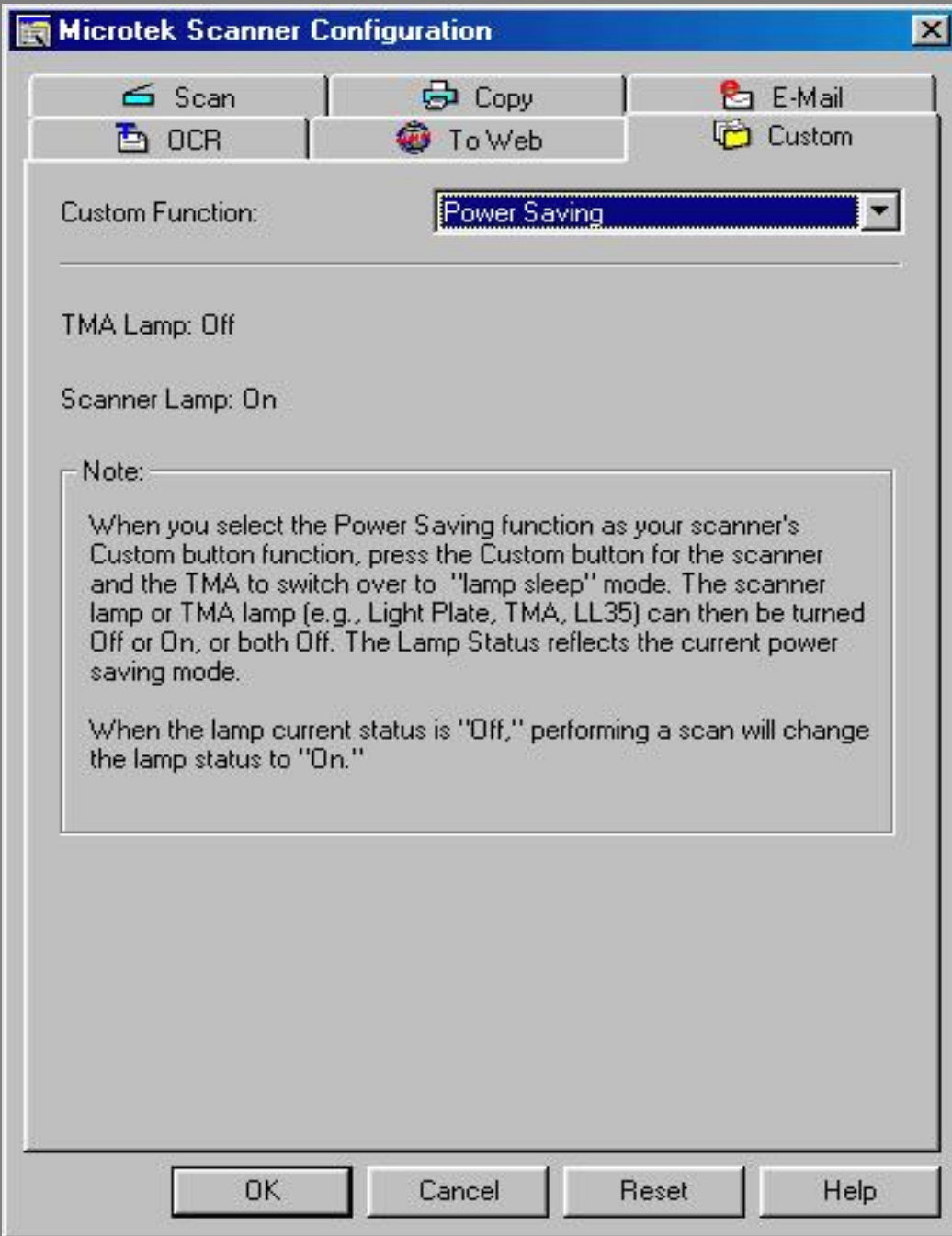
[OK button](#)

[Cancel button](#)

[Reset button](#)

[Help button](#)

Power Saving page



For more details, select the topic you wish to view from the links below:

[Lamp Current Status](#)

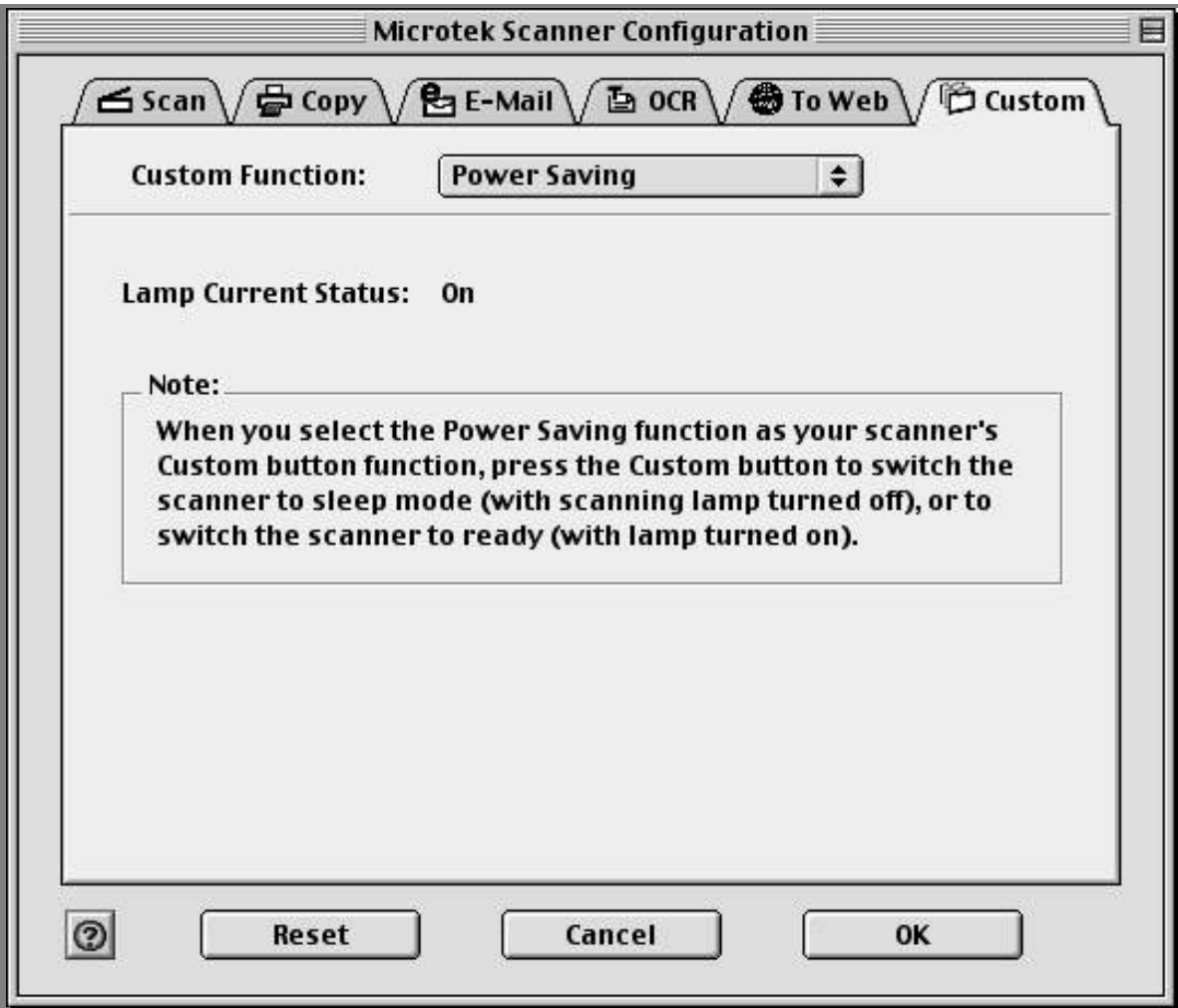
[OK button](#)

[Cancel button](#)

[Reset button](#)

[Help button](#)

Power Saving page



For more details, select the topic you wish to view from the links below:

[Lamp Current Status](#)

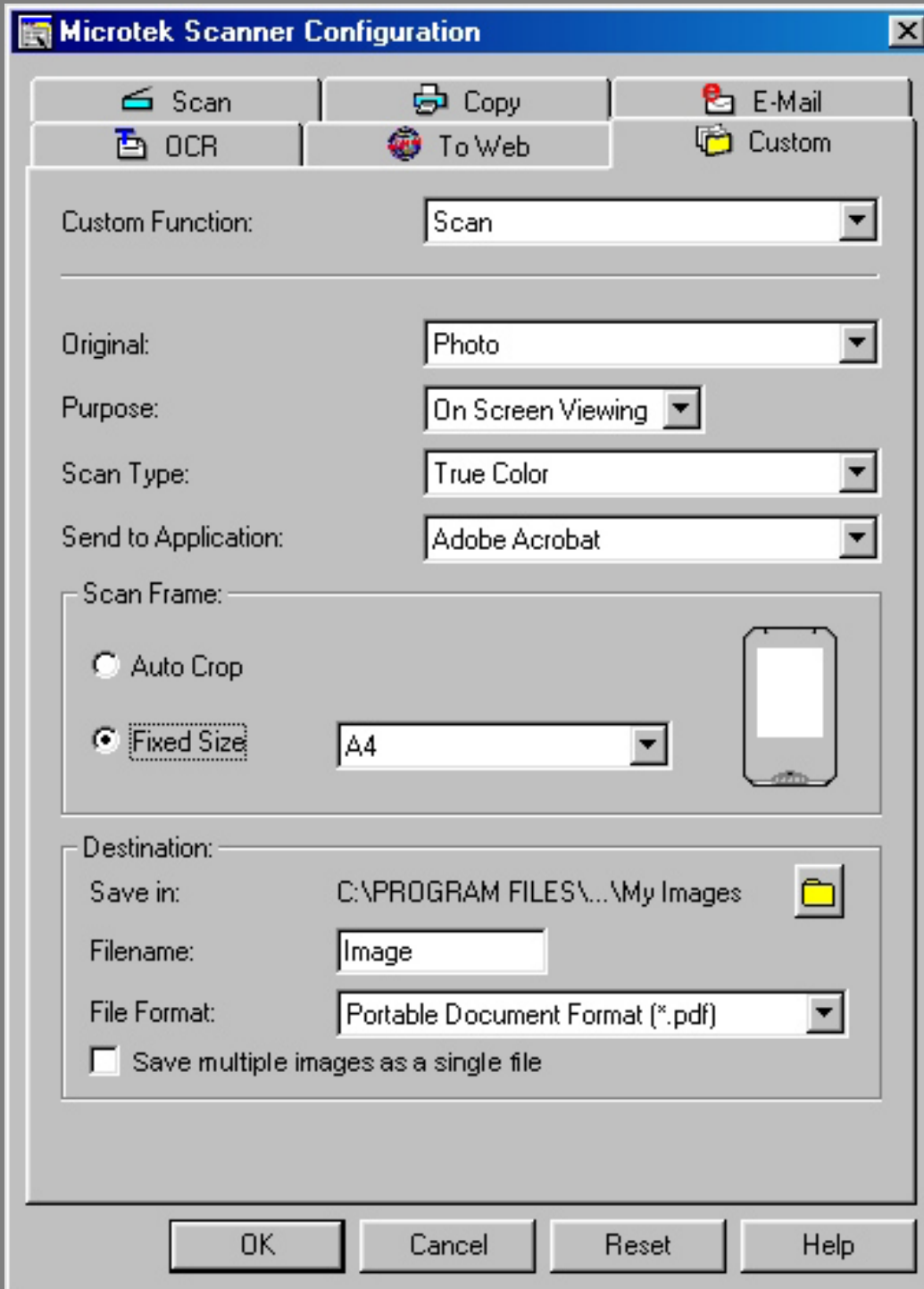
[OK button](#)

[Cancel button](#)

[Reset button](#)

[Help button](#)

Scan page



For more details, select the topic you wish to view from the links below:

[Original](#)

[Purpose](#)

[Scan Type](#)

[Send to Application](#)

[Scan Frame](#)

[Destination](#)

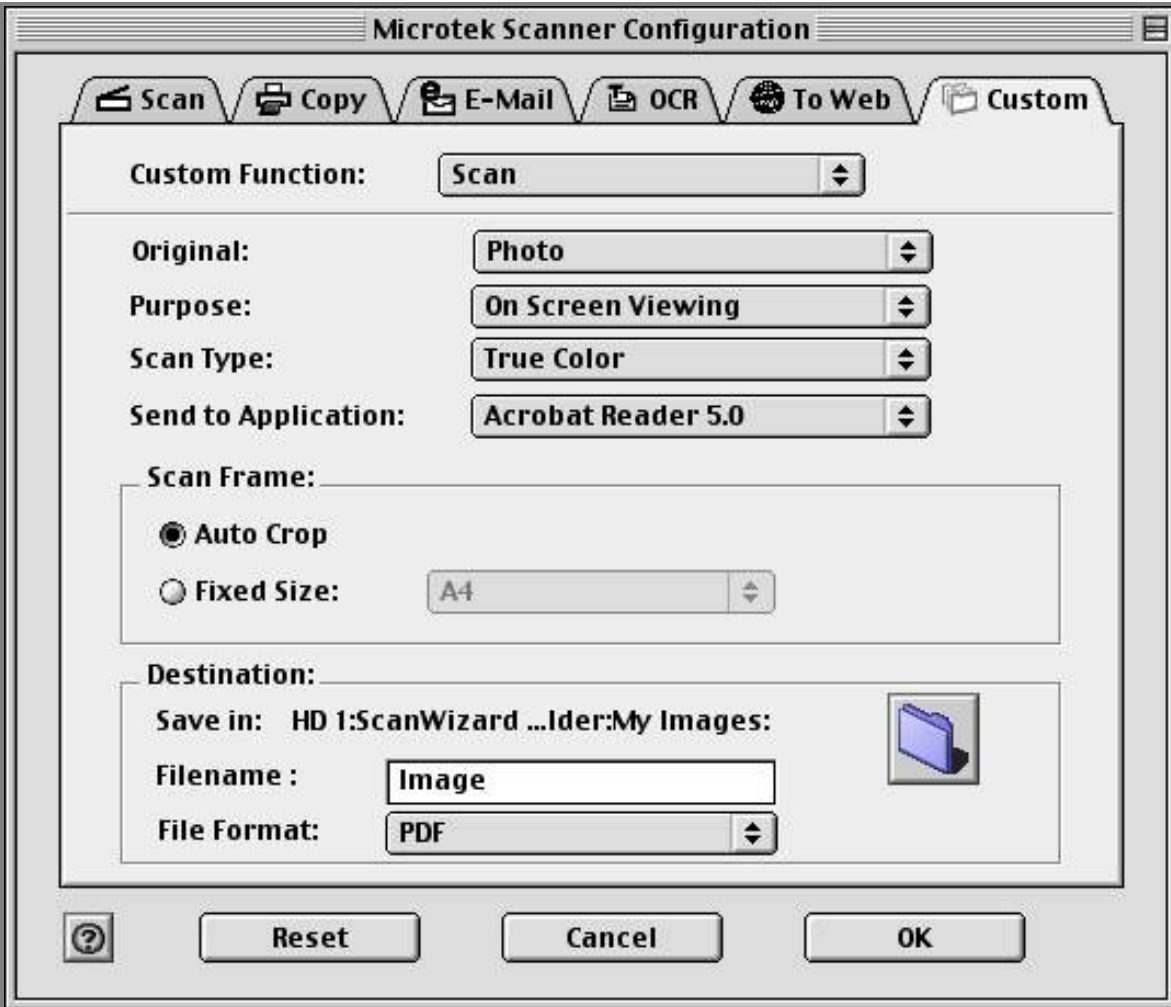
[OK button](#)

[Cancel button](#)

[Reset button](#)

[Help button](#)

Scan page



For more details, select the topic you wish to view from the links below:

[Original](#)

[Purpose](#)

[Scan Type](#)

[Send to Application](#)

[Scan Frame](#)

[Destination](#)

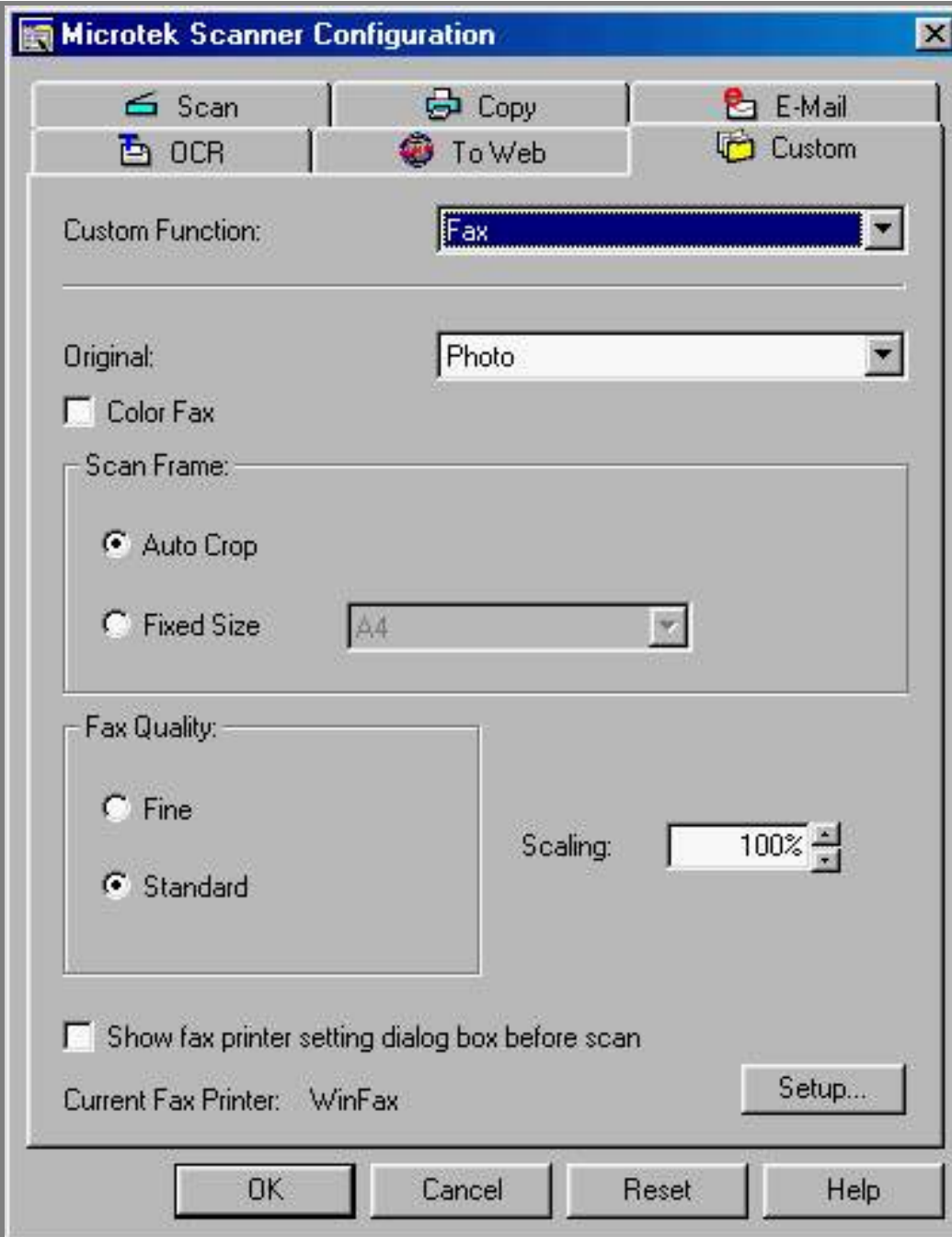
[OK button](#)

[Cancel button](#)

[Reset button](#)

[Help button](#)

Fax page



For more details, select the topic you wish to view from the links below:

[Original](#)

[Color Fax](#)

[Scan Frame](#)

[Fax Quality](#)

[Scaling](#)

[Show fax printer setting dialog box before scan](#)

[Setup button](#)

[OK button](#)

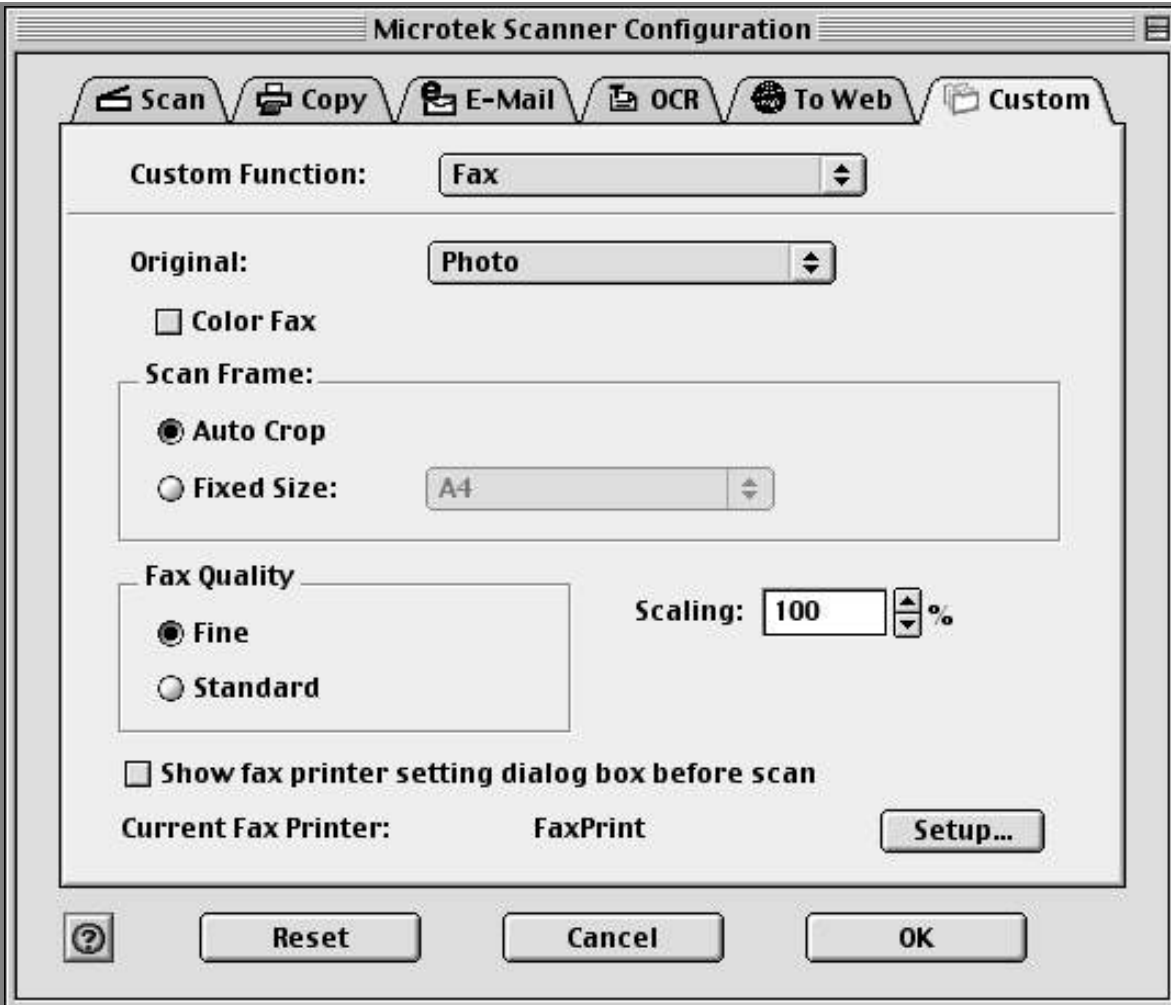
[Cancel button](#)

[Reset button](#)

[Help button](#)



Fax page



For more details, select the topic you wish to view from the links below:

[Original](#)

[Color Fax](#)

[Scan Frame](#)

[Fax Quality](#)

[Scaling](#)

[Show fax printer setting dialog box before scan](#)

[Setup button](#)

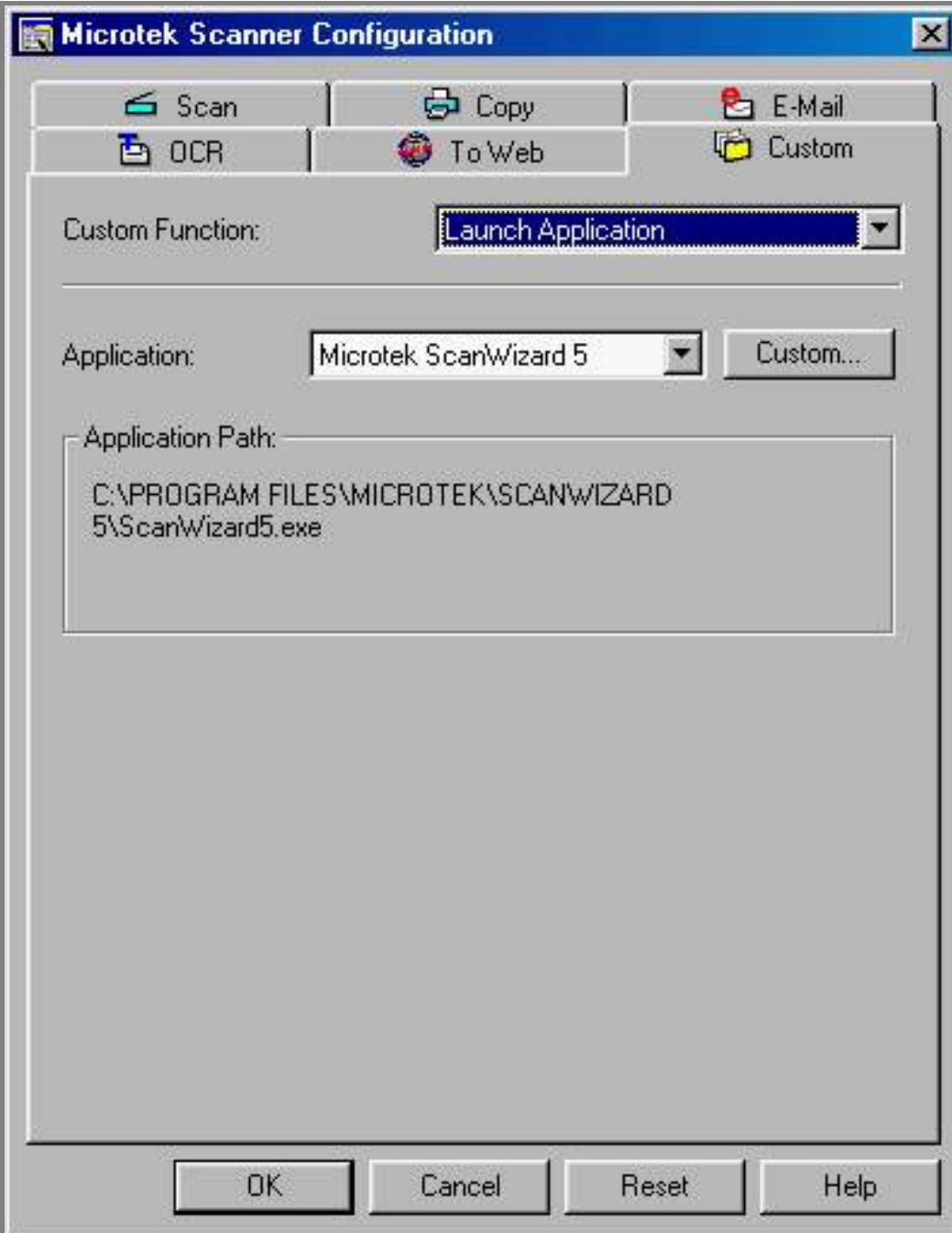
[OK button](#)

[Cancel button](#)

[Reset button](#)

[Help button](#)

Launch Application page



For more details, select the topic you wish to view from the links below:

[Application](#)

[Application Path](#)

[Custom button](#)

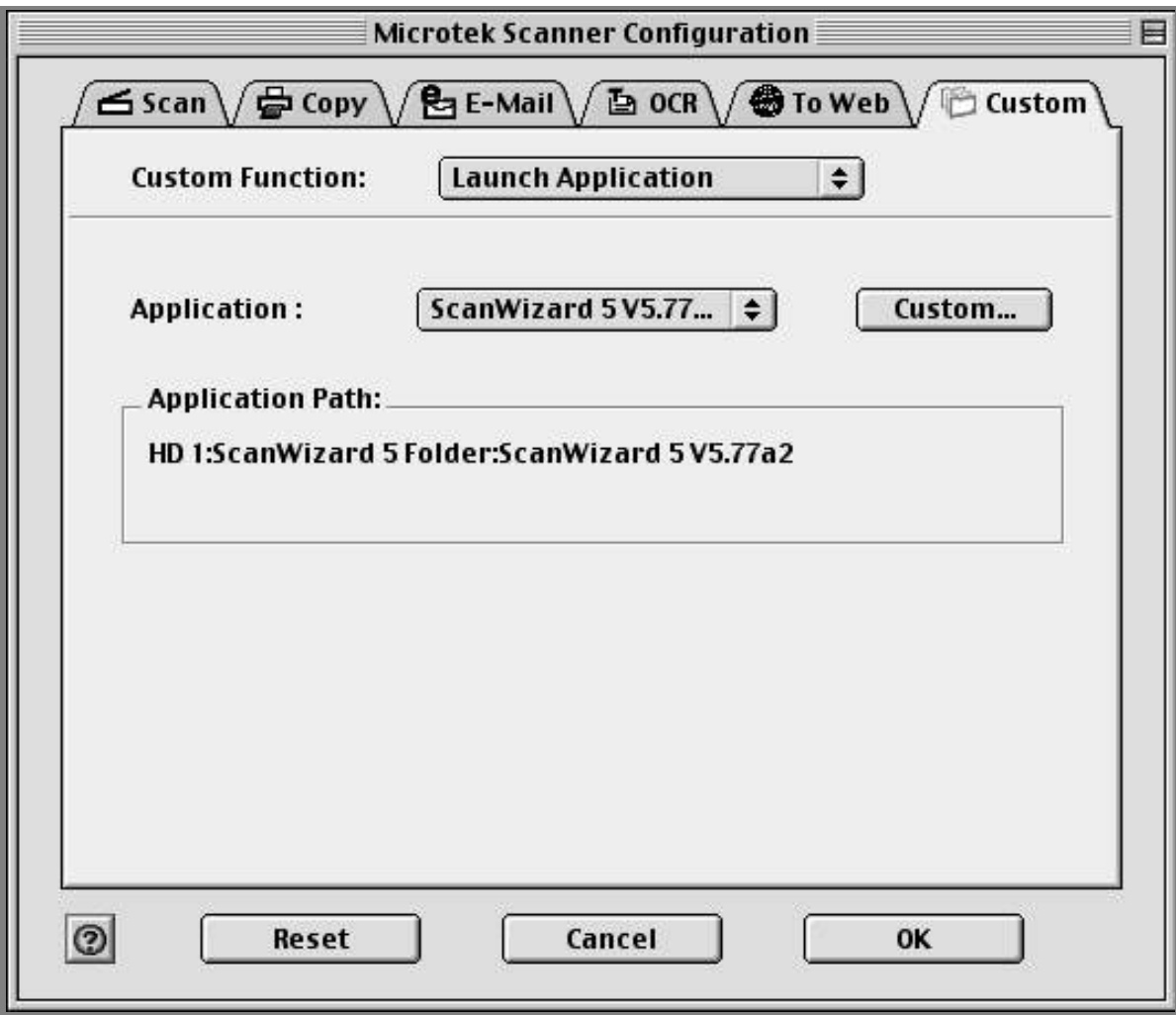
[OK button](#)

[Cancel button](#)

[Reset button](#)

[Help button](#)

Launch Application page



For more details, select the topic you wish to view from the links below:

[Application](#)

[Application Path](#)

[Custom button](#)



[OK button](#)

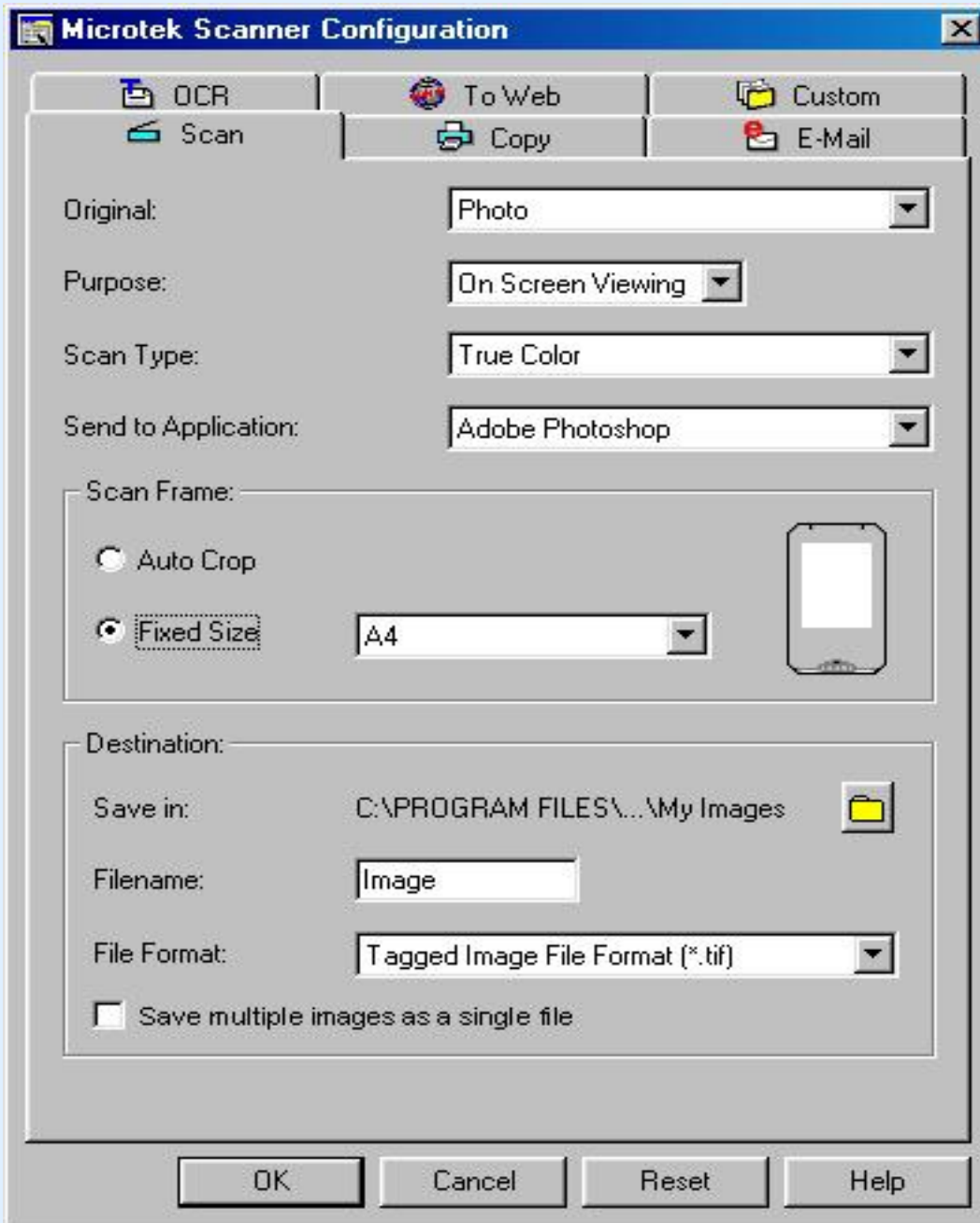
[Cancel button](#)

[Reset button](#)


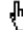
[Help button](#)

MSC panel

To obtain information for each panel configuration, position the arrow pointer  over any of the 6 tabs ([Scan](#), [Copy](#), [E-mail](#), [OCR](#), [To Web](#), or [Custom](#)), and then click the grabber pointer  to activate its associated panel.



MSC panel

To obtain information for each panel configuration, position the arrow pointer  over any of the 6 tabs ([Scan](#), [Copy](#), [E-mail](#), [OCR](#), [To Web](#), or [Custom](#)), and then click the grabber pointer  to activate its associated panel.

