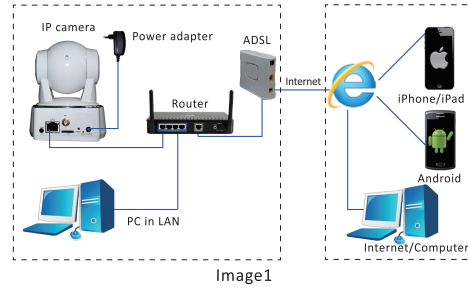




iSmartViewPro Product Quick Installation Guide

Tips:
This is Quick Guide, for more detailed instruction, please refer to the related user manuals.

Setup Diagram:



1. Get ready for camera, network cable and attached power adapter.
2. Connect your camera into Router's Ethernet LAN port.
3. Connect the power adapter into your camera.

Tips:

1. In order to avoid damage the camera, Please use the power adapter attached with camera.
2. There is Product ID and QR Code label at the bottom of each camera, as shown in image2.

IP Camera ID&QR Code label



iSmartViewPro Quick Installation Guide

1. Android Application
2. iPhone Application
3. LAN search Tool



1. Android Application



iSmartViewPro



Google Play



Android Market

Obtain Android App:

- Obtain iSmartViewPro from attached CD.
- Search and download iSmartViewPro in Google Play Store and Android Market.
- Scan QR Code to download it by smartphone.

Step 1: Download and install iSmartViewPro, and then launch it;

Step 2: Add DID number of the camera: There are 3 ways to add camera, manual adding/ scan QR Code/search in LAN.

☆The default username :admin, password:123456

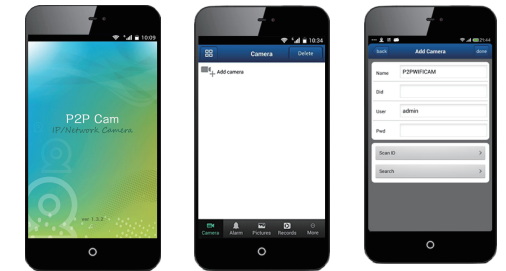


Image3

- ☆ Scan ID and search in LAN to Add as below.
- a) Search in LAN to Add
- b) Scan ID to Add



Search in LAN to Add



Scan ID to Add

Image4

- ☆ you can view the video after successfully add camera:

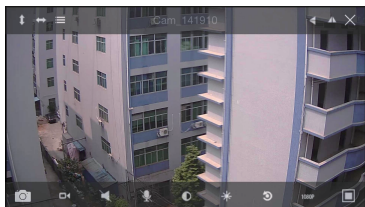


Image5

2. iPhone Application



iSmartViewPro



Scan it to download
iSmartViewPro

Obtain iPhone/iPad/iPod App:

- Search and download iSmartViewPro from APP Store.
- Scan QRCode to download it by mobile phone

Step 1: Download and install iSmartViewPro, and then launch it;

Step 2: Add DID number of the camera; There are 3 ways to add camera, manual adding/ scan QR Code/search in LAN.

☆The default username :admin, password:123456

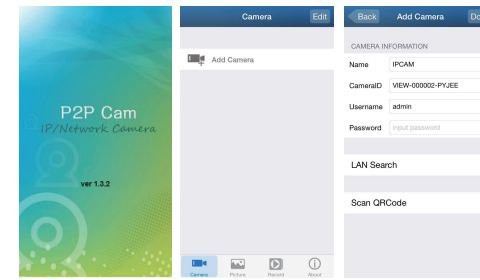
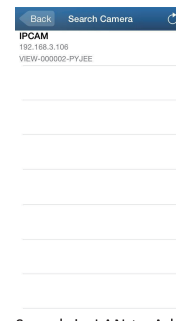


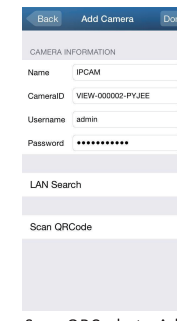
Image6

- ☆ Scan ID and search in LAN to Add as below.

- a) Search in LAN to Add
- b) Scan ID to Add



Search in LAN to Add



Scan QRCode to Add

Image7

- ☆ you can view the video after successfully add camera:

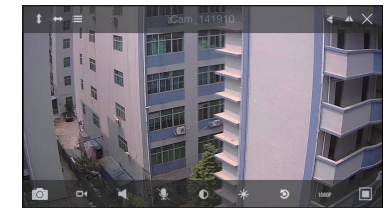


Image8

3. LAN search Tool

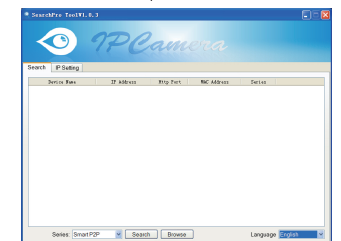
- a) Get <SearchPro> tool: you can find it in attached CD or download it in official website.

- b) User can search IP Camera in LAN by <SearchPro> tool, and view camera by browsers (such as IE, Google Chrome, Firefox, Safari).

☆Default username :admin, Password:123456



SearchPro



Remark: about the detailed operation steps for <SearchPro> tool, please refer to product user manual and CD introduction.