

IgniteFusion

Version 2.3
October 2002

Overview and Installation

IgniteFusion.....	1
Overview and Installation	1
IgniteFusion Server Overview	3
What is IgniteFusion	3
System Requirements.....	3
Installing IgniteFusion.....	4
Running IgniteFusion.....	5
Selecting Tray Icon Properties	6
Appendix A	9
Microsoft Internet Information Server (IIS) Installation.....	9
Step1: Open Console manager	9
Step 2: Select Properties.....	10
Step 3: Edit www service	10
Step 4: Home directory	11
Step 5: Configuration	12
Step 6: Application mapping.....	13
Step 7: Browse for ignitedb.....	14
Step 8: associate extension.....	15
Appendix B	17
Apache Installation.....	17
Installation	17
Appendix C	19
IPlanet / NetScape Installation	19
Step 1: Create file Association.....	19
Step 2: Installing Shell CGI Programs for Windows NT/2000.....	19
Step 3: Specifying a Shell CGI Directory (Windows NT/2000).....	20
Step 4: Specifying Shell CGI as a File Type (Windows NT/2000)	21
Appendix D	22
Microsoft Personal Web Server Installation (PWS)	22
Step 1: Register IgniteFusion extension.....	22
Step 2: Setup Microsoft Personal Web Server	23

IgniteFusion Server Overview

What is IgniteFusion

IgniteFusion is an XML based scripting language that is object-oriented. IgniteFusion is simple to use with easy syntax. IgniteFusion is similar to XML, ColdFusion, Mava. However IgniteFusion is object-oriented. This means you can define methods, use polymorphism, support encapsulation, create classes, and use inheritance, functions and classes.

IgniteFusion is a shareware product, unregistered versions of IgniteFusion are **fully functional and do not have any time limitation**. However unregistered version do have a small logo displayed on each page.

The full registered version of IgniteFusion contains:

- No default logo at bottom of each page
- Technical support (online and email)
- Free upgrades for 2 years

System Requirements

IgniteFusion can run on almost any MS Windows system, the following is a list of hardware and software needed to run IgniteFusion.

- Pentium processor or equivalent 2.Windows 98/NT/2000/XP
- Internet Web Server (example: IIS, Apache, iPlanet)
- At least 32 MB of RAM
- At least 2 MB of disk space

Installing IgniteFusion

IgniteFusion is a CGI program like many scripting Languages (ColdFusion, Perl,PHP, Python, Mava, etc.). What this means is that IgniteFusion is an executable file that needs to be mapped to the Web Server. Once you have downloaded IgniteFusion (IgniteDB.exe) place it in you script directory or bin directory on the hard drive. Follow the steps for your particular server described in the Appendix of this document . There are examples for Microsoft IIS, Apache, and iPlanet/Netscape but the process is the same for most web servers.

In order for IgniteFusion to work properly the IgniteFusion tray application “ignui.exe” must be running.

You can download IgniteFusion at <http://www.IgniteFusion.com/download.htm> The download is a winzip file. The zip package contains 6 main files:

- ignitedb.exe - script engine executable
- ignui.exe - script tray icon (must run on start up)
- readme.doc – overview and installation (this document)
- ir_ref.pdf - IgniteFusion script language reference guide
- license.txt – legal stuff
- sample.ign - an sample script page

Follow the instruction to map the web server file extension to ignitedb.exe. These instructions are found at <http://www.ignitefusion.com/install.htm>

Running IgniteFusion

Once the mapping has been completed you need to run the IgniteFusion Server application. The file “ignui.exe” by double click. Upon executing the file, you will see the following splash screen.



The splash screen means that the application has been successfully started. You will also see an icon of a “closed fist” on the taskbar.



To view options for IgniteFusion Server application, right click on the taskbar icon. The pop up menu contains the following choices: Properties, About, Register Online, Set Registration Key and Exit.



Selecting Tray Icon Properties

Once you have selected the “Properties” from the menu the following dialog box will open. The properties dialog box has the following options: Auto startup, Register Online, www.ignitefusion.com, and close.



“Auto Startup” is a check box. Check this box in order to have IgniteFusion Server Application start up automatically when the server is restarted.

“Register Online (click here)” is a text button. This button will open a web page that will allow you to sign up and get a registration key. The registration key can be used for the Menu Option “Set Registration Key”.

www.ignitefusion.com is a text button that will open a web page to the IgniteFusion website.

To close the properties dialog box click the green X at the top right corner.

Selecting **About**

Once you have selected “About” from the menu the following dialog box will open. To close the “About” dialog box click the green X at the top right corner.

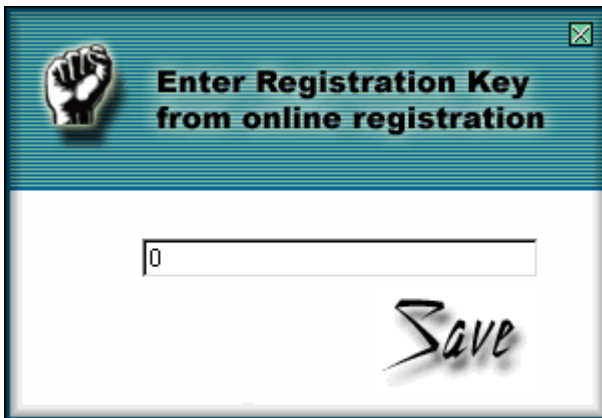


Selecting **Register Online**

Once you have selected “Register Online” from the menu your default web browser will open to the IgniteFusion registration website. Enter the requested information in the website and receive the registration key for IgniteFusion. Copy this key.

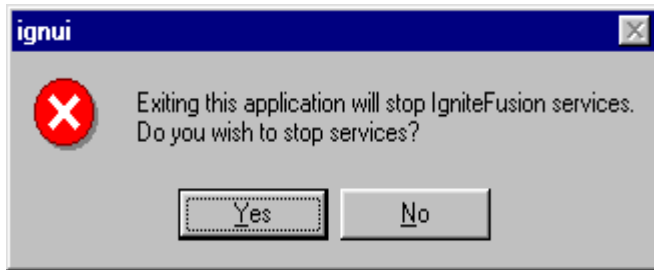
Selecting **Set Registration Key**

Once you have selected “Set Registration Key” from the menu the following dialog box will open. Type the registration key, which you received via “Register Online”, in the text box. Then click the text that says “Save” to save the key into the IgniteFusion Application.



Selecting **Exit**

Once you have selected the “Exit” from the menu the following dialog box will open. This is a confirmation dialog box which asks “do you wish to stop services?”. If you answer “yes” the application server will stop will no longer be running on your system and if you answer “no” the application continues to run.



Appendix A

IgniteFusion is a CGI program like many scripting Languages (Perl,PHP, Python, etc.). What this means is that IgniteFusion is an executable file that needs to be mapped to the Web Server. Once you have downloaded IgniteFusion, place the file "IgniteDB.exe" in your script directory or bin directory on the hard drive. Follow the steps of the menu on the left to see how to map IgniteFusion to your web server. The server that IgniteFusion is compatible is IIS, Apache, and iPlanet.

Microsoft Internet Information Server (IIS) Installation

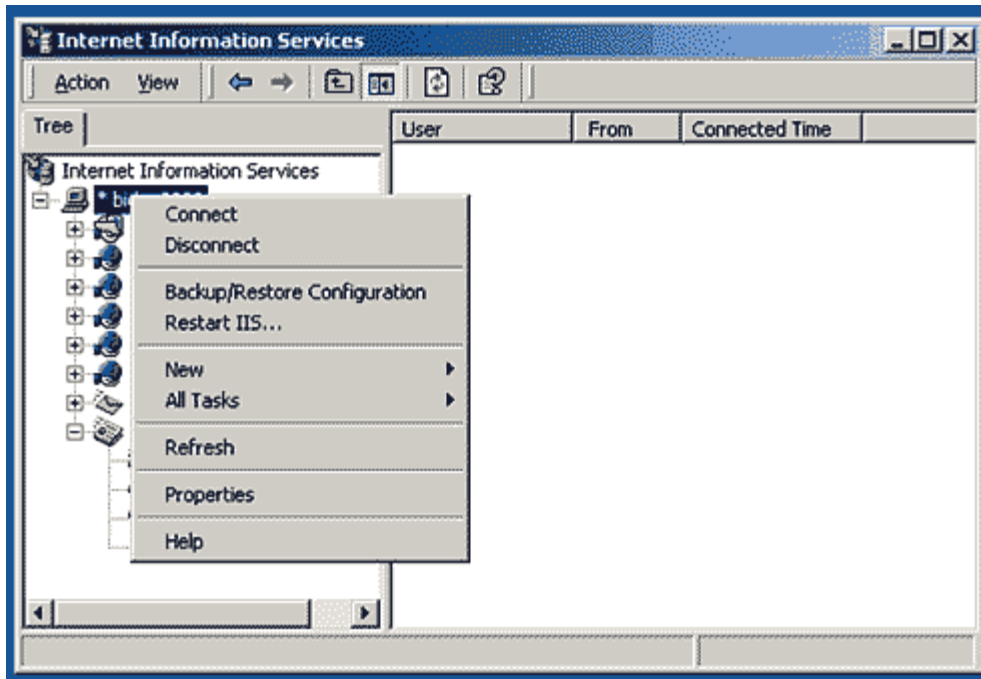
Microsoft Internet Information Server (IIS) is the standard web server that comes with Microsoft Windows NT/2000 systems. The following steps describe how to install IgniteFusion as a script engine for IIS. These steps guide you through the IIS Graphical User Interface known as the "Internet Services Manager" it also referred to as the "IIS Console Manager".

Step1: Open Console manager

Once you have downloaded the IgniteFusion executable (called "IgniteDB.exe") place it in you script directory or bin directory on your hard drive. This directory is usually called "c:\InetPub\wwwroot\scripts".

Note: If you are using Windows NT/2000, make sure to enable security so that all users have the right to execute/run the IgniteFusion executable ("Ignitedb.exe").

Open your IIS console manager and select the icon of the web server you wish to configure for IgniteFusion and click on the right mouse button. This should display a menu as shown in the picture below.

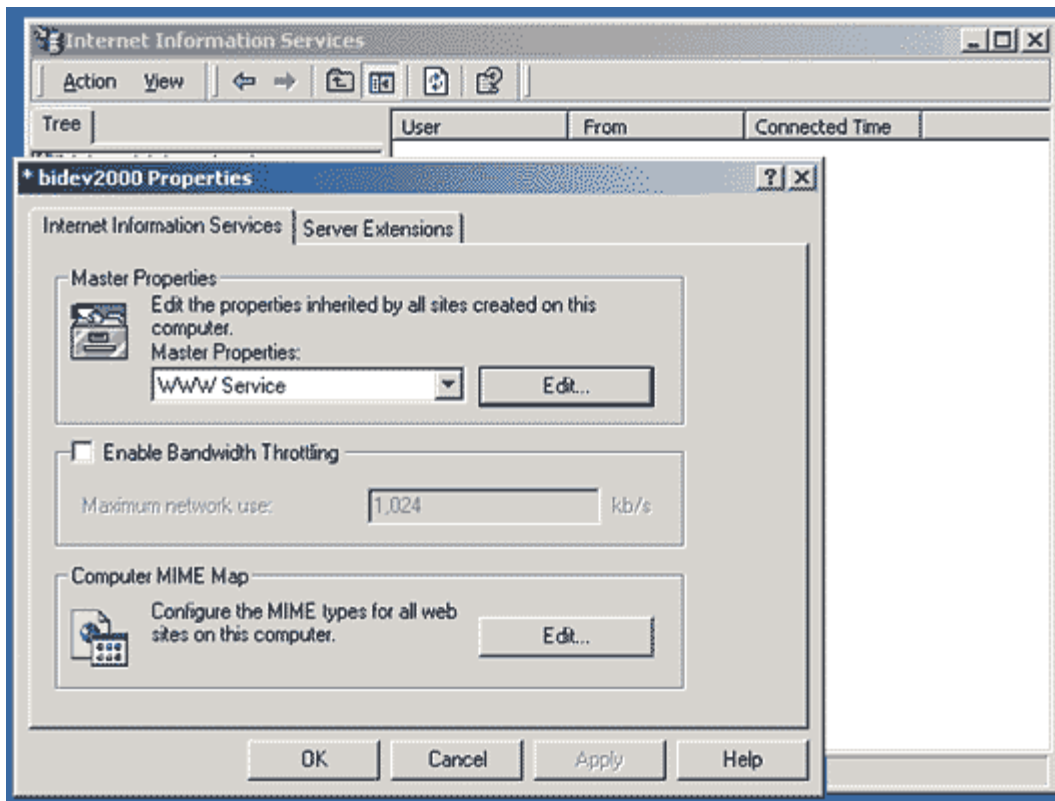


Step 2: Select Properties

From the selected website menu, select the "Properties" menu option by using the left mouse click.

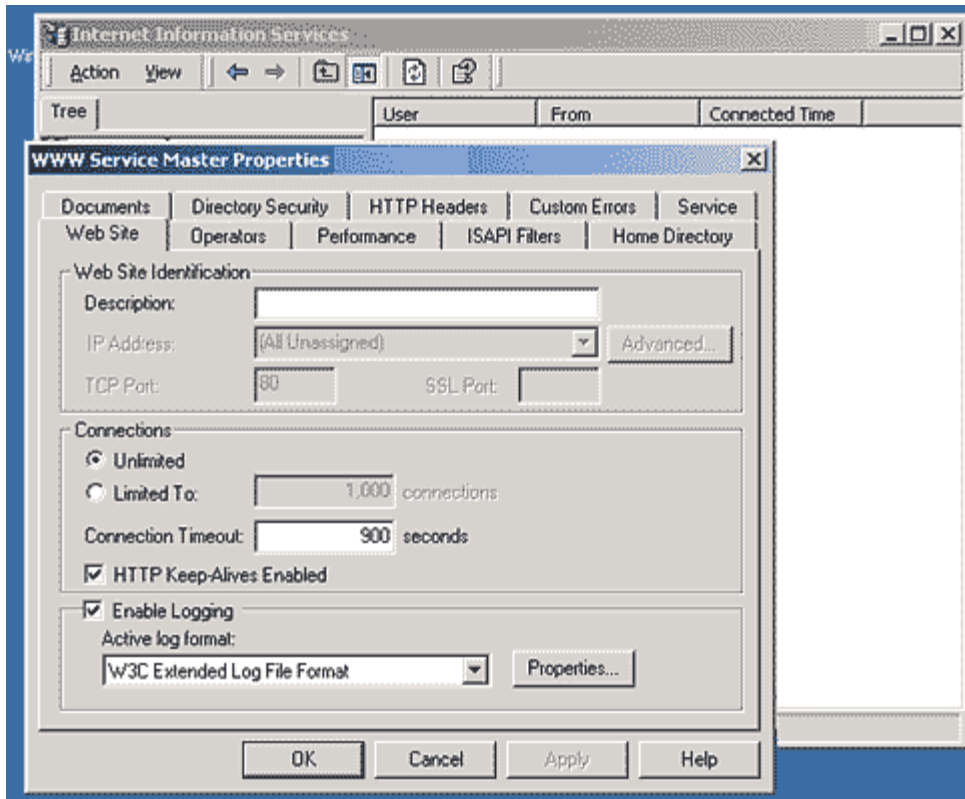
Step 3: Edit www service

After selecting the "Properties" option from the popup menu, the "Master Properties" dialog box for the chosen website will open up. In the "Master Properties" group make sure the "WWW Service" list box option is chosen and then chose the "Edit" button. A properties dialog box should then display.



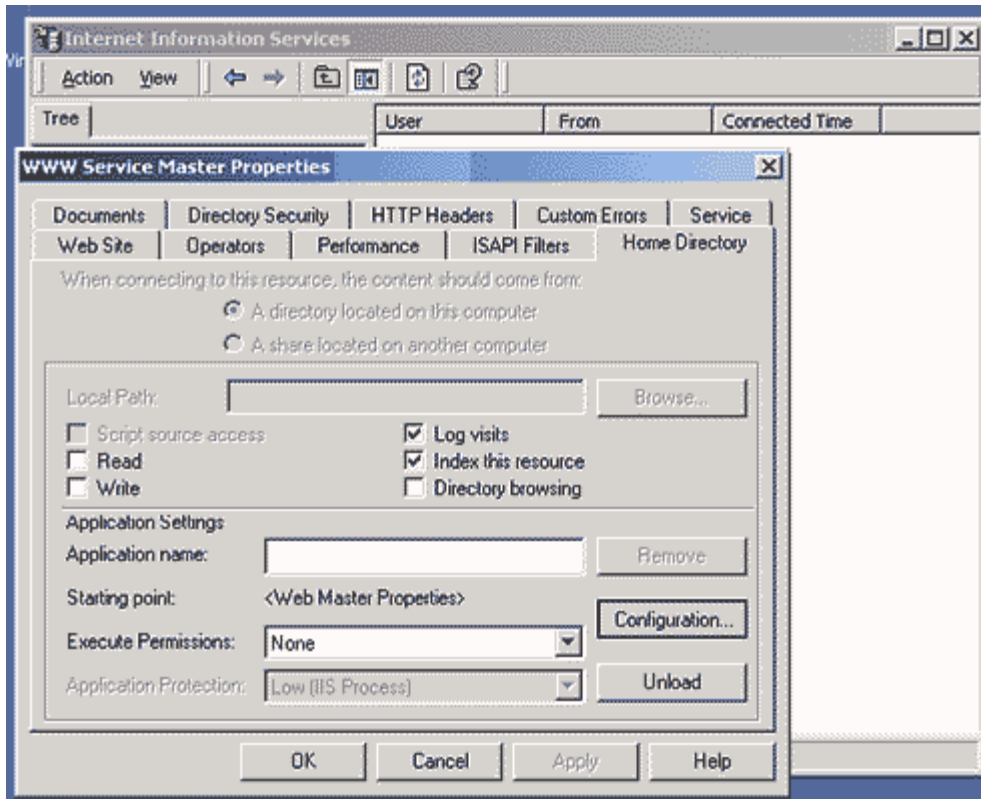
Step 4: Home directory

The properties button has a number of different tabs to choose from. Now select "Home Directory" tab.



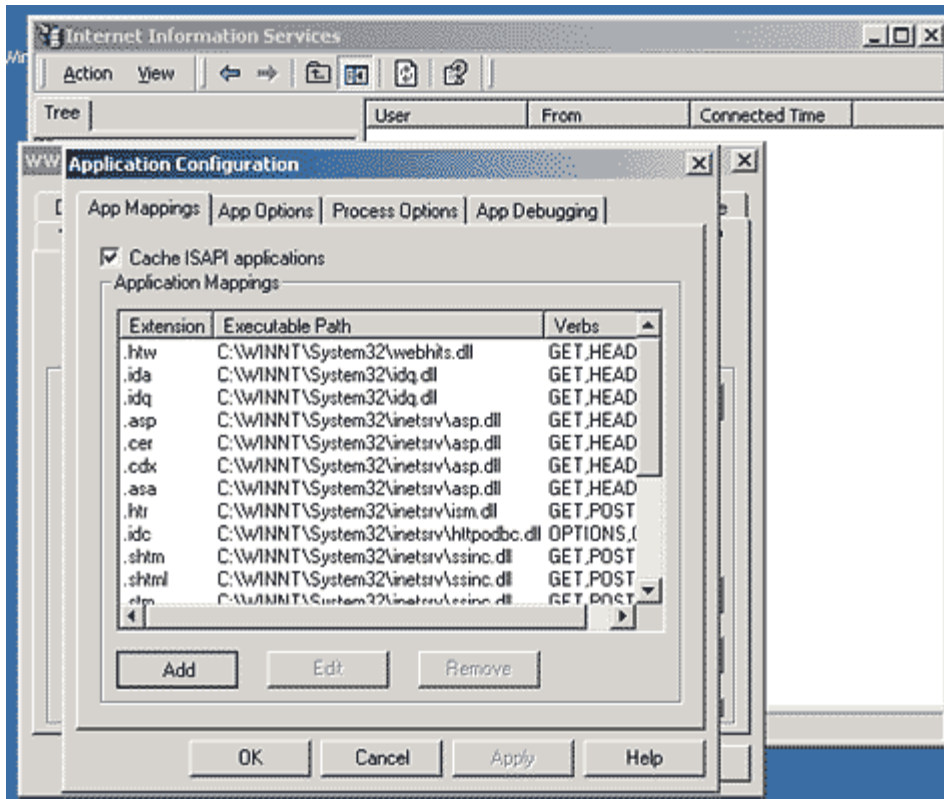
Step 5: Configuration

In the "Home Directory" tab, click the "Configuration" button. This button is located towards the bottom right of the dialog box. When you click this button a new dialog box called "Application Configuration" will open up.



Step 6: Application mapping

In the "Application Configuration" dialog box, select the tab called "App Mappings". This will show a list box that has all the different file extensions that are defined for the web server. In order to setup IgniteFusion a file extension must be associated to the IgniteFusion executable. Click on the "Add" button at the bottom of the dialog box. Once you click the "Add" button, the "Add/Edit Application Extension Mapping" dialog box will popup.



Step 7: Browse for ignitedb

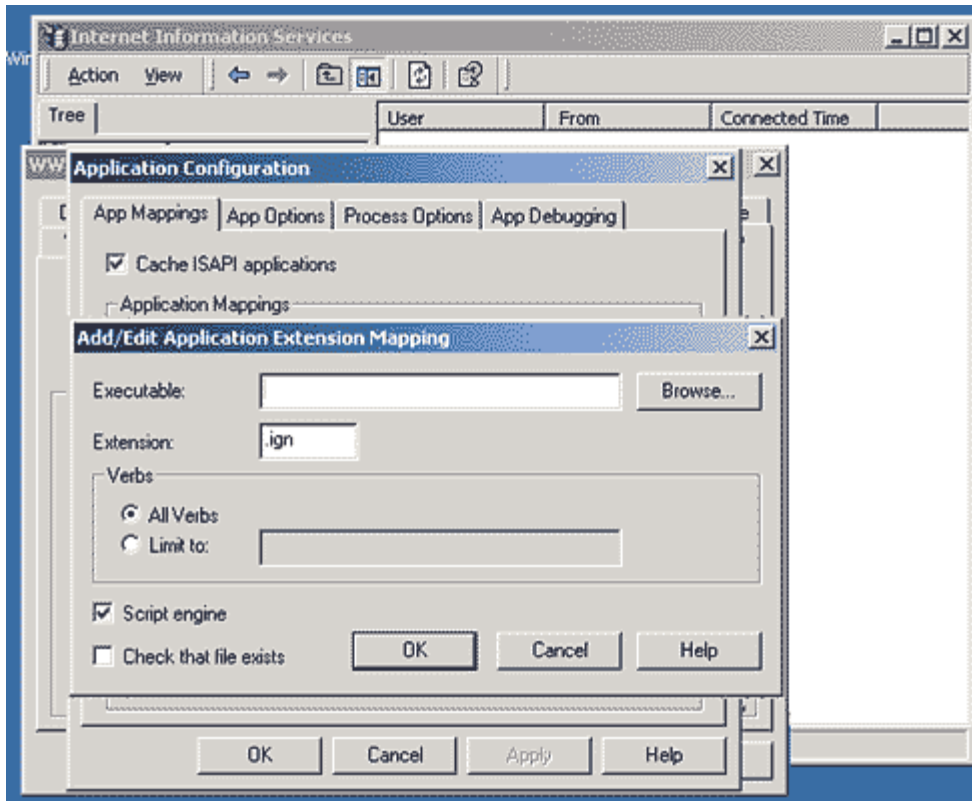
Use the "Browse" button and search for the IgniteFusion executable file that was downloaded and placed in the script directory (usually "c:\InetPub\wwwroot\scripts").

Once the file is selected click the on "open" button.

Next enter the file extension ".ign". This will associate all files with a ".ign" extension to IgniteFusion. If you wish to be able to execute IgniteFusion tags inside HTML files you may enter a ".htm" entry here.

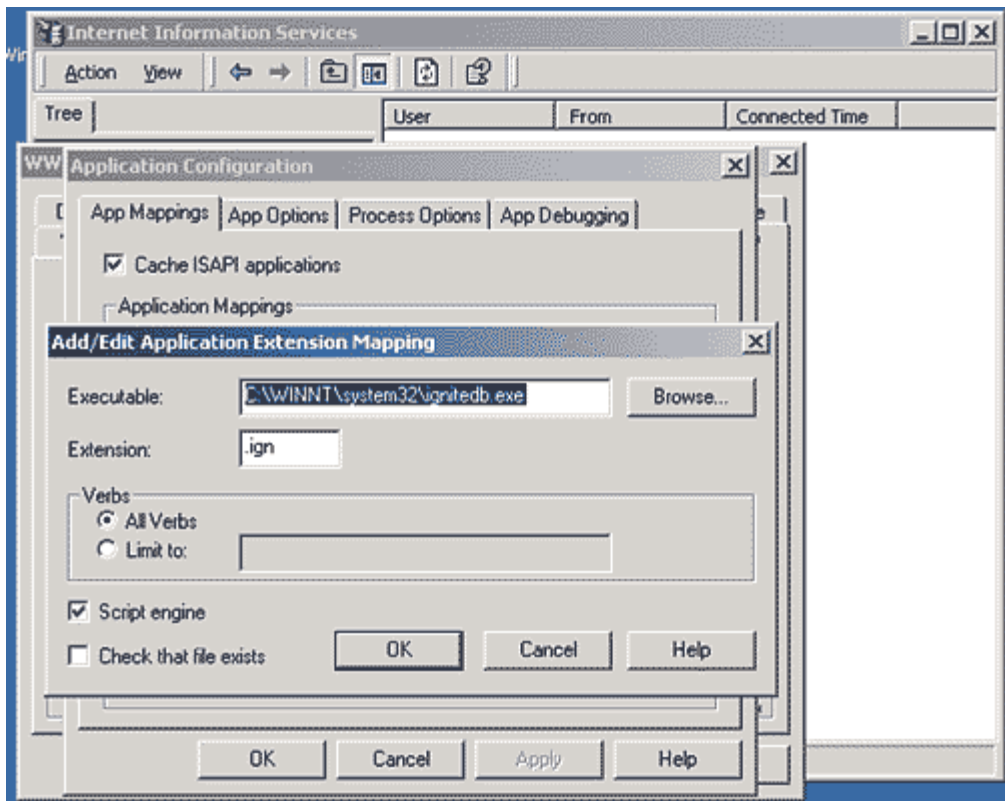
Note: You can associate any extension.

Select the Script Engine check box. If left unchecked you will be required to give the file executable rights to the file.



Step 8: associate extension

Once all of the options are filled, the dialog box should look like this. Click the "OK" button until all the dialog boxes are closed.



Appendix B

Apache Installation

Configuring Apache to run CGI programs such as IgniteFusion is fairly straightforward. Once you have downloaded the IgniteFusion executable (called "Ignitedb.exe") place it in your script directory or bin directory on your hard drive. This directory is usually called "c:\Apache\cgi-bin".

Apache is controlled by a series of configuration files: "httpd.conf", "access.conf" and "srm.conf". These files contain instructions called directives that control Apache's behavior.

In the following steps all configuration should be made to the respective config files for Apache however some installations include all directives in the "httpd.conf" file. In this case all changes should be added to the "httpd.conf" file.

In standard installations the Apache server is located in the "c:\Apache" directory. If you use a different root directory you must change the absolute paths described.

Note: If you are using Windows NT/2000, make sure to enable security so that all users have the right to execute/run the IgniteFusion executable ("Ignitedb.exe").

Installation

We assume that: Apache server is located in the usual "c:\Apache" directory. Ignite scripts have .ign extension

Edit the Apache access.conf config file, located in SERVER_ROOT/conf/ . (httpd.conf if Apache version 1.3.5 or up)

Check the cgi-bin directory config. It must have the ExecCGI directive :

```
<Directory "C:/Apache/cgi-bin">  
    AllowOverride None  
    Options ExecCGI  
</Directory>
```

Edit the Apache srm.conf config file, located in SERVER_ROOT/conf/

Check for or add the directive that will declare your cgi-bin directory:

```
ScriptAlias /cgi-bin/ "C:/Apache/cgi-bin/"
```

Add the directive to declare the MIME-Type for the ign files. The format is AddType [mime-type] [file extension]

```
AddType application/x-httpd-ignitedb .ign
```

Add the directive that will bind the IgniteDb.exe program with the ignite mime-type.

```
Action application/x-httpd-ignitedb "/cgi-bin/igintedb.exe"
```

The previous directives will allow simplified urls , ie. <http://server/directory/hello.ign> instead of <http://server/cgi-bin/igintedb.exe/directory/hello.ign>

Save the configs files, and restart Apache.

Appendix C

IPlanet / NetScape Installation

Step 1: Create file Association

1. Open windows Explorer
2. From the "Tools", select "Folder options..."
3. In the Options dialog box, select the File Types tab.
4. Click the New Type button. The Add New File Type dialog box appears.
5. In the "Description of type" box, type "IgniteFusion Script".
6. In the "Associated extension" box, type ".ign".
7. Leave the Content Type (MIME) box blank.
8. Click the New button beneath the Actions list. The New Action dialog box will appear.
9. In the Action box, type "Open" (it's important to use this name for the action!).
10. In the "Application used to perform action" box, type [full path to ignitedb]\igintedb.exe, where [full path to ignitedb] is the full path to ignitedb.exe on your machine. Also you can use the "Browse" button to locate ignitedb.exe on the server.
11. Click OK to close the New Action dialog box.
12. Click OK to close the Add New File Type dialog box.
13. Click OK to close the Options dialog box.

You can test your association by double-clicking on a IgniteFusion script in the Explorer window. If ignitedb.exe starts and executes the script, the association is made.

Step 2: Installing Shell CGI Programs for Windows NT/2000

This section discusses how to install Shell CGI Programs for Windows NT. The following topics are included in this section:

Shell CGI is a server configuration that lets you run CGI applications using the file associations set in Windows NT.

For example, if the server gets a request for a shell CGI file called hello.ign, the server uses the Windows NT file associations to run the file using the program associated with the .ign extension. If the .ign extension is associated with the program C:\bin\ignitedb.exe, the server attempts to execute the hello.ign file as follows:

```
c:\bin\ignitedb.exe hello.ign
```

The easiest way to configure shell CGI is to create a directory in your server's document root that contains only shell CGI files. However, you can also configure the server to associate specific file extensions with shell CGI by editing MIME types from the iPlanet Web Server.

Step 3: Specifying a Shell CGI Directory (Windows NT/2000)

To create a directory for your shell CGI files, perform the following steps:

Create the shell directory on your computer. This directory doesn't have to be a subdirectory of your document root directory.

From the Server Manager, choose the Class Manager tab.

Next, choose the Programs tab.

The shell CGI Directory link is highlighted and the CGI window appears.

In the URL Prefix field, enter the URL prefix you want to associate with your shell CGI directory.

For example, suppose you store all shell CGI files in a directory called C:/docs/programs/cgi/shell-cgi, but you want users to see the directory as http://www.yourserver.com/shell/. In this case, you would type shell as the URL prefix.

In the Shell CGI Directory field, enter the absolute path to the directory you created.

Caution: The server must have read and execute permissions to this directory. For Windows NT, the user account the server runs as (for example, LocalSystem) must have rights to read and execute programs in the shell CGI directory.

Note: Make sure that any files in the shell CGI directory also have file associations set in Windows NT. The server returns an error if it attempts to run a file that has no file-extension association.

Step 4: Specifying Shell CGI as a File Type (Windows NT/2000)

You can use the iPlanet Web Server's MIME Types window to associate a file extension with the shell CGI feature. This is different from creating an association in Windows NT.

To associate a file extension with the shell CGI feature in the server, for example, you can create an association for files with the .ign extension. When the server gets a request for a file with that extension, the server knows to treat the file as a shell CGI file by calling the executable associated in Windows NT with that file extension.

To associate a file extension as a shell CGI file, perform the following steps:

Create the shell directory on your computer. This directory doesn't have to be a subdirectory of your document root directory.

From the Server Manager, choose Server Preferences.

Click the MIME Types link.

The Global MIME Types window appears. For more information on the Global MIME Types, see Choosing MIME Types.

Add a new MIME type with these settings:

Type: type

Content type: magnus-internal/shellcgi.

File Suffix: Enter the file suffixes that you want the server to associate with shell CGI. If you activated CGI, WinCGI, and shell CGI file types, you must specify a different suffix for each type of CGI. For example, you can't use the suffix .exe for both a CGI program and a shell CGI program. If you need to, you can edit the other MIME type fields on the page so that the suffixes are unique.

Click the New Type button.

Save and apply your changes.

Appendix D

Microsoft Personal Web Server Installation (PWS)

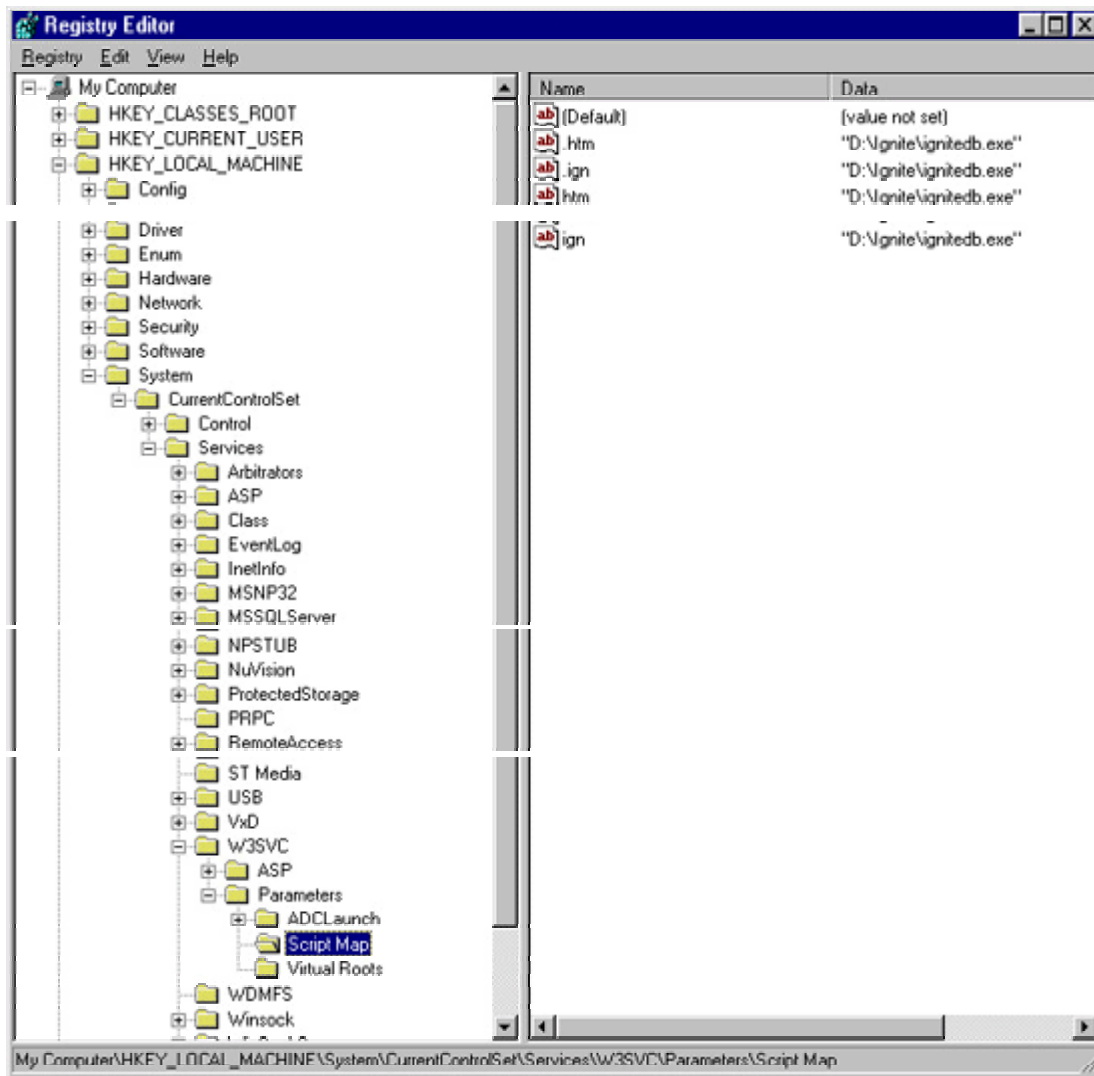
Microsoft Personal Web Server (PWS) it is not intended to be used in a production environment. However, it is perfect for use on your own computer, where it allows you to test your scripts before uploading to your production server or Internet Service Provider (ISP).

Microsoft PWS is available for free from Microsoft and can be run on Windows 95/98/NT systems. You can get PWS from the Windows 98 CD that includes it or you can download it from the Microsoft web site.

Once you have downloaded the IgniteFusion executable (called "Ignitedb.exe") place it in you script directory or bin directory on your hard drive. This directory is usually called "c:\InetPub\wwwroot\scripts".

Step 1: Register IgniteFusion extension

- Open windows registry program (regedit.exe)
- On the "Start" Menu click "Run"
- In the "Open" edit box, type "regedit.exe" and click "OK".
- Open the Key to
"HKEY_LOCAL_MACHINE\System\CurrentControlSet\Services\W3SVC\Parameters\Script Map"
- Select the "Edit" menu and choose "New/String Value" sub-menus
- Add a new string value by entering ".ign"
- Double click on the new key
- In the "Value Data" edit box enter the full path to the IgniteFusion



Step 2: Setup Microsoft Personal Web Server

Run Microsoft Personal Web Server "pws.exe".

- Click "Advanced".
- Select <Home>.
- Click "Add".
- In the Directory edit box, type the path to the directory where you want the your script files to be located. For example: "c:\inetpub\wwwroot\scripts"
- In the "Alias" edit box, type the name of the virtual directory you want to use. For example IgniteFusion.
- Click to select "Read", "Execute" and "Scripts" options.
- Click "OK".

If prompted to create new folder then click "OK".

On the Properties menu click "Exit".